

## Структурные модели среды

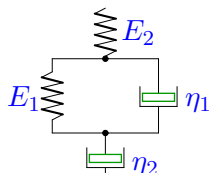
Вывести определяющее уравнение среды.

Модули упругости и коэффициенты вязкости даны в безразмерном виде. В ответах приведены коэффициенты уравнения

$$A_2\ddot{\sigma} + A_1\dot{\sigma} + A_0\sigma = B_2\ddot{\epsilon} + B_1\dot{\epsilon} + B_0\epsilon.$$

**Задача 2.1.**

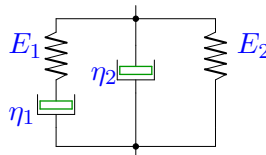
*Бабченко Аким*



$$E_1 = 2, E_2 = 3, \eta_1 = 2, \eta_2 = 1.$$

**Задача 2.2.**

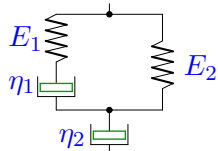
*Баннов Иван*



$$E_1 = 1, E_2 = 2, \eta_1 = 1, \eta_2 = 2.$$

**Задача 2.3.**

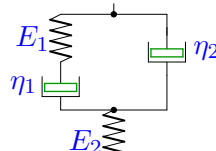
*Баранов Егор*



$$E_1 = 2, E_2 = 3, \eta_1 = 1, \eta_2 = 4.$$

**Задача 2.4.**

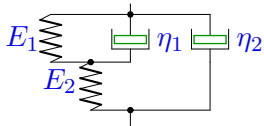
*Батуро Кирилл*



$$E_1 = 2, E_2 = 3, \eta_1 = 2, \eta_2 = 4.$$

**Задача 2.5.**

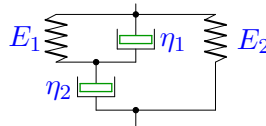
*Брыксина Кристина*



$$E_1 = 2, E_2 = 3, \eta_1 = 2, \eta_2 = 4.$$

**Задача 2.6.**

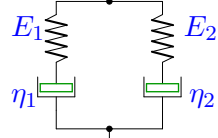
*Воронин Ярослав*



$$E_1 = 2, E_2 = 3, \eta_1 = 2, \eta_2 = 4.$$

**Задача 2.7.**

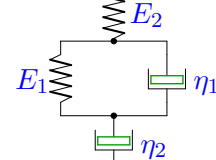
*Гричанюк Елена*



$$E_1 = 2, E_2 = 3, \eta_1 = 1, \eta_2 = 4.$$

**Задача 2.8.**

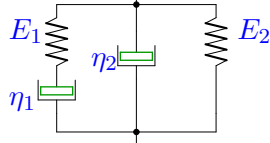
*Карасев Иван*



$$E_1 = 1, E_2 = 3, \eta_1 = 2, \eta_2 = 1.$$

**Задача 2.9.**

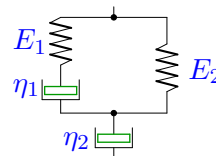
*Макарова Ирина*



$$E_1 = 1, E_2 = 3, \eta_1 = 2, \eta_2 = 1.$$

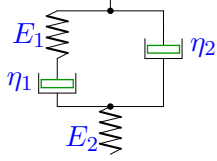
**Задача 2.10.**

*Мальсагов Аланбек*



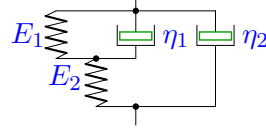
$$E_1 = 1, E_2 = 3, \eta_1 = 1, \eta_2 = 2.$$

**Задача 2.11.** Мартыненко Александр



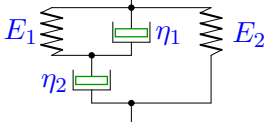
$$E_1 = 2, E_2 = 1, \eta_1 = 1, \eta_2 = 2.$$

**Задача 2.12.** Пономарев Александр



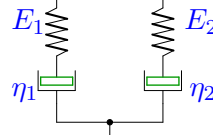
$$E_1 = 1, E_2 = 3, \eta_1 = 1, \eta_2 = 2.$$

**Задача 2.13.** Романков Николай



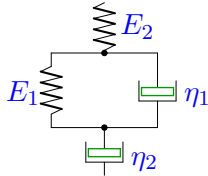
$$E_1 = 2, E_2 = 1, \eta_1 = 2, \eta_2 = 1.$$

**Задача 2.14.** Семенов Александр



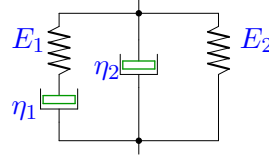
$$E_1 = 2, E_2 = 1, \eta_1 = 2, \eta_2 = 4.$$

**Задача 2.15.** Слепцов Вадим



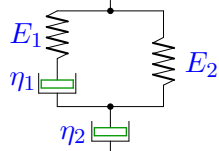
$$E_1 = 1, E_2 = 3, \eta_1 = 2, \eta_2 = 4.$$

**Задача 2.16.** Сюржев Андрей



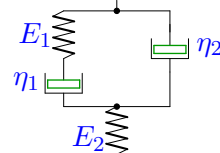
$$E_1 = 2, E_2 = 3, \eta_1 = 2, \eta_2 = 4.$$

**Задача 2.17.** Чембилеев Данил



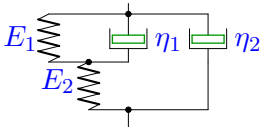
$$E_1 = 1, E_2 = 3, \eta_1 = 2, \eta_2 = 1.$$

**Задача 2.18.** Юферов Андрей



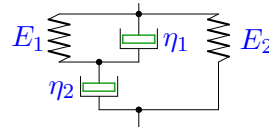
$$E_1 = 1, E_2 = 3, \eta_1 = 2, \eta_2 = 1.$$

**Задача 2.19.** Верещагина Елизавета

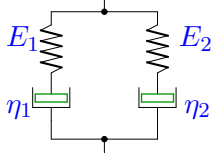


$$E_1 = 2, E_2 = 1, \eta_1 = 1, \eta_2 = 4.$$

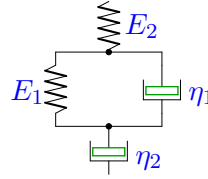
**Задача 2.20.** Вычужина Злата



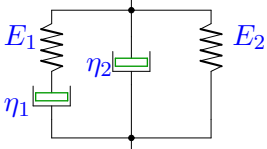
$$E_1 = 1, E_2 = 2, \eta_1 = 1, \eta_2 = 2.$$

**Задача 2.21.***Галеев Максим*

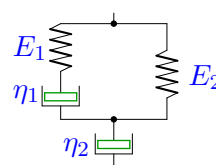
$$E_1 = 2, E_2 = 3, \eta_1 = 2, \eta_2 = 1.$$

**Задача 2.22.***Гусев Олег*

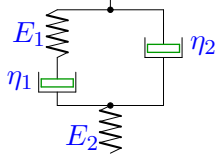
$$E_1 = 1, E_2 = 3, \eta_1 = 2, \eta_2 = 1.$$

**Задача 2.23.***Ивкин Даниил*

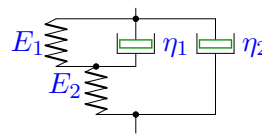
$$E_1 = 1, E_2 = 2, \eta_1 = 1, \eta_2 = 4.$$

**Задача 2.24.***Корнев Никита*

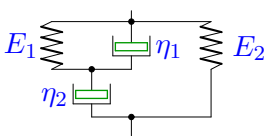
$$E_1 = 2, E_2 = 3, \eta_1 = 2, \eta_2 = 1.$$

**Задача 2.25.***Корочкин Дмитрий*

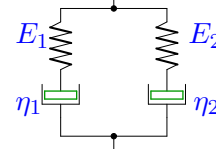
$$E_1 = 2, E_2 = 3, \eta_1 = 2, \eta_2 = 4.$$

**Задача 2.26.***Ларионов Николай*

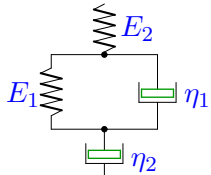
$$E_1 = 1, E_2 = 3, \eta_1 = 1, \eta_2 = 2.$$

**Задача 2.27.***Максимов Михаил*

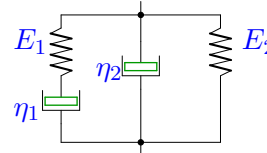
$$E_1 = 1, E_2 = 3, \eta_1 = 1, \eta_2 = 2.$$

**Задача 2.28.***Мальков Дмитрий*

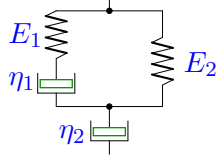
$$E_1 = 1, E_2 = 2, \eta_1 = 2, \eta_2 = 4.$$

**Задача 2.29.***Манукало Арсений*

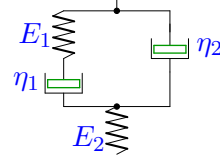
$$E_1 = 1, E_2 = 3, \eta_1 = 1, \eta_2 = 2.$$

**Задача 2.30.***Моторин Кирилл*

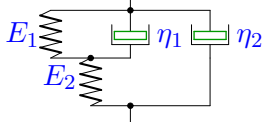
$$E_1 = 2, E_2 = 3, \eta_1 = 1, \eta_2 = 4.$$

**Задача 2.31.***Панькин Александр*

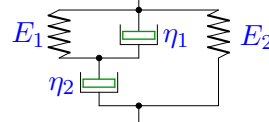
$$E_1 = 1, E_2 = 2, \eta_1 = 1, \eta_2 = 2.$$

**Задача 2.32.***Райков Александр*

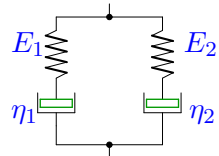
$$E_1 = 2, E_2 = 3, \eta_1 = 1, \eta_2 = 4.$$

**Задача 2.33.***Ревюк Всеволод*

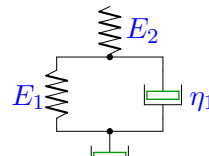
$$E_1 = 2, E_2 = 3, \eta_1 = 1, \eta_2 = 4.$$

**Задача 2.34.***Ринчинова Сэлмэг*

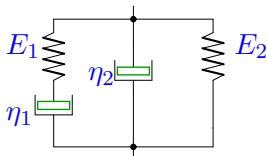
$$E_1 = 1, E_2 = 3, \eta_1 = 1, \eta_2 = 2.$$

**Задача 2.35.***Савина Мария*

$$E_1 = 1, E_2 = 3, \eta_1 = 1, \eta_2 = 4.$$

**Задача 2.36.***Черниговская*

$$E_1 = 2, E_2 = 1, \eta_1 = 1, \eta_2 = 2.$$

**Задача 2.37.***Юрин Кирилл*

$$E_1 = 1, E_2 = 2, \eta_1 = 2, \eta_2 = 4.$$