

Структурные модели среды

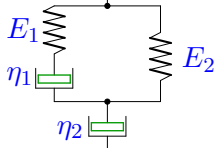
Вывести определяющее уравнение среды.

Модули упругости и коэффициенты вязкости даны в безразмерном виде. В ответах приведены коэффициенты уравнения

$$A_2\ddot{\sigma} + A_1\dot{\sigma} + A_0\sigma = B_2\ddot{\varepsilon} + B_1\dot{\varepsilon} + B_0\varepsilon.$$

Задача M2.1.

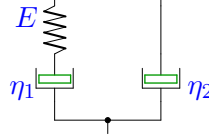
201



$$E_1 = 2, E_2 = 1, \eta_1 = 1, \eta_2 = 2.$$

Задача M2.2.

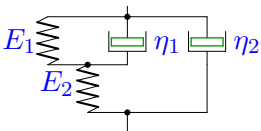
201



$$E = 3, \eta_1 = 2, \eta_2 = 1.$$

Задача M2.3.

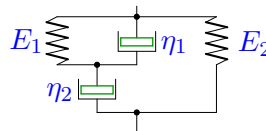
201



$$E_1 = 2, E_2 = 1, \eta_1 = 1, \eta_2 = 4.$$

Задача M2.4.

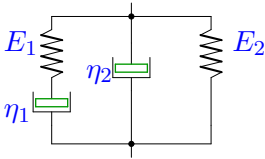
201



$$E_1 = 2, E_2 = 1, \eta_1 = 2, \eta_2 = 1.$$

Задача M2.5.

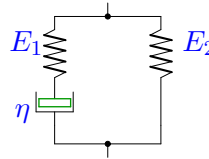
201



$$E_1 = 2, E_2 = 3, \eta_1 = 1, \eta_2 = 4.$$

Задача M2.6.

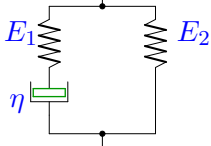
201



$$E_1 = 1, E_2 = 3, \eta = 1$$

Задача M2.7.

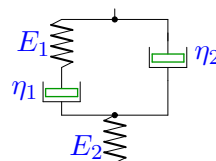
201



$$E_1 = 1, E_2 = 2, \eta = 2$$

Задача M2.8.

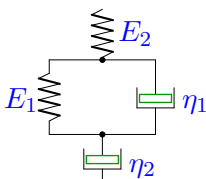
201



$$E_1 = 2, E_2 = 1, \eta_1 = 1, \eta_2 = 4.$$

Задача M2.9.

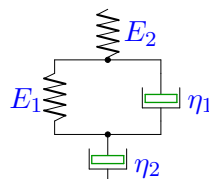
201



$$E_1 = 1, E_2 = 2, \eta_1 = 1, \eta_2 = 2.$$

Задача M2.10.

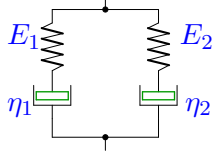
201



$$E_1 = 2, E_2 = 1, \eta_1 = 2, \eta_2 = 1.$$

Задача M2.11.

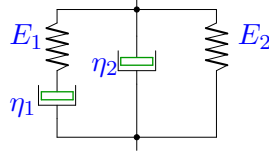
201



$$E_1 = 1, E_2 = 3, \eta_1 = 1, \eta_2 = 2.$$

Задача M2.12.

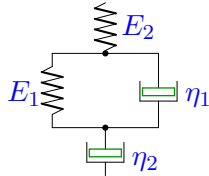
201



$$E_1 = 2, E_2 = 3, \eta_1 = 2, \eta_2 = 4.$$

Задача M2.13.

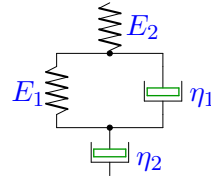
201



$$E_1 = 1, E_2 = 2, \eta_1 = 1, \eta_2 = 2.$$

Задача M2.14.

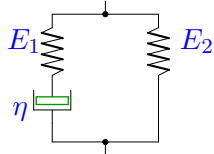
201



$$E_1 = 1, E_2 = 2, \eta_1 = 1, \eta_2 = 4.$$

Задача M2.15.

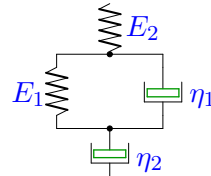
201



$$E_1 = 1, E_2 = 2, \eta = 2$$

Задача M2.16.

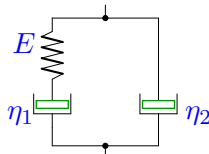
201



$$E_1 = 1, E_2 = 2, \eta_1 = 2, \eta_2 = 4.$$

Задача M2.17.

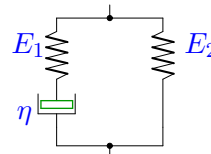
201



$$E = 1, \eta_1 = 2, \eta_2 = 4.$$

Задача M2.18.

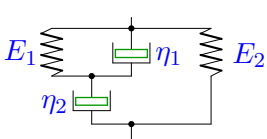
201



$$E_1 = 1, E_2 = 2, \eta = 1$$

Задача M2.19.

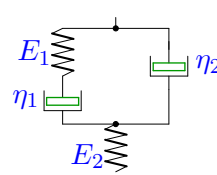
201



$$E_1 = 2, E_2 = 1, \eta_1 = 2, \eta_2 = 1.$$

Задача M2.20.

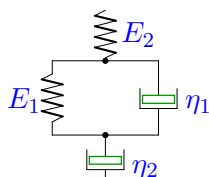
201



$$E_1 = 2, E_2 = 3, \eta_1 = 1, \eta_2 = 4.$$

Задача M2.21.

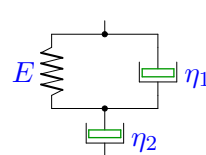
201



$$E_1 = 1, E_2 = 3, \eta_1 = 2, \eta_2 = 1.$$

Задача M2.22.

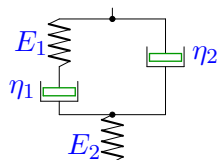
201



$$E = 1, \eta_1 = 1, \eta_2 = 4.$$

Задача M2.23.

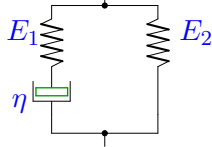
201



$E_1 = 1, E_2 = 2, \eta_1 = 1, \eta_2 = 2.$

Задача M2.24.

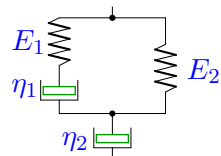
201



$E_1 = 1, E_2 = 3, \eta = 2$

Задача M2.25.

201



$E_1 = 2, E_2 = 1, \eta_1 = 1, \eta_2 = 2.$

M2 Ответы.
Структурные модели среды

26.04.2013

	A_2	A_1	A_0	B_2	B_1	B_0
1	2	7	2	6	4	0
2	0	2	3	2	9	0
3	0	1	3	4	13	2
4	0	3	2	2	5	2
5	0	1	2	4	13	6
6	0	1	1	0	4	3
7	0	2	1	0	6	2
8	4	11	2	4	10	0
9	2	8	2	4	4	0
10	2	5	2	2	2	0
11	2	5	3	8	9	0
12	0	2	2	8	18	6
13	2	8	2	4	4	0
14	4	14	2	8	8	0
15	0	2	1	0	6	2
16	8	16	2	16	8	0
17	0	2	1	8	6	0
18	0	1	1	0	3	2
19	0	3	2	2	5	2
20	4	13	6	12	30	0
21	2	10	3	6	3	0
22	0	5	1	4	4	0
23	2	5	2	4	6	0
24	0	2	1	0	8	3
25	2	7	2	6	4	0