

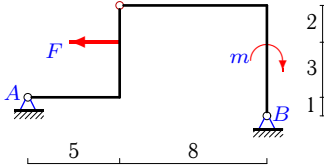
Простая составная конструкция

Определить реакции опор конструкции (в кН), состоящей из двух тел.

Кирсанов М.Н. **Решебник. Теоретическая механика**/Под ред. А. И. Кириллова.– М.: ФИЗМАТЛИТ, 2008. — 384 с. (с.67.)

Задача 24.1.

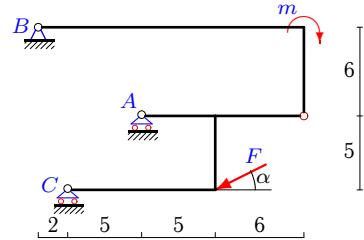
27



$$F = 5 \text{ кН}, m = 4 \text{ кНм.}$$

Задача 24.2.

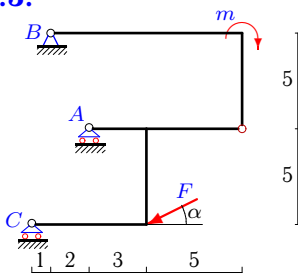
27



$$F = 225 \text{ кН}, m = 450 \text{ кНм}, \cos \alpha = 0.8.$$

Задача 24.3.

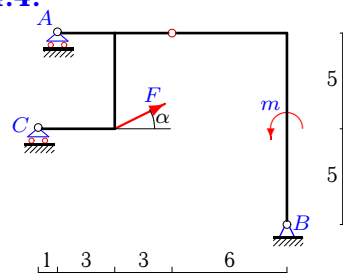
27



$$F = 30 \text{ кН}, m = 30 \text{ кНм}, \cos \alpha = 0.8.$$

Задача 24.4.

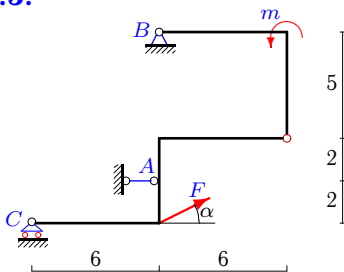
27



$$F = 30 \text{ кН}, m = 30 \text{ кНм}, \cos \alpha = 0.8.$$

Задача 24.5.

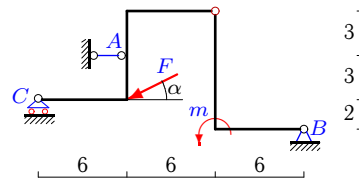
27



$$F = 15 \text{ кН}, m = 15 \text{ кНм}, \cos \alpha = 0.8.$$

Задача 24.6.

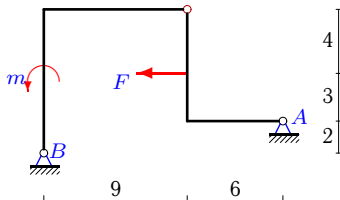
27



$$F = 190 \text{ кН}, m = 190 \text{ кНм}, \cos \alpha = 0.8.$$

Задача 24.7.

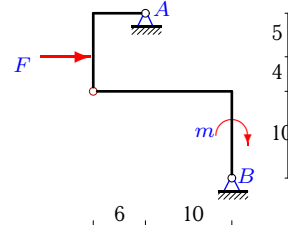
27



$$F = 2 \text{ кН}, m = 9 \text{ кНм.}$$

Задача 24.8.

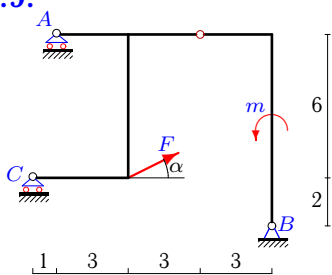
27



$$F = 36 \text{ кН}, m = 4 \text{ кНм.}$$

Задача 24.9.

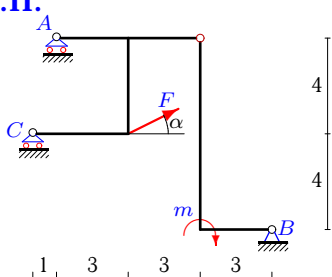
27



$F = 5 \text{ кН}, m = 5 \text{ кНм}, \cos \alpha = 0.8.$

Задача 24.11.

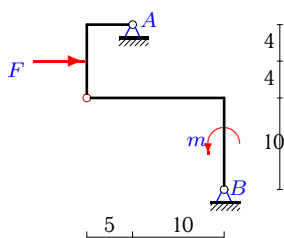
27



$F = 15 \text{ кН}, m = 15 \text{ кНм}, \cos \alpha = 0.8.$

Задача 24.13.

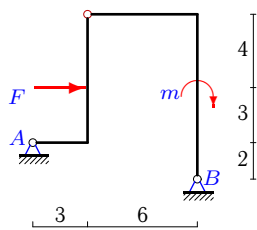
27



$F = 2 \text{ кН}, m = 10 \text{ кНм}.$

Задача 24.15.

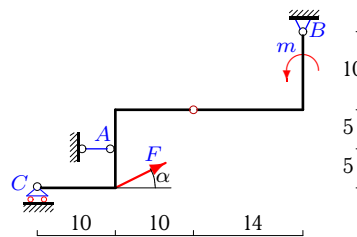
27



$F = 12 \text{ кН}, m = 3 \text{ кНм}.$

Задача 24.10.

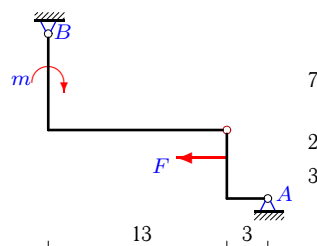
27



$F = 65 \text{ кН}, m = 130 \text{ кНм}, \cos \alpha = 0.8.$

Задача 24.12.

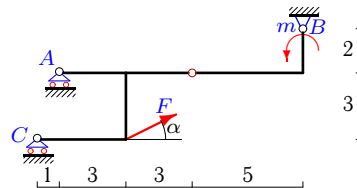
27



$F = 3 \text{ кН}, m = 5 \text{ кНм}.$

Задача 24.14.

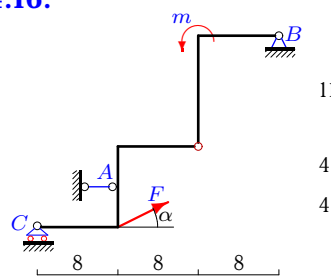
27



$F = 25 \text{ кН}, m = 25 \text{ кНм}, \cos \alpha = 0.8.$

Задача 24.16.

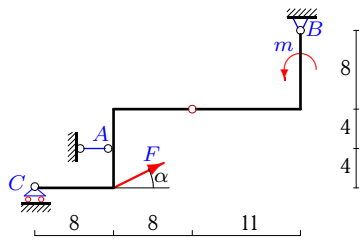
27



$F = 45 \text{ кН}, m = 90 \text{ кНм}, \cos \alpha = 0.8.$

Задача 24.17.

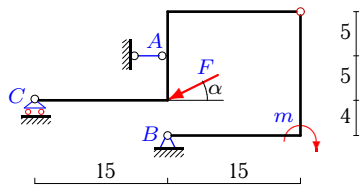
27



$F = 15 \text{ кН}, m = 30 \text{ кНм}, \cos \alpha = 0.8.$

Задача 24.19.

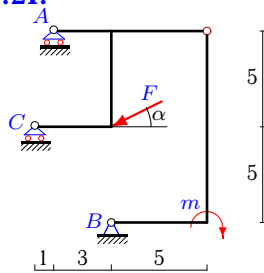
27



$F = 115 \text{ кН}, m = 230 \text{ кНм}, \cos \alpha = 0.8.$

Задача 24.21.

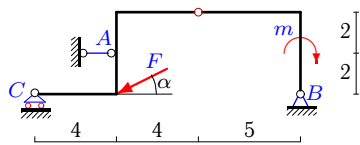
27



$F = 5 \text{ кН}, m = 5 \text{ кНм}, \cos \alpha = 0.8.$

Задача 24.23.

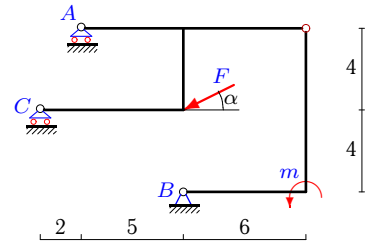
27



$F = 35 \text{ кН}, m = 35 \text{ кНм}, \cos \alpha = 0.8.$

Задача 24.18.

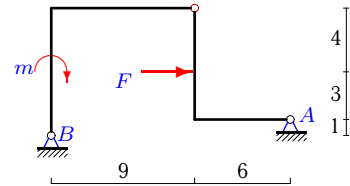
27



$F = 5 \text{ кН}, m = 10 \text{ кНм}, \cos \alpha = 0.8.$

Задача 24.20.

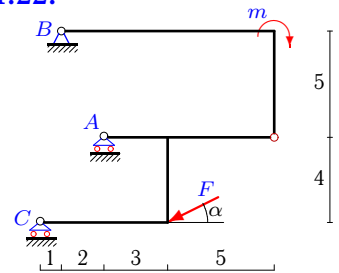
27



$F = 13 \text{ кН}, m = 3 \text{ кНм}.$

Задача 24.22.

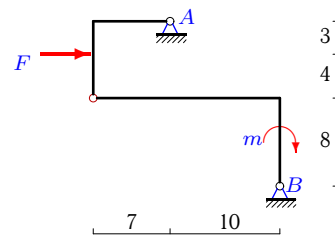
27



$F = 10 \text{ кН}, m = 10 \text{ кНм}, \cos \alpha = 0.8.$

Задача 24.24.

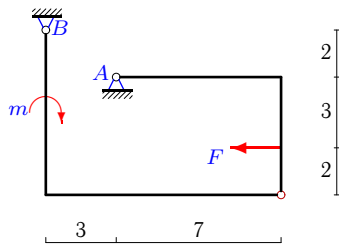
27



$F = 35 \text{ кН}, m = 5 \text{ кНм}.$

Задача 24.25.

27

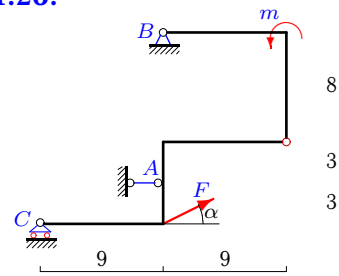


$F = 4 \text{ кН}, m = 5 \text{ кНм.}$

24.27

Задача 24.26.

27



$F = 95 \text{ кН}, m = 95 \text{ кНм}, \cos \alpha = 0.8.$

Простая составная конструкция

26.10.2010

	X_A	Y_A	X_B	Y_B	Y_C	M_B
1	3	1	2	-1	-	-
2	-	722	180	-85	-502	-
3	-	131	24	-15	-98	-
4	-	-437	-24	35	384	-
5	-21	-	9	-5	-4	-
6	232	-	-80	75	39	-
7	2	-1	0	1	-	-
8	-22	-9	-14	9	-	-
9	-	-99	-4	9	87	-
10	-2	-	-50	-45	6	-
11	-	-343	-12	37	297	-
12	0	2	3	-2	-	-
13	-1	0	-1	0	-	-
14	-	-29	-20	-13	27	-
15	-9	-5	-3	5	-	-
16	-26	-	-10	-25	-2	-
17	-2	-	-10	-10	1	-
18	-	-27	4	7	23	-
19	7	-	85	64	5	-
20	-10	3	-3	-3	-	-
21	-	-31	4	7	27	-
22	-	41	8	-5	-30	-
23	38	-	-10	15	6	-
24	-25	-5	-10	5	-	-
25	-151	109	155	-109	-	-
26	-125	-	49	-33	-24	-

24.27