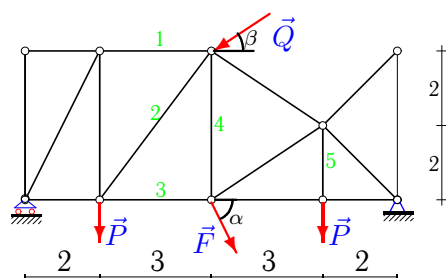


Расчет фермы (стойки)

Кирсанов М.Н. **Решебник. Теоретическая механика**/Под ред. А. И. Кириллова.– М.: ФИЗМАТЛИТ, 2008. — 384 с. (с.37.)

Задача 5.1.

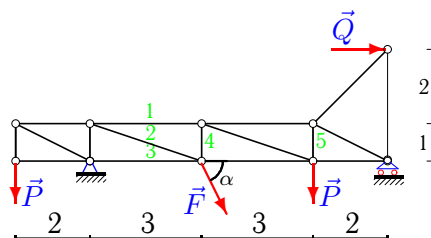
Боднарь Полина



$$P = 70 \text{ кН}, Q = 70 \text{ кН}, F = 25 \text{ кН}, \\ \alpha = 45^\circ, \beta = 30^\circ.$$

Задача 5.2.

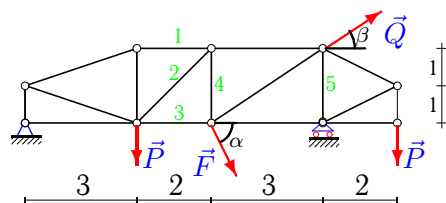
Винников Александр



$$P = 70 \text{ кН}, Q = 90 \text{ кН}, \\ F = 15 \text{ кН}, \alpha = 45^\circ.$$

Задача 5.3.

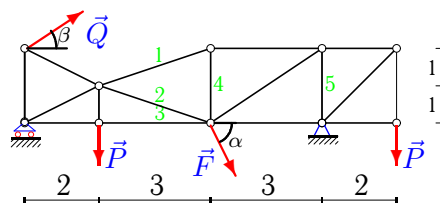
Ефимов Александр



$$P = 10 \text{ кН}, Q = 90 \text{ кН}, F = 30 \text{ кН}, \\ \alpha = 60^\circ, \beta = 15^\circ.$$

Задача 5.4.

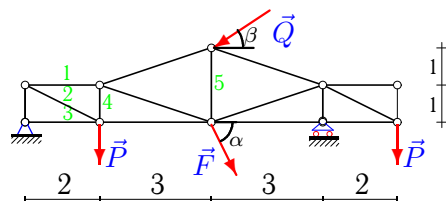
Источкин Андрей



$$P = 30 \text{ кН}, Q = 70 \text{ кН}, F = 24 \text{ кН}, \\ \alpha = 70^\circ, \beta = 45^\circ.$$

Задача 5.5.

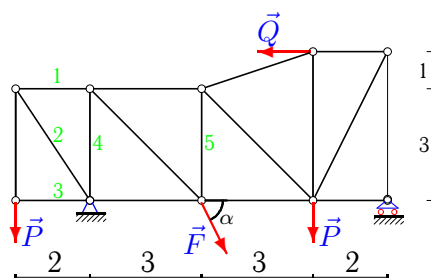
Криворотенко Владислав



$$P = 50 \text{ кН}, Q = 30 \text{ кН}, F = 35 \text{ кН}, \\ \alpha = 35^\circ, \beta = 15^\circ.$$

Задача 5.6.

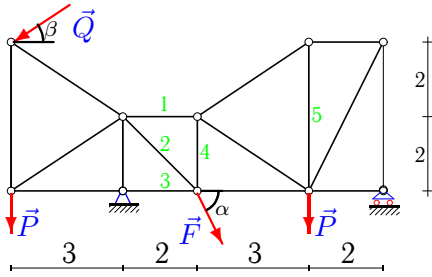
Крошкин Артём



$$P = 50 \text{ кН}, Q = 60 \text{ кН}, \\ F = 38 \text{ кН}, \alpha = 35^\circ.$$

Задача 5.7.

Лукьянчиков Алексей

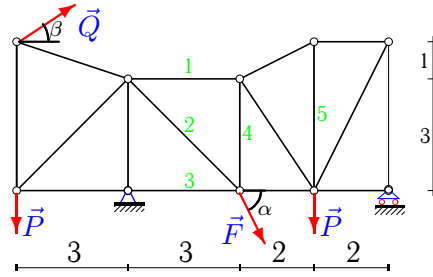


$$P = 30 \text{ кН}, Q = 30 \text{ кН}, F = 23 \text{ кН},$$

$$\alpha = 70^\circ, \beta = 30^\circ.$$

Задача 5.8.

Маслов Владимир

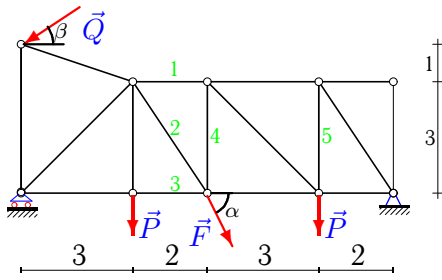


$$P = 10 \text{ кН}, Q = 90 \text{ кН}, F = 56 \text{ кН},$$

$$\alpha = 60^\circ, \beta = 30^\circ.$$

Задача 5.9.

Назаров Сергей

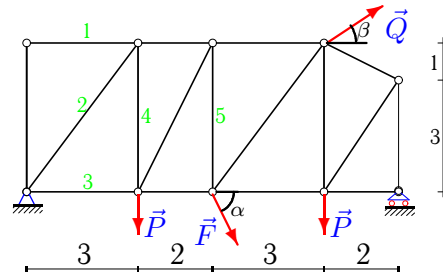


$$P = 80 \text{ кН}, Q = 30 \text{ кН}, F = 39 \text{ кН},$$

$$\alpha = 50^\circ, \beta = 30^\circ.$$

Задача 5.10.

Никитин Иван

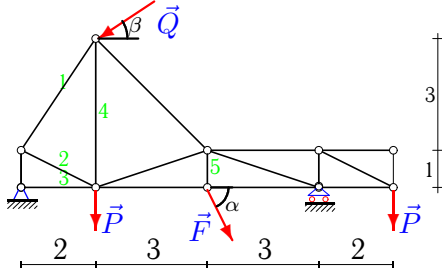


$$P = 40 \text{ кН}, Q = 40 \text{ кН}, F = 48 \text{ кН},$$

$$\alpha = 75^\circ, \beta = 15^\circ.$$

Задача 5.11.

Семиошкина Алиса



$$P = 50 \text{ кН}, Q = 70 \text{ кН}, F = 13 \text{ кН},$$

$$\alpha = 35^\circ, \beta = 15^\circ.$$