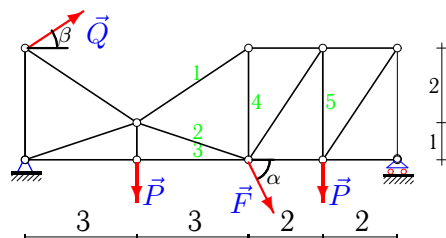


## Расчет фермы (стойки)

Кирсанов М.Н. **Решебник. Теоретическая механика**/Под ред. А. И. Кириллова.– М.: ФИЗМАТЛИТ, 2008. — 384 с. (с.37.)

### Задача 5.1.

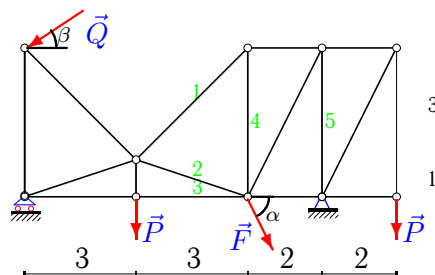
*Буйнажев Евгений*



$$P = 80 \text{ кН}, Q = 40 \text{ кН}, F = 44 \text{ кН}, \\ \alpha = 50^\circ, \beta = 15^\circ.$$

### Задача 5.2.

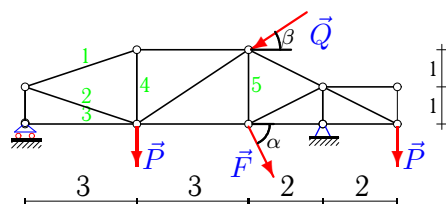
*Дзядевич Игорь*



$$P = 20 \text{ кН}, Q = 30 \text{ кН}, F = 35 \text{ кН}, \\ \alpha = 65^\circ, \beta = 45^\circ.$$

### Задача 5.3.

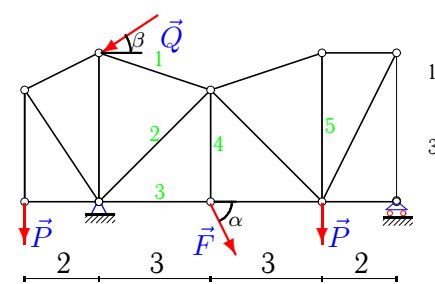
*Еремин Илья*



$$P = 40 \text{ кН}, Q = 90 \text{ кН}, F = 45 \text{ кН}, \\ \alpha = 75^\circ, \beta = 45^\circ.$$

### Задача 5.4.

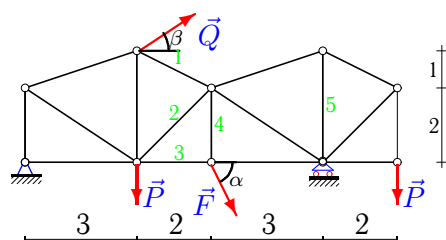
*Есопов Вячеслав*



$$P = 60 \text{ кН}, Q = 40 \text{ кН}, F = 39 \text{ кН}, \\ \alpha = 40^\circ, \beta = 30^\circ.$$

### Задача 5.5.

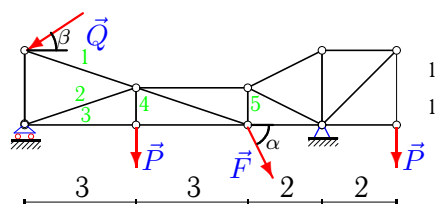
*Захарченко Николай*



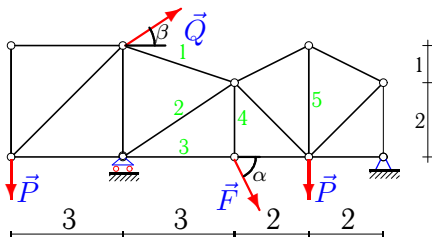
$$P = 20 \text{ кН}, Q = 90 \text{ кН}, F = 36 \text{ кН}, \\ \alpha = 65^\circ, \beta = 15^\circ.$$

### Задача 5.6.

*Иванков Никита*

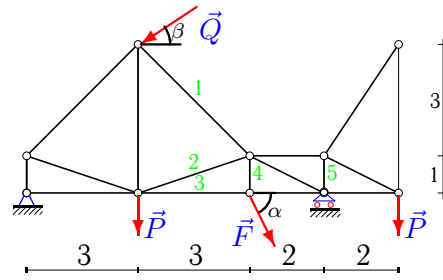


$$P = 50 \text{ кН}, Q = 60 \text{ кН}, F = 57 \text{ кН}, \\ \alpha = 35^\circ, \beta = 45^\circ.$$

**Задача 5.7.***Мелкумян Сурен*

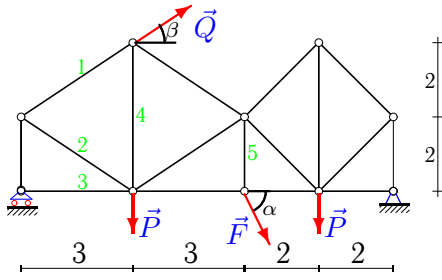
$$P = 90 \text{ кН}, Q = 60 \text{ кН}, F = 36 \text{ кН},$$

$$\alpha = 55^\circ, \beta = 45^\circ.$$

**Задача 5.8.***Михайлов Игорь*

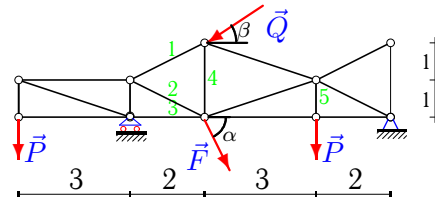
$$P = 20 \text{ кН}, Q = 40 \text{ кН}, F = 53 \text{ кН},$$

$$\alpha = 65^\circ, \beta = 15^\circ.$$

**Задача 5.9.***Никольский Павел*

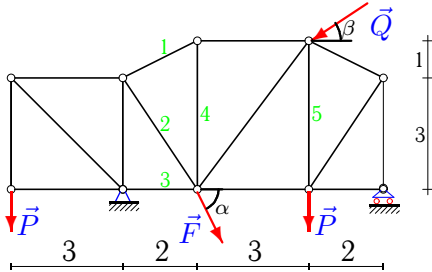
$$P = 40 \text{ кН}, Q = 30 \text{ кН}, F = 42 \text{ кН},$$

$$\alpha = 75^\circ, \beta = 30^\circ.$$

**Задача 5.10.***Примеров Андрей*

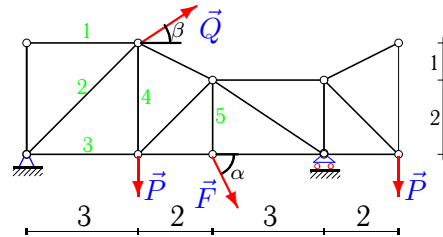
$$P = 60 \text{ кН}, Q = 70 \text{ кН}, F = 41 \text{ кН},$$

$$\alpha = 40^\circ, \beta = 45^\circ.$$

**Задача 5.11.***Соловьев Тимофей*

$$P = 10 \text{ кН}, Q = 80 \text{ кН}, F = 23 \text{ кН},$$

$$\alpha = 60^\circ, \beta = 30^\circ.$$

**Задача 5.12.***Яблокова Марина*

$$P = 40 \text{ кН}, Q = 30 \text{ кН}, F = 50 \text{ кН},$$

$$\alpha = 75^\circ, \beta = 15^\circ.$$