

Структурные модели среды

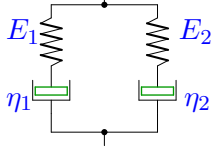
Вывести определяющее уравнение среды.

Модули упругости и коэффициенты вязкости даны в безразмерном виде. В ответах приведены коэффициенты уравнения

$$A_2\ddot{\sigma} + A_1\dot{\sigma} + A_0\sigma = B_2\ddot{\varepsilon} + B_1\dot{\varepsilon} + B_0\varepsilon.$$

Задача M2.1.

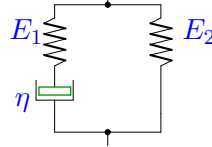
16



$$E_1 = 2, E_2 = 1, \eta_1 = 2, \eta_2 = 4.$$

Задача M2.2.

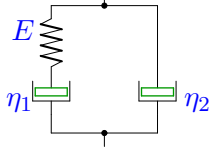
16



$$E_1 = 2, E_2 = 1, \eta = 2$$

Задача M2.3.

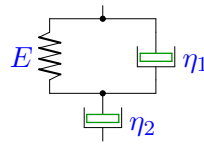
16



$$E = 3, \eta_1 = 2, \eta_2 = 1.$$

Задача M2.4.

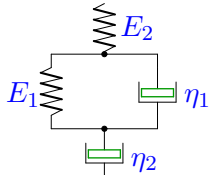
16



$$E = 1, \eta_1 = 2, \eta_2 = 1.$$

Задача M2.5.

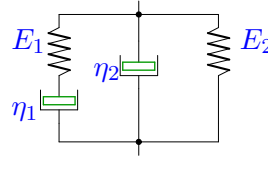
16



$$E_1 = 1, E_2 = 3, \eta_1 = 2, \eta_2 = 1.$$

Задача M2.6.

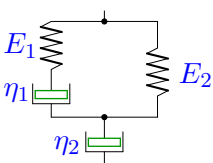
16



$$E_1 = 2, E_2 = 1, \eta_1 = 2, \eta_2 = 1.$$

Задача M2.7.

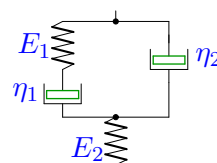
16



$$E_1 = 1, E_2 = 3, \eta_1 = 2, \eta_2 = 1.$$

Задача M2.8.

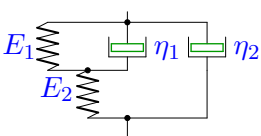
16



$$E_1 = 2, E_2 = 1, \eta_1 = 2, \eta_2 = 4.$$

Задача M2.9.

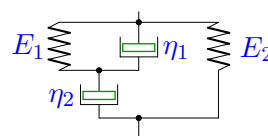
16



$$E_1 = 1, E_2 = 3, \eta_1 = 2, \eta_2 = 4.$$

Задача M2.10.

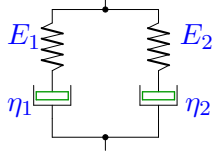
16



$$E_1 = 2, E_2 = 1, \eta_1 = 2, \eta_2 = 1.$$

Задача M2.11.

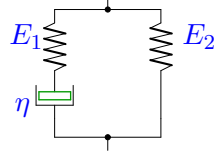
16



$$E_1 = 1, E_2 = 2, \eta_1 = 1, \eta_2 = 4.$$

Задача M2.12.

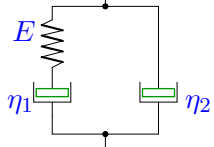
16



$$E_1 = 1, E_2 = 2, \eta = 1$$

Задача M2.13.

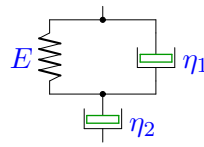
16



$$E = 3, \eta_1 = 1, \eta_2 = 4.$$

Задача M2.14.

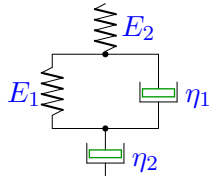
16



$$E = 2, \eta_1 = 1, \eta_2 = 4.$$

Задача M2.15.

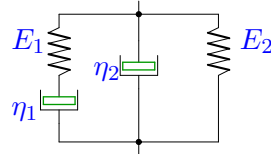
16



$$E_1 = 1, E_2 = 2, \eta_1 = 1, \eta_2 = 4.$$

Задача M2.16.

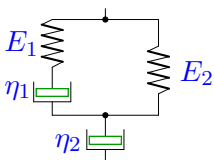
16



$$E_1 = 1, E_2 = 2, \eta_1 = 1, \eta_2 = 2.$$

Задача M2.17.

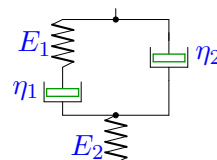
16



$$E_1 = 1, E_2 = 2, \eta_1 = 1, \eta_2 = 2.$$

Задача M2.18.

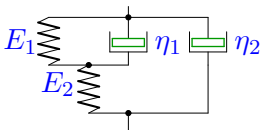
16



$$E_1 = 1, E_2 = 2, \eta_1 = 1, \eta_2 = 4.$$

Задача M2.19.

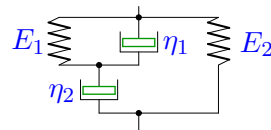
16



$$E_1 = 1, E_2 = 2, \eta_1 = 1, \eta_2 = 4.$$

Задача M2.20.

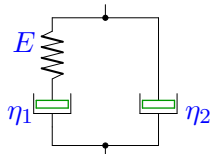
16



$$E_1 = 2, E_2 = 3, \eta_1 = 1, \eta_2 = 2.$$

Задача M2.21.

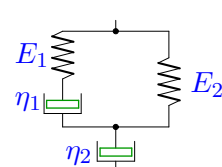
16



$$E = 3, \eta_1 = 1, \eta_2 = 2.$$

Задача M2.22.

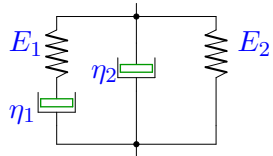
16



$$E_1 = 2, E_2 = 3, \eta_1 = 1, \eta_2 = 2.$$

Задача M2.23.

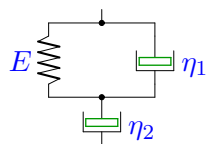
16



$$E_1 = 1, E_2 = 2, \eta_1 = 1, \eta_2 = 2.$$

Задача M2.24.

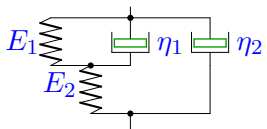
16



$$E = 3, \eta_1 = 1, \eta_2 = 4.$$

Задача M2.25.

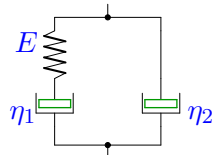
16



$$E_1 = 2, E_2 = 3, \eta_1 = 2, \eta_2 = 4.$$

Задача M2.26.

16



$$E = 3, \eta_1 = 2, \eta_2 = 4.$$