

Структурные модели среды

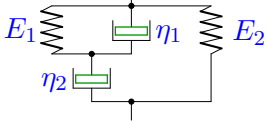
Вывести определяющее уравнение среды.

Модули упругости и коэффициенты вязкости даны в безразмерном виде. В ответах приведены коэффициенты уравнения

$$A_2\ddot{\sigma} + A_1\dot{\sigma} + A_0\sigma = B_2\ddot{\varepsilon} + B_1\dot{\varepsilon} + B_0\varepsilon.$$

Задача M2.1.

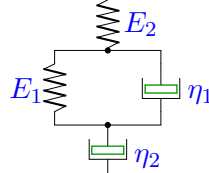
407



$$E_1 = 1, E_2 = 2, \eta_1 = 2, \eta_2 = 1.$$

Задача M2.2.

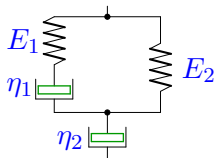
407



$$E_1 = 2, E_2 = 3, \eta_1 = 1, \eta_2 = 4.$$

Задача M2.3.

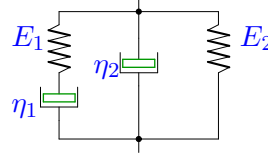
407



$$E_1 = 2, E_2 = 3, \eta_1 = 2, \eta_2 = 1.$$

Задача M2.4.

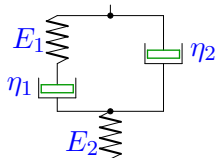
407



$$E_1 = 1, E_2 = 2, \eta_1 = 2, \eta_2 = 4.$$

Задача M2.5.

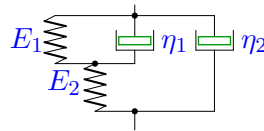
407



$$E_1 = 2, E_2 = 3, \eta_1 = 1, \eta_2 = 4.$$

Задача M2.6.

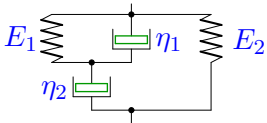
407



$$E_1 = 1, E_2 = 2, \eta_1 = 1, \eta_2 = 4.$$

Задача M2.7.

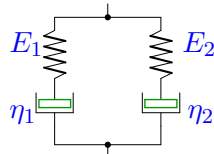
407



$$E_1 = 1, E_2 = 2, \eta_1 = 2, \eta_2 = 1.$$

Задача M2.8.

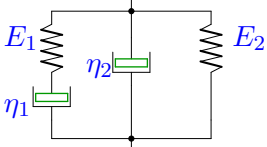
407



$$E_1 = 1, E_2 = 3, \eta_1 = 1, \eta_2 = 2.$$

Задача M2.9.

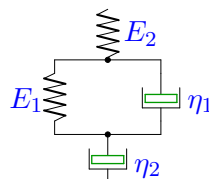
407



$$E_1 = 2, E_2 = 1, \eta_1 = 1, \eta_2 = 2.$$

Задача M2.10.

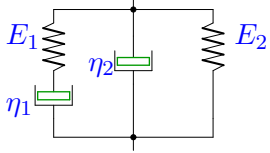
407



$$E_1 = 2, E_2 = 1, \eta_1 = 1, \eta_2 = 4.$$

Задача M2.11.

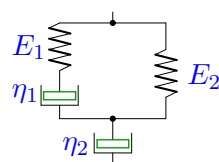
407



$E_1 = 1, E_2 = 3, \eta_1 = 1, \eta_2 = 2.$

Задача M2.12.

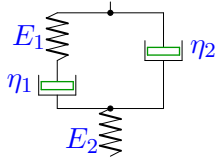
407



$E_1 = 2, E_2 = 1, \eta_1 = 2, \eta_2 = 1.$

Задача M2.13.

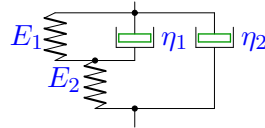
407



$E_1 = 1, E_2 = 3, \eta_1 = 1, \eta_2 = 2.$

Задача M2.14.

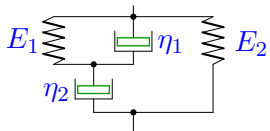
407



$E_1 = 1, E_2 = 3, \eta_1 = 2, \eta_2 = 4.$

Задача M2.15.

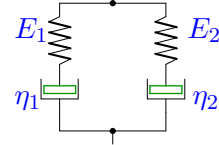
407



$E_1 = 2, E_2 = 1, \eta_1 = 2, \eta_2 = 1.$

Задача M2.16.

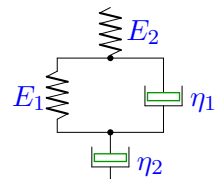
407



$E_1 = 1, E_2 = 3, \eta_1 = 1, \eta_2 = 4.$

Задача M2.17.

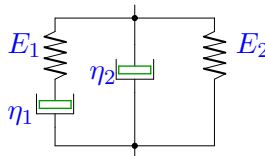
407



$E_1 = 2, E_2 = 1, \eta_1 = 1, \eta_2 = 4.$

Задача M2.18.

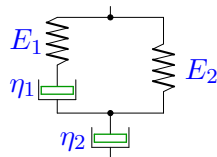
407



$E_1 = 2, E_2 = 1, \eta_1 = 1, \eta_2 = 2.$

Задача M2.19.

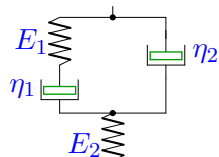
407



$E_1 = 1, E_2 = 3, \eta_1 = 2, \eta_2 = 1.$

Задача M2.20.

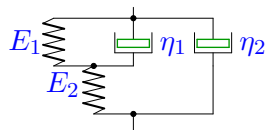
407



$E_1 = 2, E_2 = 1, \eta_1 = 1, \eta_2 = 2.$

Задача M2.21.

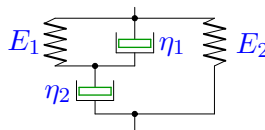
407



$E_1 = 1, E_2 = 3, \eta_1 = 2, \eta_2 = 1.$

Задача M2.22.

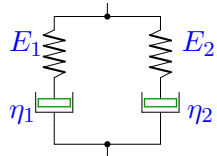
407



$E_1 = 2, E_2 = 1, \eta_1 = 1, \eta_2 = 4.$

Задача М2.23.

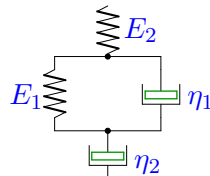
407



$$E_1 = 2, E_2 = 3, \eta_1 = 1, \eta_2 = 2.$$

Задача М2.24.

407



$$E_1 = 2, E_2 = 3, \eta_1 = 1, \eta_2 = 2.$$