

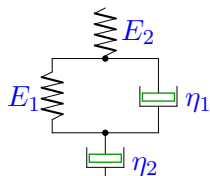
# Структурные модели среды

Вывести определяющее уравнение среды.

Модули упругости и коэффициенты вязкости даны в безразмерном виде. В ответах приведены коэффициенты уравнения

$$A_2\ddot{\sigma} + A_1\dot{\sigma} + A_0\sigma = B_2\ddot{\epsilon} + B_1\dot{\epsilon} + B_0\epsilon.$$

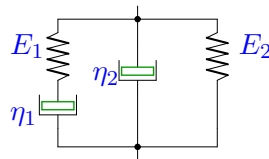
**Задача М2.1.** Антипенкова Анастасия



$$E_1 = 1, E_2 = 3, \eta_1 = 2, \eta_2 = 4.$$

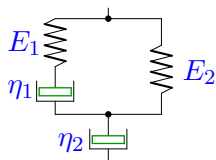
**Задача М2.2.**

Бабайцева Ксения



$$E_1 = 1, E_2 = 3, \eta_1 = 2, \eta_2 = 4.$$

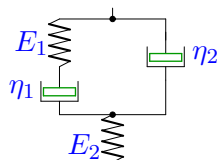
**Задача М2.3.** Булатова Елизавета



$$E_1 = 2, E_2 = 1, \eta_1 = 2, \eta_2 = 4.$$

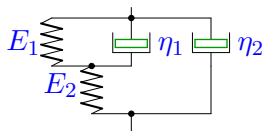
**Задача М2.4.**

Висков Андрей



$$E_1 = 1, E_2 = 3, \eta_1 = 2, \eta_2 = 4.$$

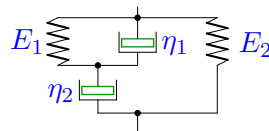
**Задача М2.5.** Габриелян Георгий



$$E_1 = 1, E_2 = 3, \eta_1 = 2, \eta_2 = 4.$$

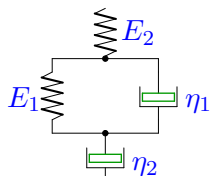
**Задача М2.6.**

Галина Анастасия



$$E_1 = 2, E_2 = 3, \eta_1 = 2, \eta_2 = 4.$$

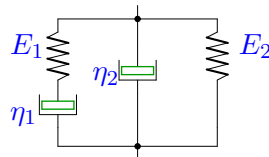
**Задача М2.7.** Журавлева Каролина



$$E_1 = 1, E_2 = 2, \eta_1 = 1, \eta_2 = 2.$$

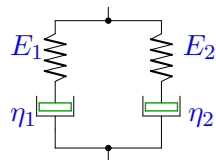
**Задача М2.8.**

Калашиникова Дарья



$$E_1 = 2, E_2 = 3, \eta_1 = 1, \eta_2 = 2.$$

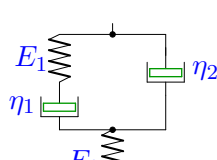
**Задача М2.9.** Каткова Ольга



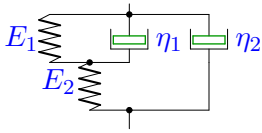
$$E_1 = 1, E_2 = 2, \eta_1 = 1, \eta_2 = 4.$$

**Задача М2.10.**

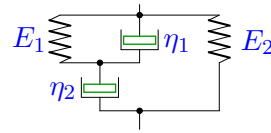
Ковальчук Наталия



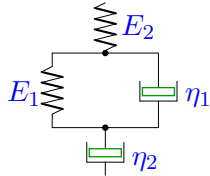
$$E_1 = 1, E_2 = 2, \eta_1 = 1, \eta_2 = 2.$$

**Задача M2.11.***Козлова Анна*

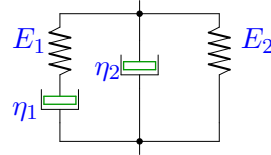
$$E_1 = 2, E_2 = 3, \eta_1 = 1, \eta_2 = 4.$$

**Задача M2.12.***Кокарева Екатерина*

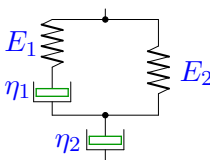
$$E_1 = 2, E_2 = 3, \eta_1 = 1, \eta_2 = 2.$$

**Задача M2.13.***Конго Анна*

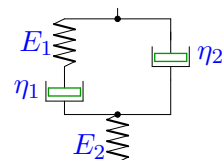
$$E_1 = 1, E_2 = 2, \eta_1 = 2, \eta_2 = 1.$$

**Задача M2.14.***Кугук Юрий*

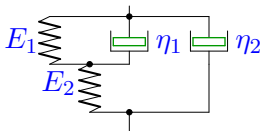
$$E_1 = 1, E_2 = 3, \eta_1 = 2, \eta_2 = 1.$$

**Задача M2.15.***Куквякина Надежда*

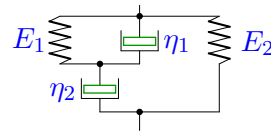
$$E_1 = 2, E_2 = 3, \eta_1 = 2, \eta_2 = 1.$$

**Задача M2.16.***Панков Алексей*

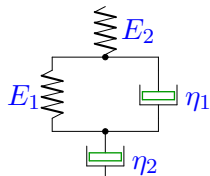
$$E_1 = 2, E_2 = 1, \eta_1 = 1, \eta_2 = 4.$$

**Задача M2.17.***Рогачёв Дмитрий*

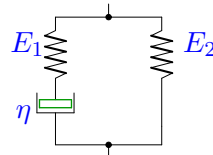
$$E_1 = 2, E_2 = 3, \eta_1 = 1, \eta_2 = 4.$$

**Задача M2.18.***Садекова Альбина*

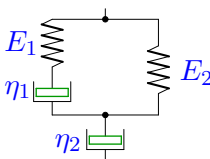
$$E_1 = 2, E_2 = 3, \eta_1 = 1, \eta_2 = 2.$$

**Задача M2.19.***Сиротенко Григорий*

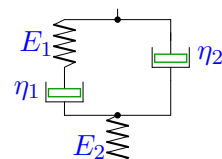
$$E_1 = 1, E_2 = 3, \eta_1 = 2, \eta_2 = 1.$$

**Задача M2.20.***Титова Кира*

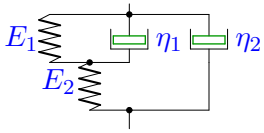
$$E_1 = 2, E_2 = 3, \eta = 1$$

**Задача M2.21.***Тоболева Василина*

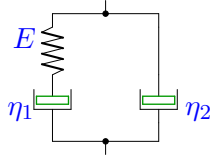
$$E_1 = 1, E_2 = 2, \eta_1 = 1, \eta_2 = 2.$$

**Задача M2.22.***Хренникова Татьяна*

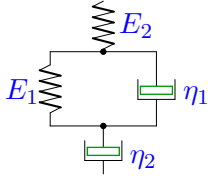
$$E_1 = 2, E_2 = 3, \eta_1 = 1, \eta_2 = 2.$$

**Задача М2.23.***Чиченёва Ксения*

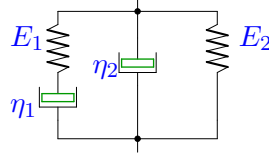
$$E_1 = 1, E_2 = 2, \eta_1 = 1, \eta_2 = 4.$$

**Задача М2.24.***Эверскова Анастасия*

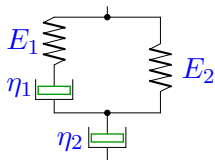
$$E = 1, \eta_1 = 2, \eta_2 = 4.$$

**Задача М2.25.***Ермаков В.*

$$E_1 = 2, E_2 = 1, \eta_1 = 1, \eta_2 = 4.$$

**Задача М2.26.***Алимов Шамиль*

$$E_1 = 2, E_2 = 3, \eta_1 = 2, \eta_2 = 4.$$

**Задача М2.27.***Зуйков Игорь*

$$E_1 = 2, E_2 = 3, \eta_1 = 2, \eta_2 = 4.$$