

# Структурные модели среды

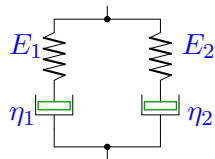
Вывести определяющее уравнение среды.

Модули упругости и коэффициенты вязкости даны в безразмерном виде. В ответах приведены коэффициенты уравнения

$$A_2\ddot{\sigma} + A_1\dot{\sigma} + A_0\sigma = B_2\ddot{\epsilon} + B_1\dot{\epsilon} + B_0\epsilon.$$

**Задача М2.1.**

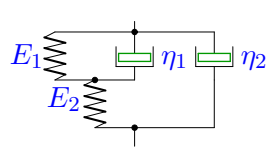
*Абзианидзе Габриел*



$$E_1 = 1, E_2 = 2, \eta_1 = 2, \eta_2 = 1.$$

**Задача М2.2.**

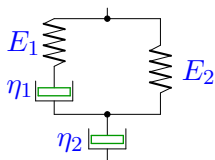
*Авдонин Антон*



$$E_1 = 1, E_2 = 2, \eta_1 = 1, \eta_2 = 4.$$

**Задача М2.3.**

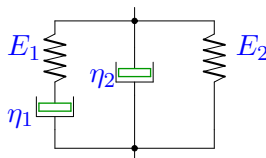
*Белов Виктор*



$$E_1 = 2, E_2 = 3, \eta_1 = 2, \eta_2 = 1.$$

**Задача М2.4.**

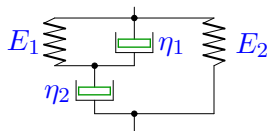
*Болотина Татьяна*



$$E_1 = 2, E_2 = 1, \eta_1 = 1, \eta_2 = 2.$$

**Задача М2.5.**

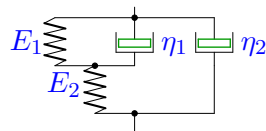
*Бубнова Ольга*



$$E_1 = 1, E_2 = 3, \eta_1 = 1, \eta_2 = 2.$$

**Задача М2.6.**

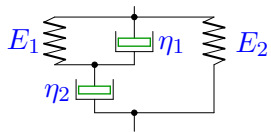
*Глушенков Павел*



$$E_1 = 1, E_2 = 2, \eta_1 = 1, \eta_2 = 4.$$

**Задача М2.7.**

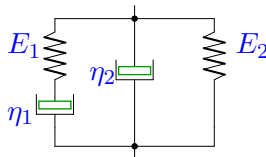
*Горьков Ярослав*



$$E_1 = 1, E_2 = 2, \eta_1 = 2, \eta_2 = 1.$$

**Задача М2.8.**

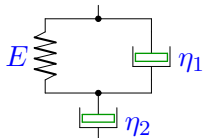
*Комарова Анастасия*



$$E_1 = 2, E_2 = 1, \eta_1 = 2, \eta_2 = 4.$$

**Задача М2.9.**

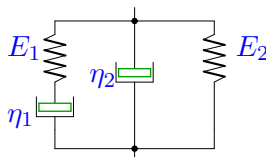
*Конева Наталья*



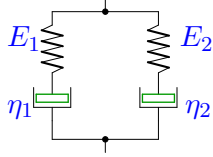
$$E = 3, \eta_1 = 2, \eta_2 = 4.$$

**Задача М2.10.**

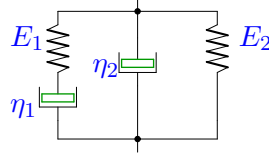
*Любимов Артур*



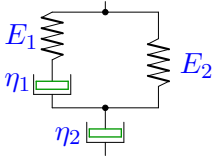
$$E_1 = 2, E_2 = 3, \eta_1 = 2, \eta_2 = 4.$$

**Задача M2.11.***Мартъянова Мария*

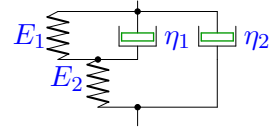
$$E_1 = 2, E_2 = 1, \eta_1 = 2, \eta_2 = 1.$$

**Задача M2.12.***Пиллягина Любовь*

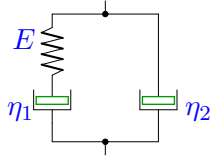
$$E_1 = 2, E_2 = 1, \eta_1 = 1, \eta_2 = 4.$$

**Задача M2.13.***Понамарева Мария*

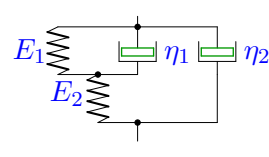
$$E_1 = 1, E_2 = 3, \eta_1 = 1, \eta_2 = 2.$$

**Задача M2.14.***Соколова Елена*

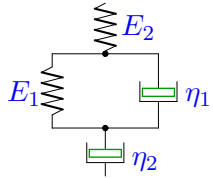
$$E_1 = 1, E_2 = 2, \eta_1 = 1, \eta_2 = 2.$$

**Задача M2.15.***Федоренкова Ольга*

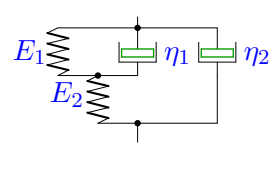
$$E = 2, \eta_1 = 2, \eta_2 = 1.$$

**Задача M2.16.***Чьонг Тхи Лан Нхи*

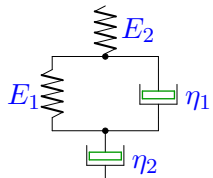
$$E_1 = 2, E_2 = 1, \eta_1 = 2, \eta_2 = 4.$$

**Задача M2.17.***Шипаева Алена*

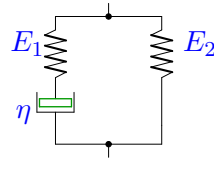
$$E_1 = 2, E_2 = 1, \eta_1 = 1, \eta_2 = 2.$$

**Задача M2.18.***Ямалетдинова Эльвира*

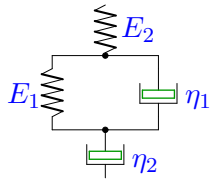
$$E_1 = 2, E_2 = 3, \eta_1 = 1, \eta_2 = 4.$$

**Задача M2.19.**

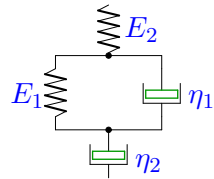
$$E_1 = 1, E_2 = 2, \eta_1 = 2, \eta_2 = 1.$$

**Задача M2.20.**

$$E_1 = 2, E_2 = 1, \eta = 1$$

**Задача M2.21.**

$$E_1 = 2, E_2 = 3, \eta_1 = 2, \eta_2 = 1.$$

**Задача M2.22.**

$$E_1 = 1, E_2 = 2, \eta_1 = 2, \eta_2 = 1.$$