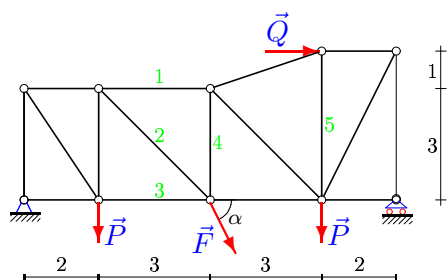


# Расчет фермы (стойки)

Кирсанов М.Н. **Решебник. Теоретическая механика**/Под ред. А. И. Кириллова.—  
М.: ФИЗМАТЛИТ, 2008. — 384 с. (с.37.)

**Задача S-5.1.**

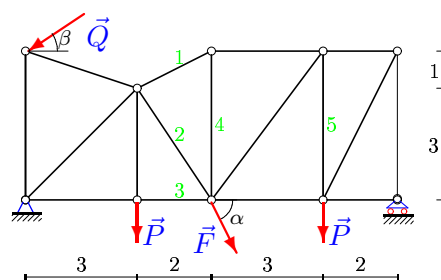
*Аббуд Карам Али*



$$P = 20 \text{ кН}, Q = 80 \text{ кН}, \\ F = 19 \text{ кН}, \alpha = 65^\circ.$$

**Задача S-5.2.**

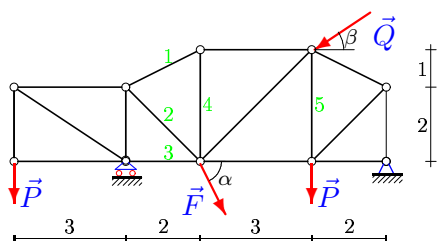
*Богомолова Арина*



$$P = 20 \text{ кН}, Q = 90 \text{ кН}, F = 23 \text{ кН}, \\ \alpha = 65^\circ, \beta = 15^\circ.$$

**Задача S-5.3.**

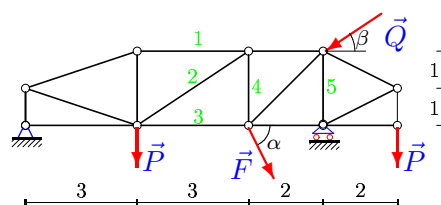
*Долгушев Алексей*



$$P = 30 \text{ кН}, Q = 80 \text{ кН}, F = 21 \text{ кН}, \\ \alpha = 70^\circ, \beta = 45^\circ.$$

**Задача S-5.4.**

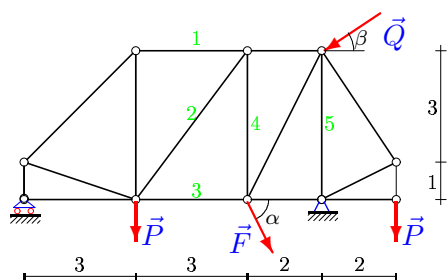
*Зайцев Сергей*



$$P = 10 \text{ кН}, Q = 30 \text{ кН}, F = 39 \text{ кН}, \\ \alpha = 60^\circ, \beta = 15^\circ.$$

**Задача S-5.5.**

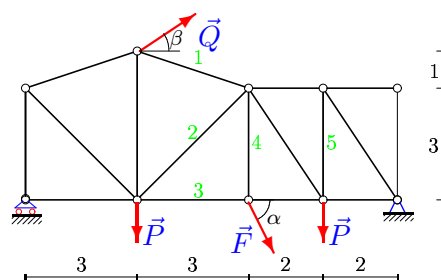
*Исаев Илья*



$$P = 30 \text{ кН}, Q = 80 \text{ кН}, F = 53 \text{ кН}, \\ \alpha = 70^\circ, \beta = 45^\circ.$$

**Задача S-5.6.**

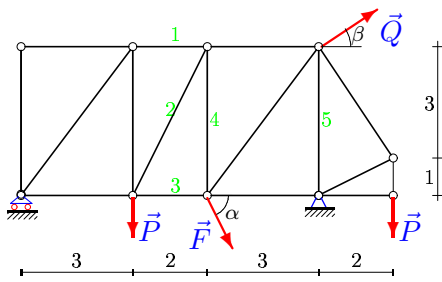
*Камынин Даниил*



$$P = 10 \text{ кН}, Q = 70 \text{ кН}, F = 52 \text{ кН}, \\ \alpha = 60^\circ, \beta = 30^\circ.$$

**Задача S-5.7.**

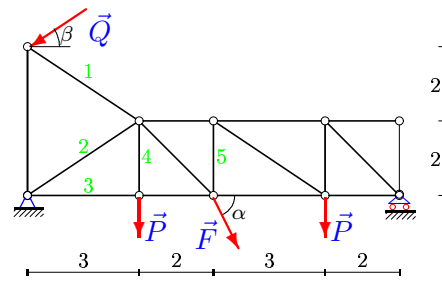
*Коршиков Максим*



$P = 90 \text{ кН}, Q = 80 \text{ кН}, F = 36 \text{ кН},$   
 $\alpha = 55^\circ, \beta = 45^\circ.$

**Задача S-5.8.**

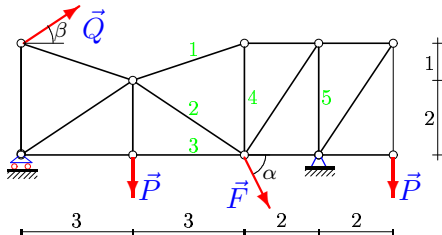
*Кузнецов Иван*



$P = 50 \text{ кН}, Q = 80 \text{ кН}, F = 31 \text{ кН},$   
 $\alpha = 35^\circ, \beta = 15^\circ.$

**Задача S-5.9.**

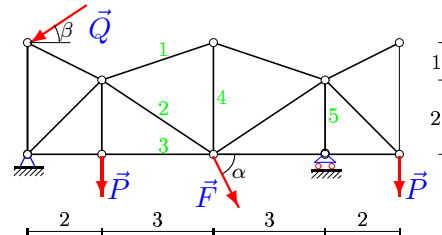
*Куренкова Виктория*



$P = 60 \text{ кН}, Q = 30 \text{ кН}, F = 42 \text{ кН},$   
 $\alpha = 40^\circ, \beta = 45^\circ.$

**Задача S-5.10.**

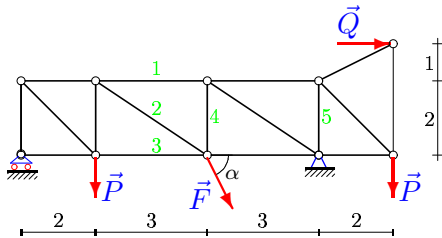
*Лысенкова Анастасия*



$P = 30 \text{ кН}, Q = 30 \text{ кН}, F = 13 \text{ кН},$   
 $\alpha = 70^\circ, \beta = 15^\circ.$

**Задача S-5.11.**

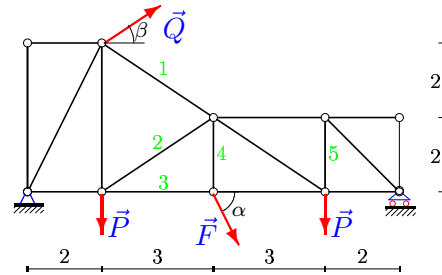
*Львов Дмитрий*



$P = 20 \text{ кН}, Q = 90 \text{ кН},$   
 $F = 21 \text{ кН}, \alpha = 65^\circ.$

**Задача S-5.12.**

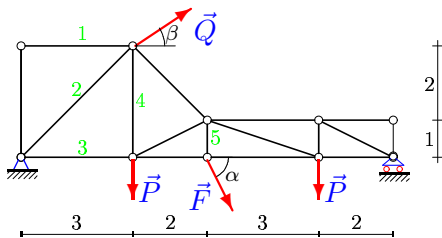
*Маликова Регина*



$P = 60 \text{ кН}, Q = 30 \text{ кН}, F = 14 \text{ кН},$   
 $\alpha = 40^\circ, \beta = 15^\circ.$

**Задача S-5.13.**

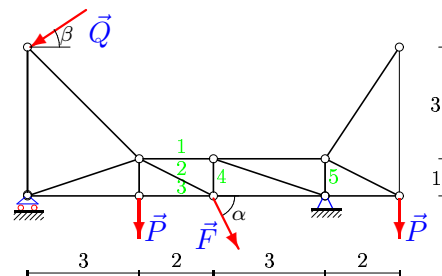
*Манев Илья*



$P = 40 \text{ кН}, Q = 30 \text{ кН}, F = 22 \text{ кН},$   
 $\alpha = 75^\circ, \beta = 15^\circ.$

**Задача S-5.14.**

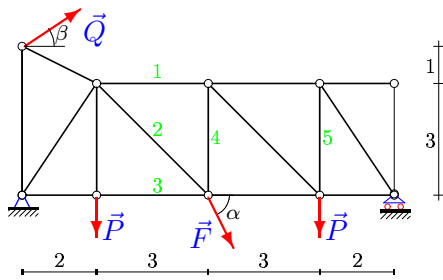
*Опрокиднёв Эрнст*



$P = 20 \text{ кН}, Q = 60 \text{ кН}, F = 31 \text{ кН},$   
 $\alpha = 65^\circ, \beta = 45^\circ.$

**Задача S-5.15.**

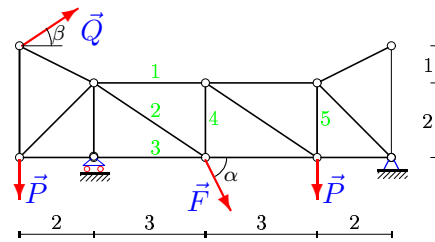
*Пошибаев Алексей*



$P = 20 \text{ кН}, Q = 30 \text{ кН}, F = 32 \text{ кН},$   
 $\alpha = 65^\circ, \beta = 15^\circ.$

**Задача S-5.16.**

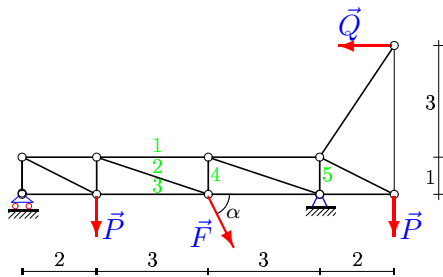
*Привезенов Николай*



$P = 10 \text{ кН}, Q = 70 \text{ кН}, F = 16 \text{ кН},$   
 $\alpha = 60^\circ, \beta = 45^\circ.$

**Задача S-5.17.**

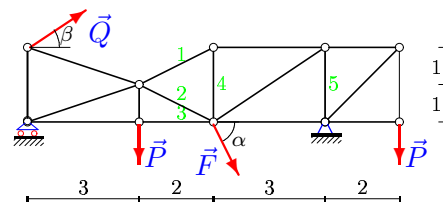
*Пышкина Инна*



$P = 80 \text{ кН}, Q = 30 \text{ кН},$   
 $F = 38 \text{ кН}, \alpha = 50^\circ.$

**Задача S-5.18.**

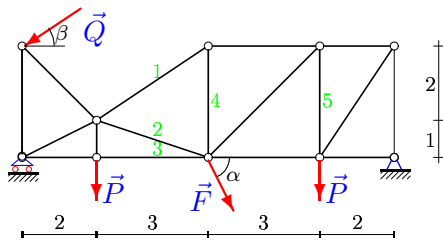
*Рашитов Данил*



$P = 60 \text{ кН}, Q = 90 \text{ кН}, F = 28 \text{ кН},$   
 $\alpha = 40^\circ, \beta = 45^\circ.$

**Задача S-5.19.**

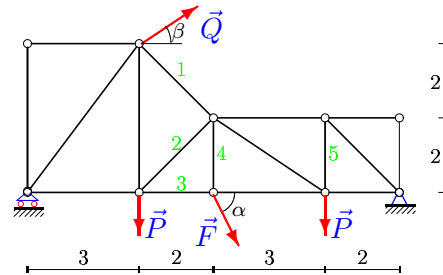
*Свиридов Георгий*



$P = 10 \text{ кН}, Q = 60 \text{ кН}, F = 17 \text{ кН},$   
 $\alpha = 60^\circ, \beta = 30^\circ.$

**Задача S-5.20.**

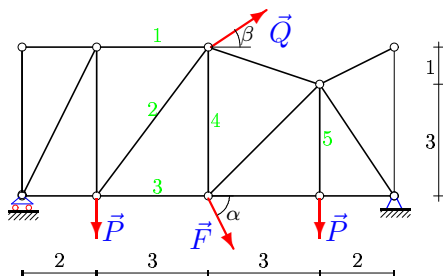
*Скляр Никита*



$P = 90 \text{ кН}, Q = 50 \text{ кН}, F = 30 \text{ кН},$   
 $\alpha = 55^\circ, \beta = 30^\circ.$

**Задача S-5.21.**

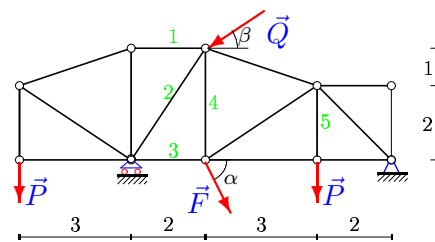
*Телицын Данил*



$P = 20 \text{ кН}, Q = 40 \text{ кН}, F = 14 \text{ кН},$   
 $\alpha = 65^\circ, \beta = 30^\circ.$

**Задача S-5.22.**

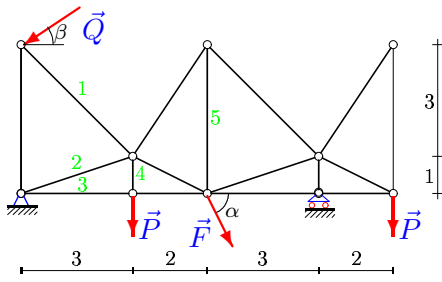
*Ковалев Д.*



$P = 70 \text{ кН}, Q = 70 \text{ кН}, F = 51 \text{ кН},$   
 $\alpha = 45^\circ, \beta = 45^\circ.$

**Задача S-5.23.**

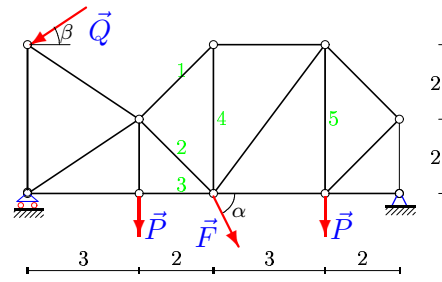
*Тракин Михаил*



$P = 40 \text{ кН}, Q = 50 \text{ кН}, F = 25 \text{ кН},$   
 $\alpha = 75^\circ, \beta = 15^\circ.$

**Задача S-5.24.**

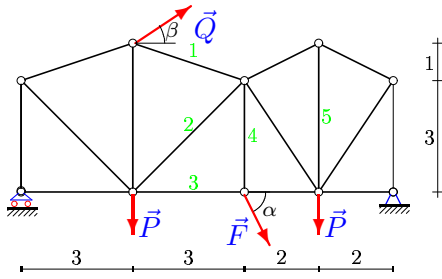
*Шибин Руслан*



$P = 70 \text{ кН}, Q = 50 \text{ кН}, F = 23 \text{ кН},$   
 $\alpha = 45^\circ, \beta = 30^\circ.$

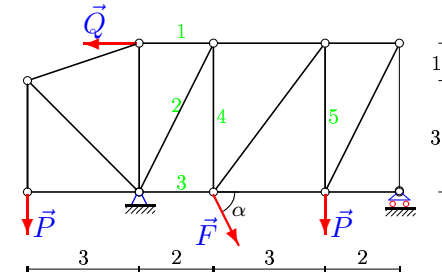
**Задача S-5.25.**

*Штыленко Антон*



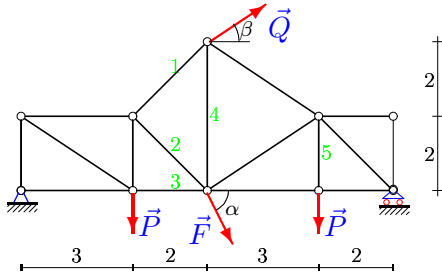
$P = 30 \text{ кН}, Q = 80 \text{ кН}, F = 54 \text{ кН},$   
 $\alpha = 70^\circ, \beta = 30^\circ.$

**Задача S-5.26.**



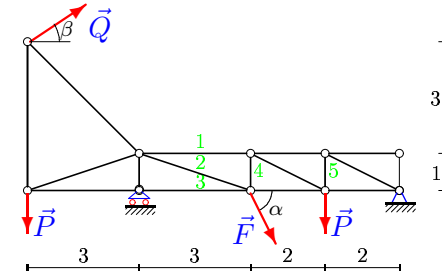
$P = 70 \text{ кН}, Q = 30 \text{ кН},$   
 $F = 34 \text{ кН}, \alpha = 45^\circ.$

**Задача S-5.27.**



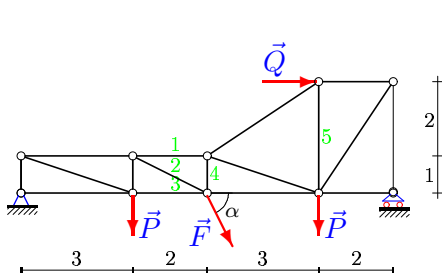
$P = 90 \text{ кН}, Q = 70 \text{ кН}, F = 32 \text{ кН},$   
 $\alpha = 55^\circ, \beta = 15^\circ.$

**Задача S-5.28.**



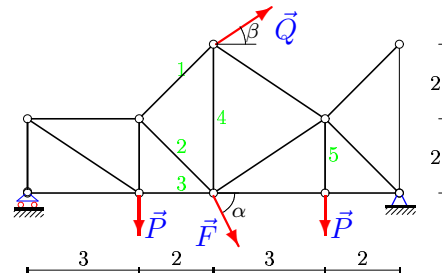
$P = 30 \text{ кН}, Q = 80 \text{ кН}, F = 42 \text{ кН},$   
 $\alpha = 70^\circ, \beta = 45^\circ.$

**Задача S-5.29.**



$P = 10 \text{ кН}, Q = 90 \text{ кН},$   
 $F = 47 \text{ кН}, \alpha = 60^\circ.$

**Задача S-5.30.**



$P = 60 \text{ кН}, Q = 80 \text{ кН}, F = 22 \text{ кН},$   
 $\alpha = 40^\circ, \beta = 30^\circ.$