

# Структурные модели среды

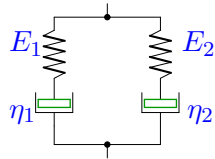
Вывести определяющее уравнение среды.

Модули упругости и коэффициенты вязкости даны в безразмерном виде. В ответах приведены коэффициенты уравнения

$$A_2\ddot{\sigma} + A_1\dot{\sigma} + A_0\sigma = B_2\ddot{\epsilon} + B_1\dot{\epsilon} + B_0\epsilon.$$

**Задача М2.1.**

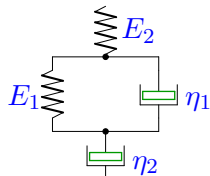
*Акалаев Эмран*



$$E_1 = 2, E_2 = 1, \eta_1 = 2, \eta_2 = 4.$$

**Задача М2.2.**

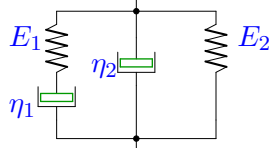
*Бровка Татьяна*



$$E_1 = 1, E_2 = 2, \eta_1 = 1, \eta_2 = 2.$$

**Задача М2.3.**

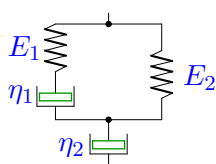
*Бутняков Марк*



$$E_1 = 2, E_2 = 3, \eta_1 = 2, \eta_2 = 4.$$

**Задача М2.4.**

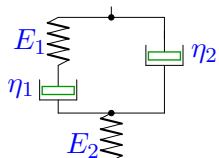
*Васильева Наталья*



$$E_1 = 2, E_2 = 1, \eta_1 = 1, \eta_2 = 4.$$

**Задача М2.5.**

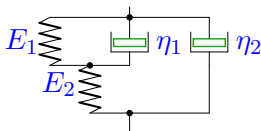
*Величко Валерия*



$$E_1 = 2, E_2 = 3, \eta_1 = 1, \eta_2 = 2.$$

**Задача М2.6.**

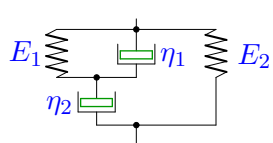
*Глухов Олег*



$$E_1 = 1, E_2 = 3, \eta_1 = 2, \eta_2 = 4.$$

**Задача М2.7.**

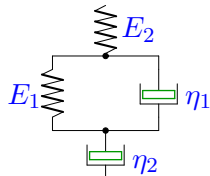
*Гущин Алексей*



$$E_1 = 1, E_2 = 3, \eta_1 = 2, \eta_2 = 4.$$

**Задача М2.8.**

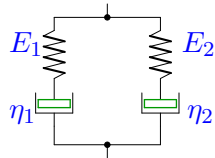
*Зеленецкий Кирилл*



$$E_1 = 1, E_2 = 2, \eta_1 = 1, \eta_2 = 2.$$

**Задача М2.9.**

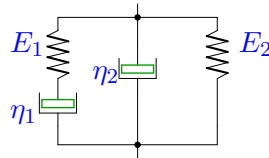
*Зинин Иван*



$$E_1 = 2, E_2 = 1, \eta_1 = 1, \eta_2 = 2.$$

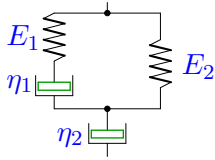
**Задача М2.10.**

*Иванова Анна*



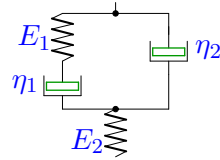
$$E_1 = 1, E_2 = 3, \eta_1 = 2, \eta_2 = 4.$$

**Задача M2.11.** *Кухарук Екатерина*



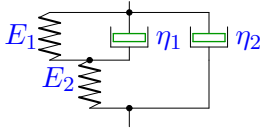
$$E_1 = 1, E_2 = 2, \eta_1 = 2, \eta_2 = 4.$$

**Задача M2.12.** *Лобус Александр*



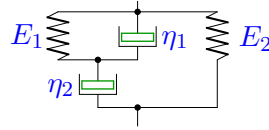
$$E_1 = 1, E_2 = 3, \eta_1 = 1, \eta_2 = 2.$$

**Задача M2.13.** *Лутченкова Екатерина*



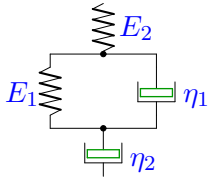
$$E_1 = 2, E_2 = 1, \eta_1 = 2, \eta_2 = 1.$$

**Задача M2.14.** *Лысенко Наталья*



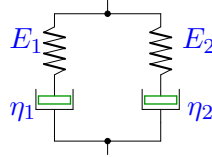
$$E_1 = 1, E_2 = 2, \eta_1 = 2, \eta_2 = 4.$$

**Задача M2.15.** *Маругина Ксения*



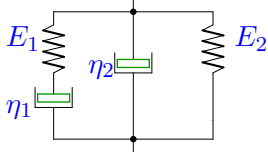
$$E_1 = 2, E_2 = 3, \eta_1 = 2, \eta_2 = 1.$$

**Задача M2.16.** *Мишонкова Ксения*



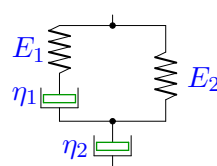
$$E_1 = 1, E_2 = 2, \eta_1 = 1, \eta_2 = 4.$$

**Задача M2.17.** *Новиков Семён*



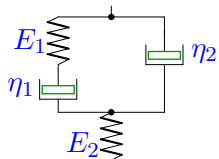
$$E_1 = 2, E_2 = 1, \eta_1 = 1, \eta_2 = 2.$$

**Задача M2.18.** *Озик Дарья*



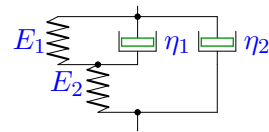
$$E_1 = 2, E_2 = 1, \eta_1 = 2, \eta_2 = 4.$$

**Задача M2.19.** *Особов Алексей*



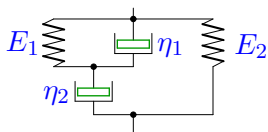
$$E_1 = 1, E_2 = 3, \eta_1 = 1, \eta_2 = 2.$$

**Задача M2.20.** *Панченков Роман*



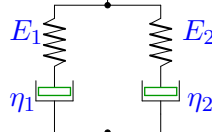
$$E_1 = 2, E_2 = 3, \eta_1 = 2, \eta_2 = 4.$$

**Задача M2.21.** *Писоцкая Наталья*



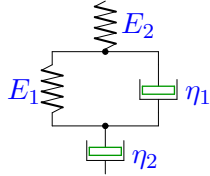
$$E_1 = 2, E_2 = 1, \eta_1 = 2, \eta_2 = 1.$$

**Задача M2.22.** *Самсонов Евгений*



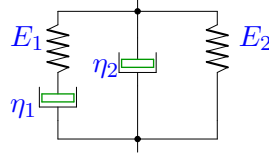
$$E_1 = 1, E_2 = 3, \eta_1 = 2, \eta_2 = 4.$$

**Задача M2.23.** *Скворцова Светлана*



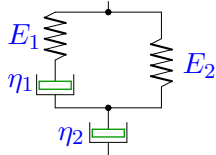
$$E_1 = 2, E_2 = 1, \eta_1 = 1, \eta_2 = 4.$$

**Задача M2.24.** *Стамболин Станислав*



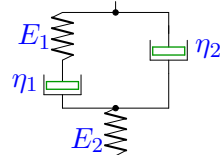
$$E_1 = 1, E_2 = 2, \eta_1 = 2, \eta_2 = 4.$$

**Задача M2.25.** *Ткачук Георгий*



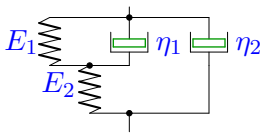
$$E_1 = 1, E_2 = 2, \eta_1 = 2, \eta_2 = 1.$$

**Задача M2.26.** *Трифонов Илья*



$$E_1 = 2, E_2 = 1, \eta_1 = 1, \eta_2 = 2.$$

**Задача M2.27.** *ЩербакOVA Анастасия*



$$E_1 = 1, E_2 = 2, \eta_1 = 1, \eta_2 = 4.$$