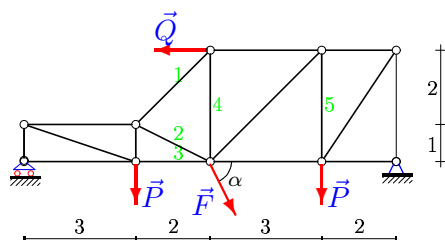


Расчет фермы (стойки)

Кирсанов М.Н. **Решебник. Теоретическая механика**/Под ред. А. И. Кириллова.—
 М.: ФИЗМАТЛИТ, 2008. — 384 с. (с.37.)

Задача S-5.1.

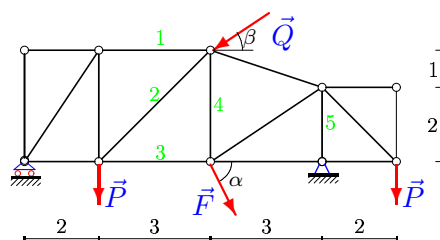
Акалаев Эмран



$P = 80 \text{ кН}, Q = 50 \text{ кН},$
 $F = 38 \text{ кН}, \alpha = 50^\circ.$

Задача S-5.2.

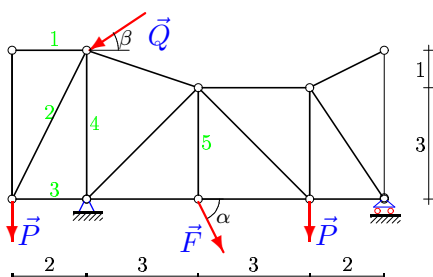
Бровка Татьяна



$P = 80 \text{ кН}, Q = 60 \text{ кН}, F = 19 \text{ кН},$
 $\alpha = 50^\circ, \beta = 45^\circ.$

Задача S-5.3.

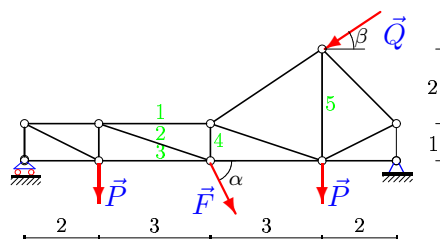
Бутняков Марк



$P = 40 \text{ кН}, Q = 50 \text{ кН}, F = 19 \text{ кН},$
 $\alpha = 75^\circ, \beta = 30^\circ.$

Задача S-5.4.

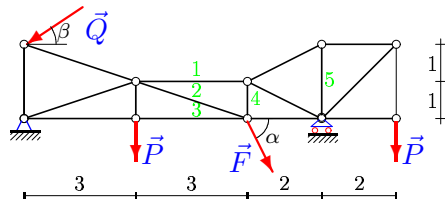
Васильева Наталья



$P = 20 \text{ кН}, Q = 60 \text{ кН}, F = 25 \text{ кН},$
 $\alpha = 65^\circ, \beta = 30^\circ.$

Задача S-5.5.

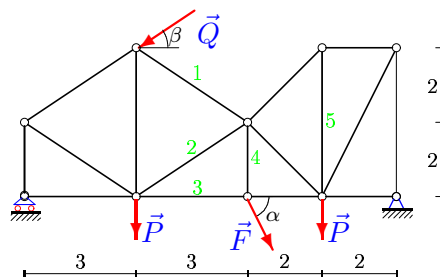
Величко Валерия



$P = 80 \text{ кН}, Q = 40 \text{ кН}, F = 35 \text{ кН},$
 $\alpha = 50^\circ, \beta = 15^\circ.$

Задача S-5.6.

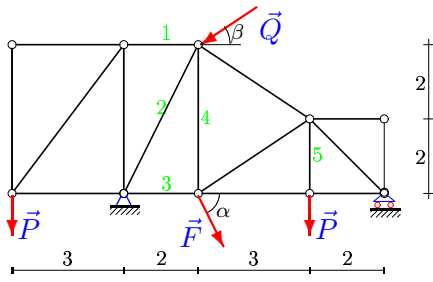
Глухов Олег



$P = 10 \text{ кН}, Q = 60 \text{ кН}, F = 55 \text{ кН},$
 $\alpha = 60^\circ, \beta = 30^\circ.$

Задача S-5.7.

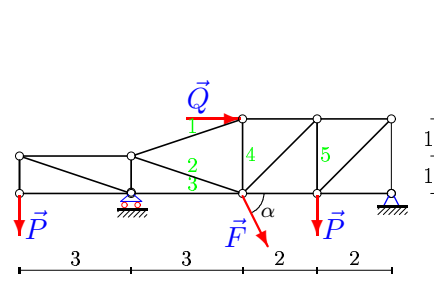
Гущин Алексей



$P = 20 \text{ кН}, Q = 50 \text{ кН}, F = 43 \text{ кН},$
 $\alpha = 65^\circ, \beta = 30^\circ.$

Задача S-5.8.

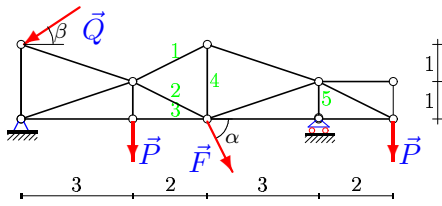
Зеленецкий Кирилл



$P = 30 \text{ кН}, Q = 50 \text{ кН},$
 $F = 53 \text{ кН}, \alpha = 70^\circ.$

Задача S-5.9.

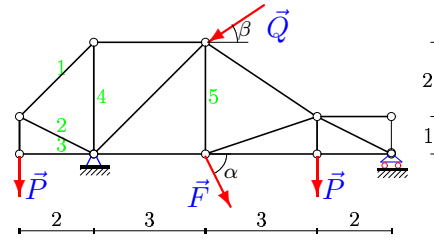
Зинин Иван



$P = 90 \text{ кН}, Q = 60 \text{ кН}, F = 49 \text{ кН},$
 $\alpha = 55^\circ, \beta = 15^\circ.$

Задача S-5.10.

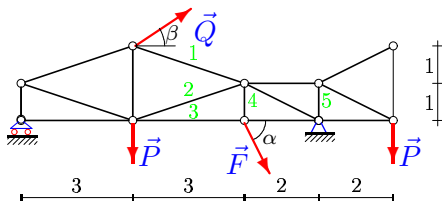
Иванова Алина



$P = 50 \text{ кН}, Q = 90 \text{ кН}, F = 17 \text{ кН},$
 $\alpha = 35^\circ, \beta = 30^\circ.$

Задача S-5.11.

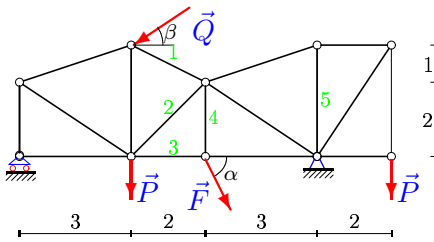
Кухарук Екатерина



$P = 60 \text{ кН}, Q = 90 \text{ кН}, F = 44 \text{ кН},$
 $\alpha = 40^\circ, \beta = 45^\circ.$

Задача S-5.12.

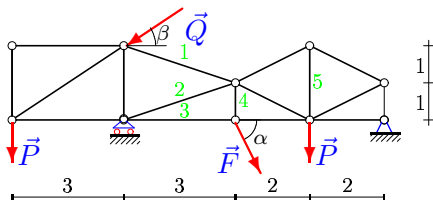
Лобус Александр



$P = 10 \text{ кН}, Q = 30 \text{ кН}, F = 35 \text{ кН},$
 $\alpha = 60^\circ, \beta = 45^\circ.$

Задача S-5.13.

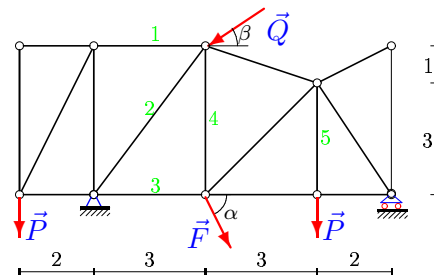
Лутченкова Екатерина



$P = 80 \text{ кН}, Q = 30 \text{ кН}, F = 55 \text{ кН},$
 $\alpha = 50^\circ, \beta = 45^\circ.$

Задача S-5.14.

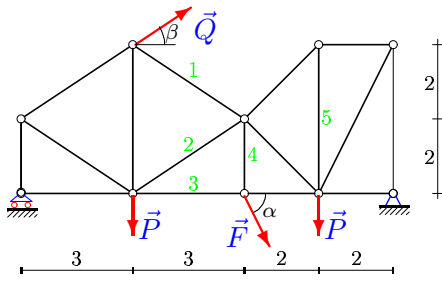
Лысенко Наталья



$P = 10 \text{ кН}, Q = 90 \text{ кН}, F = 29 \text{ кН},$
 $\alpha = 60^\circ, \beta = 30^\circ.$

Задача S-5.15.

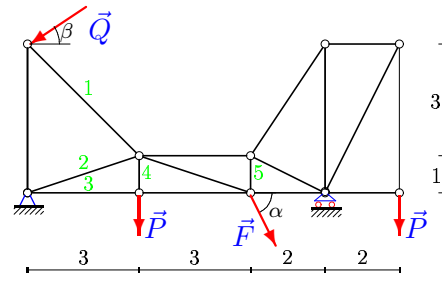
Маругина Ксения



$P = 60 \text{ кН}, Q = 50 \text{ кН}, F = 58 \text{ кН},$
 $\alpha = 40^\circ, \beta = 30^\circ.$

Задача S-5.16.

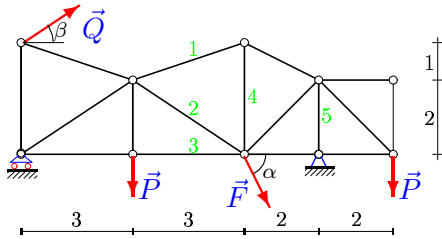
Мишонкова Ксения



$P = 50 \text{ кН}, Q = 90 \text{ кН}, F = 59 \text{ кН},$
 $\alpha = 35^\circ, \beta = 15^\circ.$

Задача S-5.17.

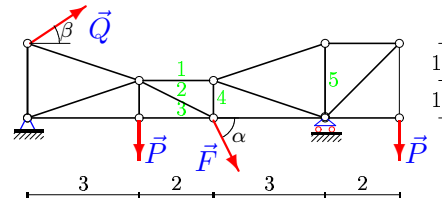
Новиков Семён



$P = 10 \text{ кН}, Q = 60 \text{ кН}, F = 36 \text{ кН},$
 $\alpha = 60^\circ, \beta = 45^\circ.$

Задача S-5.18.

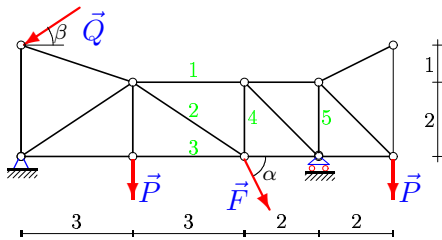
Озик Дарья



$P = 20 \text{ кН}, Q = 40 \text{ кН}, F = 36 \text{ кН},$
 $\alpha = 65^\circ, \beta = 15^\circ.$

Задача S-5.19.

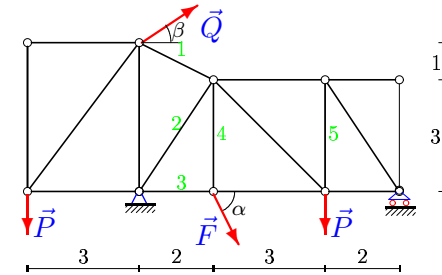
Особов Алексей



$P = 60 \text{ кН}, Q = 90 \text{ кН}, F = 59 \text{ кН},$
 $\alpha = 40^\circ, \beta = 15^\circ.$

Задача S-5.20.

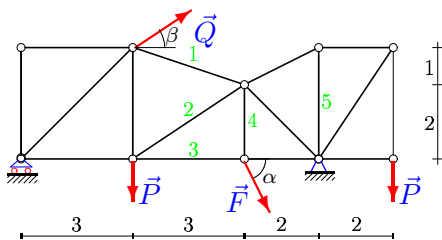
Панченков Роман



$P = 30 \text{ кН}, Q = 50 \text{ кН}, F = 40 \text{ кН},$
 $\alpha = 70^\circ, \beta = 30^\circ.$

Задача S-5.21.

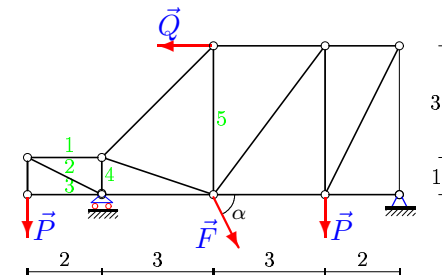
Писоцкая Наталья



$P = 10 \text{ кН}, Q = 50 \text{ кН}, F = 40 \text{ кН},$
 $\alpha = 60^\circ, \beta = 45^\circ.$

Задача S-5.22.

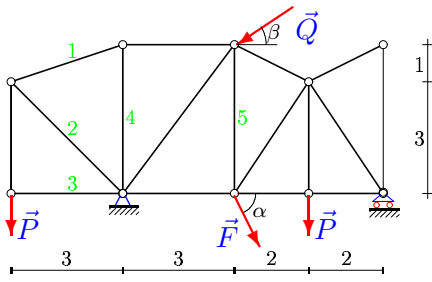
Самсонов Евгений



$P = 50 \text{ кН}, Q = 50 \text{ кН},$
 $F = 20 \text{ кН}, \alpha = 35^\circ.$

Задача S-5.23.

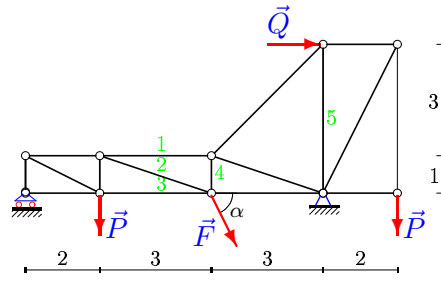
Скворцова Светлана



$P = 40 \text{ кН}, Q = 80 \text{ кН}, F = 37 \text{ кН},$
 $\alpha = 75^\circ, \beta = 30^\circ.$

Задача S-5.24.

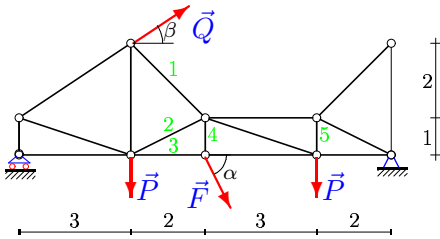
Стамболян Станислав



$P = 10 \text{ кН}, Q = 70 \text{ кН},$
 $F = 37 \text{ кН}, \alpha = 60^\circ.$

Задача S-5.25.

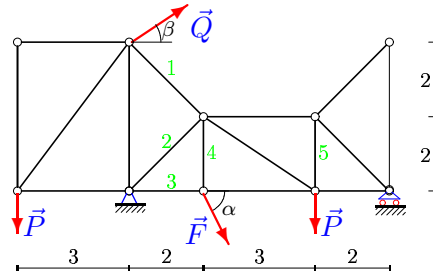
Ткачук Георгий



$P = 30 \text{ кН}, Q = 80 \text{ кН}, F = 38 \text{ кН},$
 $\alpha = 70^\circ, \beta = 30^\circ.$

Задача S-5.26.

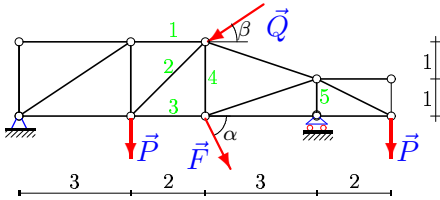
Трифонов Илья



$P = 10 \text{ кН}, Q = 70 \text{ кН}, F = 42 \text{ кН},$
 $\alpha = 60^\circ, \beta = 30^\circ.$

Задача S-5.27.

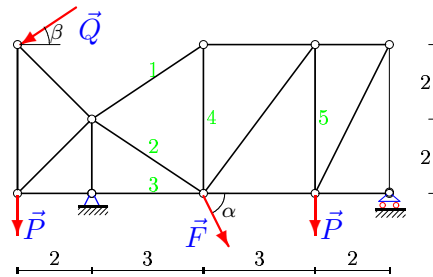
Щербакова Анастасия



$P = 20 \text{ кН}, Q = 90 \text{ кН}, F = 21 \text{ кН},$
 $\alpha = 65^\circ, \beta = 15^\circ.$

Задача S-5.28.

*



$P = 30 \text{ кН}, Q = 40 \text{ кН}, F = 39 \text{ кН},$
 $\alpha = 70^\circ, \beta = 30^\circ.$