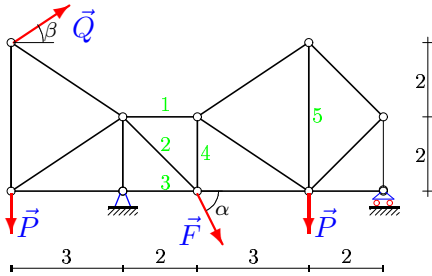


Расчет фермы (стойки)

Кирсанов М.Н. **Решебник. Теоретическая механика**/Под ред. А. И. Кириллова.–
М.: ФИЗМАТЛИТ, 2008. — 384 с. (с.37.)

Задача S-5.1.

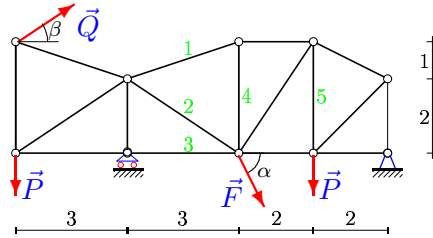
Ванин Дмитрий



$P = 10$ кН, $Q = 60$ кН, $F = 32$ кН,
 $\alpha = 60^\circ$, $\beta = 30^\circ$.

Задача S-5.2.

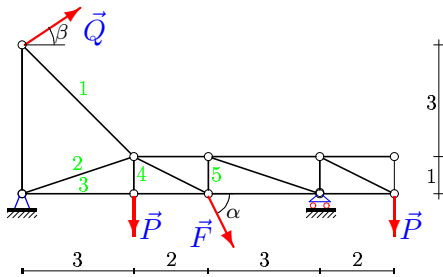
Герасимов Егор



$P = 10$ кН, $Q = 40$ кН, $F = 58$ кН,
 $\alpha = 60^\circ$, $\beta = 45^\circ$.

Задача S-5.3.

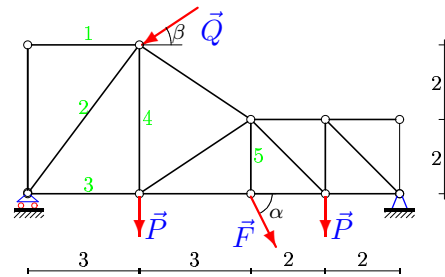
Григорьева Анастасия



$P = 40$ кН, $Q = 30$ кН, $F = 22$ кН,
 $\alpha = 75^\circ$, $\beta = 15^\circ$.

Задача S-5.4.

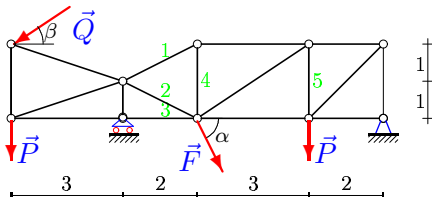
Данилкина Юлия



$P = 40$ кН, $Q = 80$ кН, $F = 45$ кН,
 $\alpha = 75^\circ$, $\beta = 30^\circ$.

Задача S-5.5.

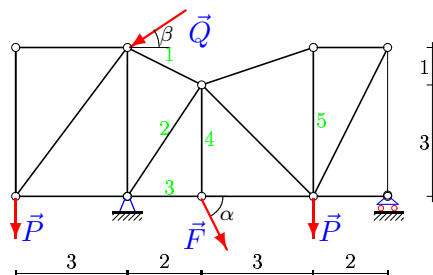
Жмуров Михаил



$P = 80$ кН, $Q = 40$ кН, $F = 41$ кН,
 $\alpha = 50^\circ$, $\beta = 45^\circ$.

Задача S-5.6.

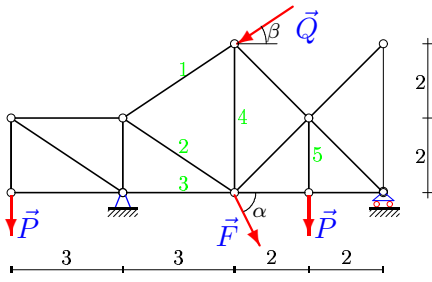
Ильченко Арина



$P = 20$ кН, $Q = 60$ кН, $F = 31$ кН,
 $\alpha = 65^\circ$, $\beta = 30^\circ$.

Задача S-5.7.

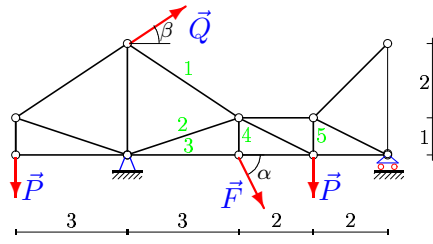
Исакова Надежда



$P = 30$ кН, $Q = 60$ кН, $F = 59$ кН,
 $\alpha = 70^\circ$, $\beta = 30^\circ$.

Задача S-5.8.

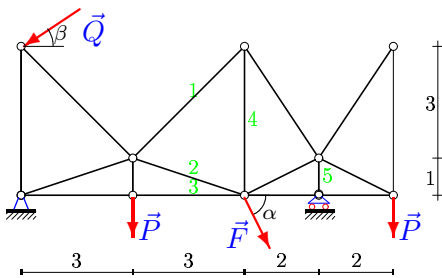
Исамидинова Мария



$P = 90$ кН, $Q = 60$ кН, $F = 54$ кН,
 $\alpha = 55^\circ$, $\beta = 30^\circ$.

Задача S-5.9.

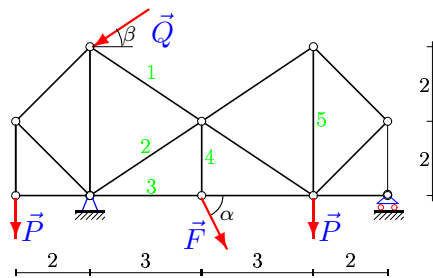
Кислюк Татьяна



$P = 20$ кН, $Q = 30$ кН, $F = 57$ кН,
 $\alpha = 65^\circ$, $\beta = 15^\circ$.

Задача S-5.10.

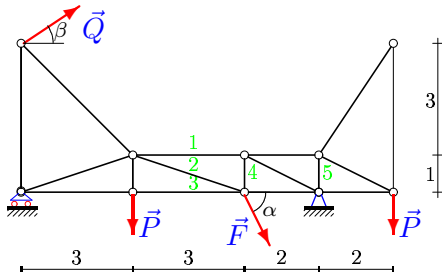
Красикова Екатерина



$P = 70$ кН, $Q = 60$ кН, $F = 33$ кН,
 $\alpha = 45^\circ$, $\beta = 30^\circ$.

Задача S-5.11.

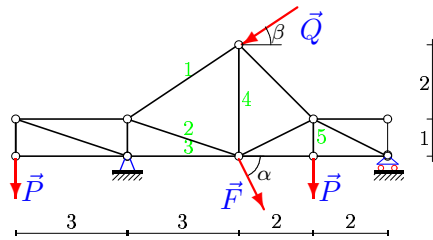
Курманова Полина



$P = 20$ кН, $Q = 30$ кН, $F = 60$ кН,
 $\alpha = 65^\circ$, $\beta = 45^\circ$.

Задача S-5.12.

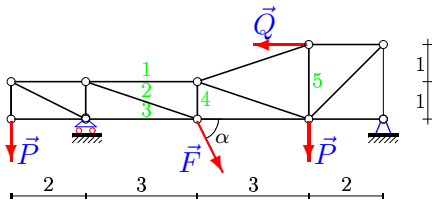
Левченков Дмитрий



$P = 80$ кН, $Q = 70$ кН, $F = 47$ кН,
 $\alpha = 50^\circ$, $\beta = 30^\circ$.

Задача S-5.13.

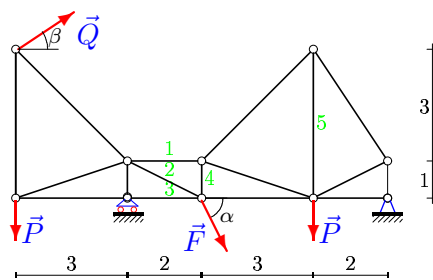
Лейченко Дарья



$P = 70$ кН, $Q = 90$ кН,
 $F = 26$ кН, $\alpha = 45^\circ$.

Задача S-5.14.

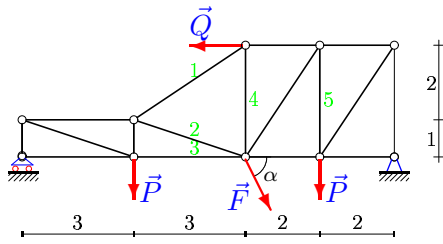
Насибуллина Анастасия



$P = 90$ кН, $Q = 70$ кН, $F = 30$ кН,
 $\alpha = 55^\circ$, $\beta = 45^\circ$.

Задача S-5.15.

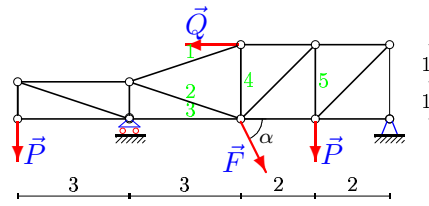
Плеханов Макар



$P = 60 \text{ кН}, Q = 50 \text{ кН},$
 $F = 34 \text{ кН}, \alpha = 40^\circ.$

Задача S-5.16.

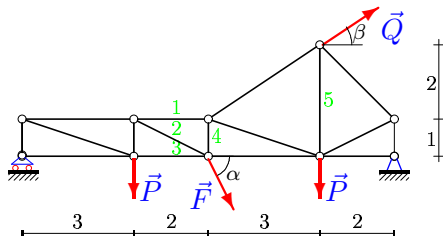
Поддубная Таисия



$P = 30 \text{ кН}, Q = 50 \text{ кН},$
 $F = 36 \text{ кН}, \alpha = 70^\circ.$

Задача S-5.17.

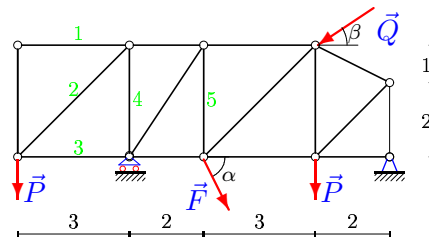
Савилова Алиса



$P = 30 \text{ кН}, Q = 70 \text{ кН}, F = 32 \text{ кН},$
 $\alpha = 70^\circ, \beta = 30^\circ.$

Задача S-5.18.

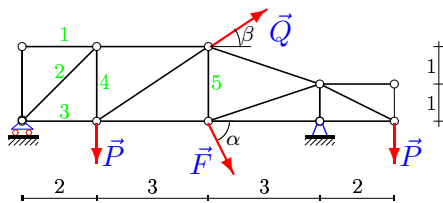
Сарибежян Виолетта



$P = 40 \text{ кН}, Q = 80 \text{ кН}, F = 37 \text{ кН},$
 $\alpha = 75^\circ, \beta = 45^\circ.$

Задача S-5.19.

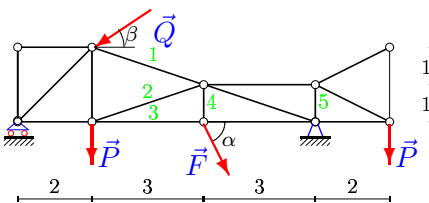
Соловьёва Полина



$P = 50 \text{ кН}, Q = 70 \text{ кН}, F = 32 \text{ кН},$
 $\alpha = 35^\circ, \beta = 45^\circ.$

Задача S-5.20.

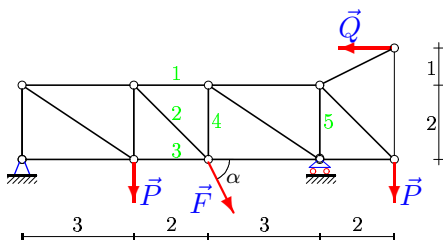
Суд Илья Борисович



$P = 70 \text{ кН}, Q = 50 \text{ кН}, F = 13 \text{ кН},$
 $\alpha = 45^\circ, \beta = 45^\circ.$

Задача S-5.21.

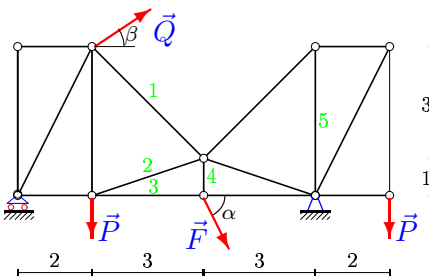
Суслина Лидия



$P = 80 \text{ кН}, Q = 40 \text{ кН},$
 $F = 32 \text{ кН}, \alpha = 50^\circ.$

Задача S-5.22.

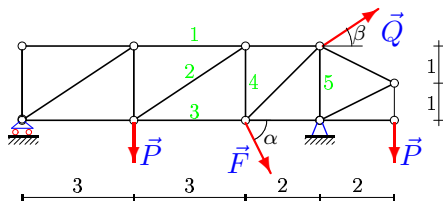
Тимофеева Марина



$P = 80 \text{ кН}, Q = 50 \text{ кН}, F = 28 \text{ кН},$
 $\alpha = 50^\circ, \beta = 45^\circ.$

Задача S-5.23.

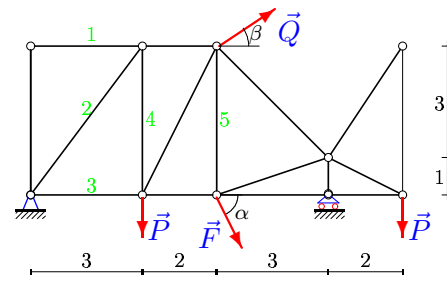
Феокистов Алексей



$P = 70 \text{ кН}, Q = 30 \text{ кН}, F = 58 \text{ кН},$
 $\alpha = 45^\circ, \beta = 45^\circ.$

Задача S-5.24.

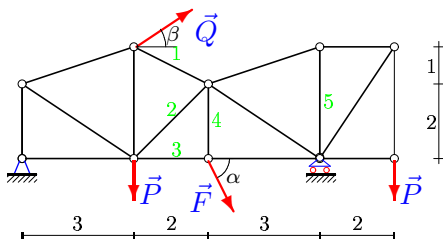
Цурканенко Данила



$P = 40 \text{ кН}, Q = 90 \text{ кН}, F = 30 \text{ кН},$
 $\alpha = 75^\circ, \beta = 15^\circ.$

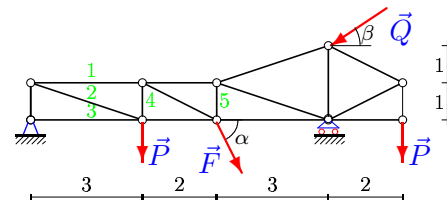
Задача S-5.25.

Чащин Максим



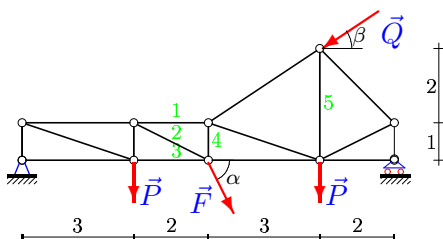
$P = 20 \text{ кН}, Q = 60 \text{ кН}, F = 48 \text{ кН},$
 $\alpha = 65^\circ, \beta = 15^\circ.$

Задача S-5.26.



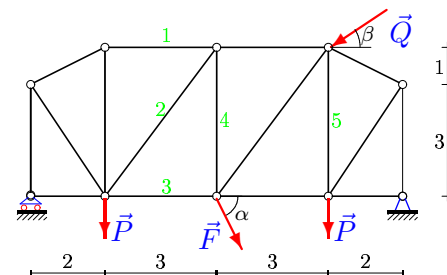
$P = 40 \text{ кН}, Q = 40 \text{ кН}, F = 45 \text{ кН},$
 $\alpha = 75^\circ, \beta = 15^\circ.$

Задача S-5.27.



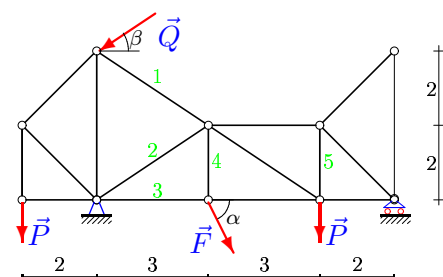
$P = 80 \text{ кН}, Q = 70 \text{ кН}, F = 37 \text{ кН},$
 $\alpha = 50^\circ, \beta = 15^\circ.$

Задача S-5.28.



$P = 10 \text{ кН}, Q = 50 \text{ кН}, F = 19 \text{ кН},$
 $\alpha = 60^\circ, \beta = 30^\circ.$

Задача S-5.29.



$P = 60 \text{ кН}, Q = 30 \text{ кН}, F = 37 \text{ кН},$
 $\alpha = 40^\circ, \beta = 30^\circ.$