

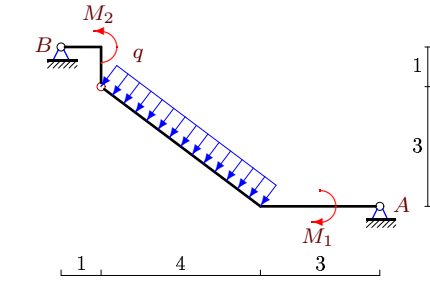
# Простая составная рама с распределенной нагрузкой

Конструкция состоит из двух частей, соединенных шарнирно. Определить реакции опор (в кН). Размеры даны в метрах, моменты в кНм, распределенные нагрузки в кН/м.

Кирсанов М.Н. Задачи по теоретической механике с решениями в **Maple 11.** – М.: ФИЗМАТЛИТ, 2010. – 264 с. (с.15)

Задача S-33.1.

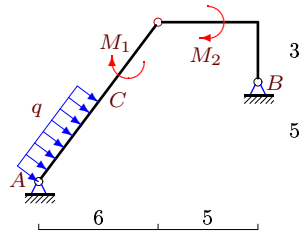
8



$$q = 4, M_1 = 7, M_2 = 21.$$

Задача S-33.2.

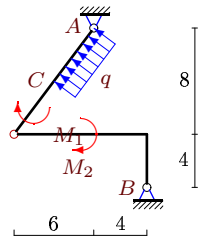
8



$$AC = 5, q = 2, M_1 = 17, M_2 = 35.$$

Задача S-33.3.

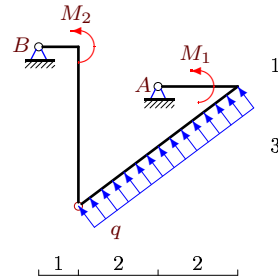
8



$$AC = 5, q = 2, M_1 = 127, M_2 = 76.$$

Задача S-33.4.

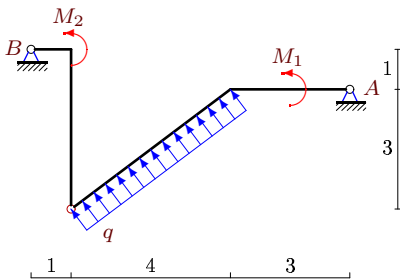
8



$$q = 8, M_1 = 5, M_2 = 111.$$

Задача S-33.5.

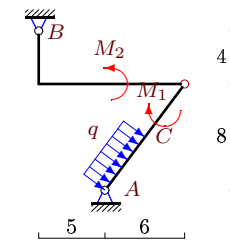
8



$$q = 4, M_1 = 3, M_2 = 44.$$

Задача S-33.6.

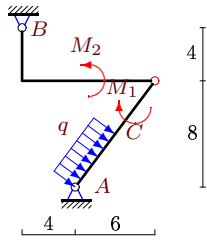
8



$$AC = 5, q = 2, M_1 = 187, M_2 = 90.$$

Задача S-33.7.

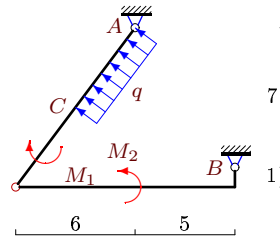
8



$AC = 5, q = 2, M_1 = 127, M_2 = 132.$

Задача S-33.8.

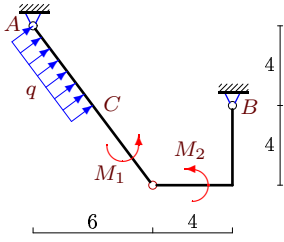
8



$AC = 5, q = 4, M_1 = 68, M_2 = 312.$

Задача S-33.9.

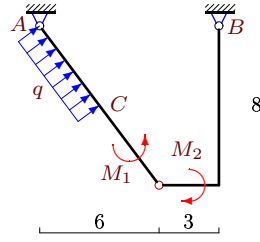
8



$AC = 5, q = 2, M_1 = 47, M_2 = 20.$

Задача S-33.10.

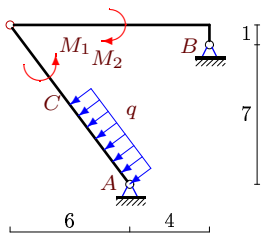
8



$AC = 5, q = 2, M_1 = 3, M_2 = 82.$

Задача S-33.11.

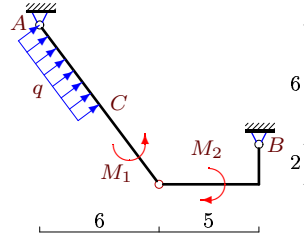
8



$AC = 5, q = 2, M_1 = 1, M_2 = 31.$

Задача S-33.12.

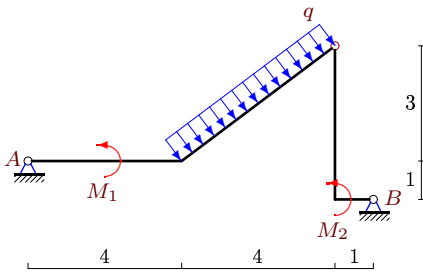
8



$AC = 5, q = 2, M_1 = 127, M_2 = 38.$

Задача S-33.13.

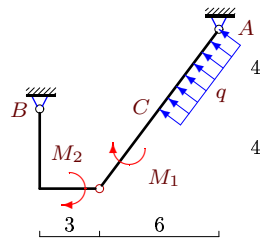
8



$q = 2, M_1 = 7, M_2 = 20.$

Задача S-33.14.

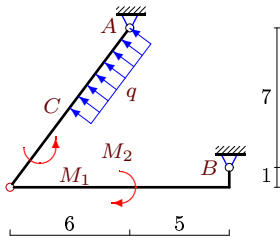
8



$AC = 5, q = 2, M_1 = 171, M_2 = 82.$

Задача S-33.15.

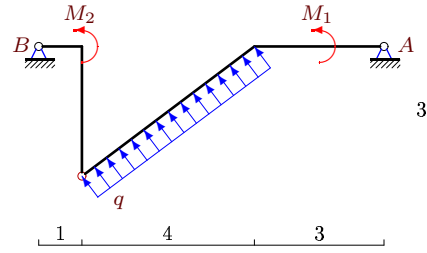
8



$AC = 5, q = 2, M_1 = 7, M_2 = 8.$

Задача S-33.16.

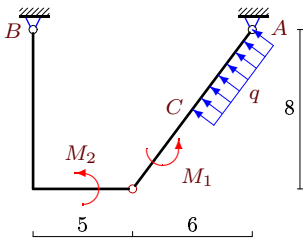
8



$q = 4, M_1 = 3, M_2 = 31.$

Задача S-33.17.

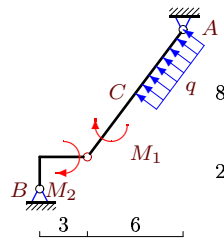
8



$AC = 5, q = 2, M_1 = 13, M_2 = 78.$

Задача S-33.18.

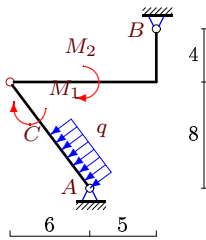
8



$AC = 5, q = 2, M_1 = 51, M_2 = 46.$

Задача S-33.19.

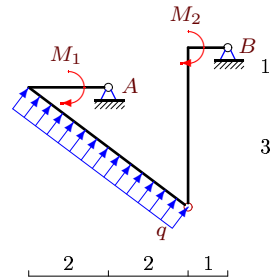
8



$AC = 5, q = 2, M_1 = 37, M_2 = 146.$

Задача S-33.20.

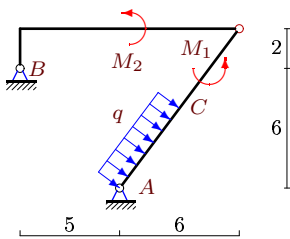
8



$q = 4, M_1 = 3, M_2 = 53.$

Задача S-33.21.

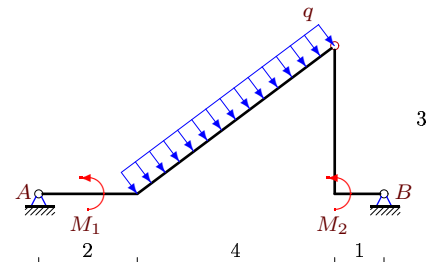
8



$AC = 5, q = 2, M_1 = 1, M_2 = 120.$

Задача S-33.22.

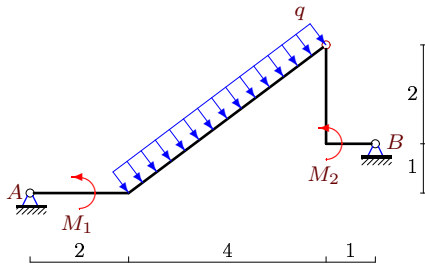
8



$q = 6, M_1 = 3, M_2 = 43.$

Задача S-33.23.

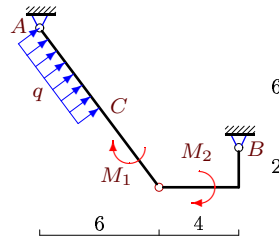
8



$q = 6, M_1 = 3, M_2 = 20.$

Задача S-33.24.

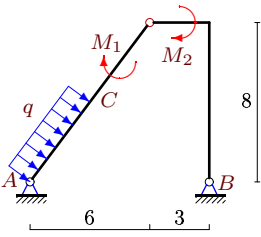
8



$AC = 5, q = 2, M_1 = 13, M_2 = 36.$

Задача S-33.25.

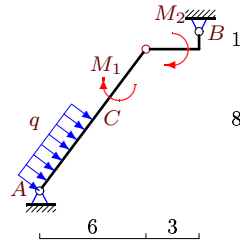
8



$AC = 5, q = 2, M_1 = 219, M_2 = 26.$

Задача S-33.26.

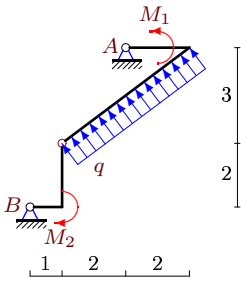
8



$AC = 5, q = 2, M_1 = 39, M_2 = 62.$

Задача S-33.27.

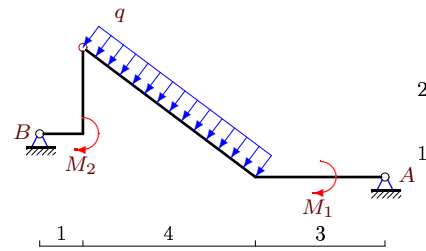
8



$q = 8, M_1 = 5, M_2 = 28.$

Задача S-33.28.

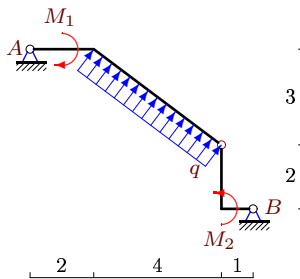
8



$q = 4, M_1 = 2, M_2 = 13.$

Задача S-33.29.

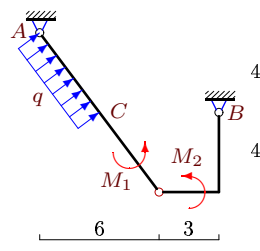
8



$q = 6, M_1 = 3, M_2 = 47.$

Задача S-33.30.

8



$AC = 5, q = 2, M_1 = 171, M_2 = 82.$

S-33

Ответы.

Простая составная рама с распределенной нагрузкой 12.02.2015

№	$X_A$	$Y_A$	$X_B$	$Y_B$
1	-2	9	14	7
2	-8	-1	0	7
3	-11	-6	19	0
4	1	-51	23	19
5	-1	-8	13	-8
6	8	-8	-16	14
7	-1	-10	-7	16
8	23	17	-7	-29
9	-5	2	-3	-8
10	0	-12	-8	6
11	7	3	1	3
12	11	-6	-19	0
13	0	4	-6	4
14	6	24	2	-30
15	5	-7	3	1
16	-1	-8	13	-8
17	2	-12	6	6
18	12	12	-4	-18
19	17	-4	-9	10
20	-1	-25	-11	9
21	-14	-6	6	12
22	0	13	-18	11
23	-2	12	-16	12
24	-2	-12	-6	6
25	0	-24	-8	30
26	-18	-18	10	24
27	-1	-54	25	22
28	1	7	11	9
29	0	-13	-18	-11
30	-6	24	-2	-30

S-33 файл о33s8A