

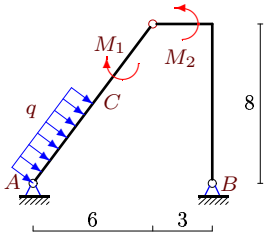
# Простая составная рама с распределенной нагрузкой

Конструкция состоит из двух частей, соединенных шарнирно. Определить реакции опор (в кН). Размеры даны в метрах, моменты в кНм, распределенные нагрузки в кН/м.

Кирсанов М.Н. Задачи по теоретической механике с решениями в Maple 11. – М.: ФИЗМАТЛИТ, 2010. – 264 с. (с.15)

**Задача S-33.1.**

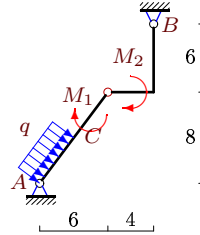
9



$$AC = 5, q = 4, M_1 = 222, M_2 = 20.$$

**Задача S-33.2.**

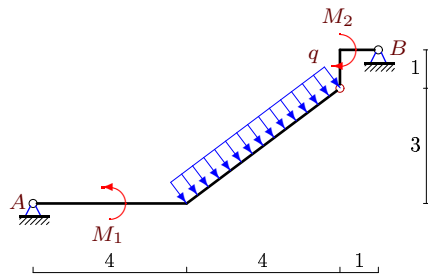
9



$$AC = 5, q = 2, M_1 = 71, M_2 = 68.$$

**Задача S-33.3.**

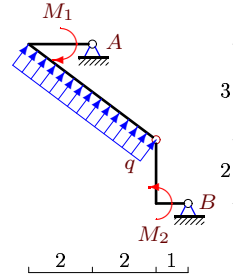
9



$$q = 2, M_1 = 5, M_2 = 9.$$

**Задача S-33.4.**

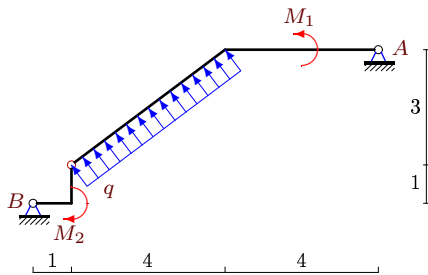
9



$$q = 8, M_1 = 5, M_2 = 28.$$

**Задача S-33.5.**

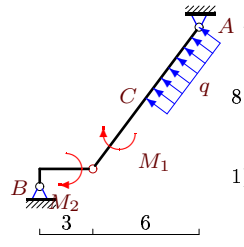
9



$$q = 2, M_1 = 2, M_2 = 10.$$

**Задача S-33.6.**

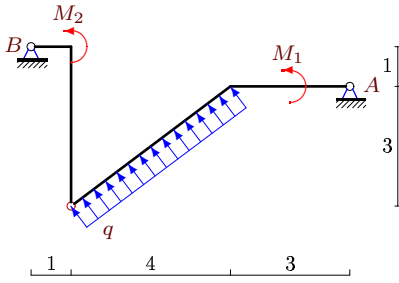
9



$$AC = 5, q = 2, M_1 = 111, M_2 = 8.$$

Задача S-33.7.

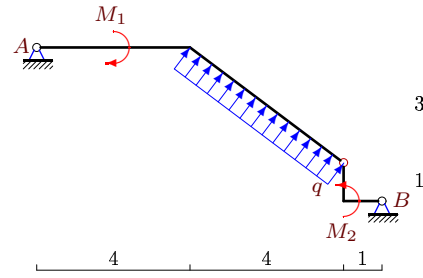
9



$q = 2, M_1 = 3, M_2 = 20.$

Задача S-33.8.

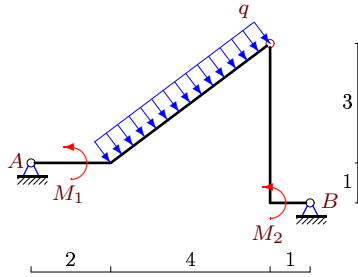
9



$q = 2, M_1 = 2, M_2 = 10.$

Задача S-33.9.

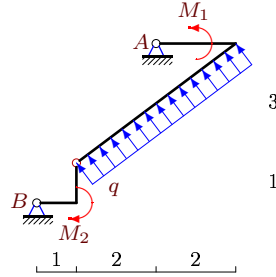
9



$q = 6, M_1 = 6, M_2 = 66.$

Задача S-33.10.

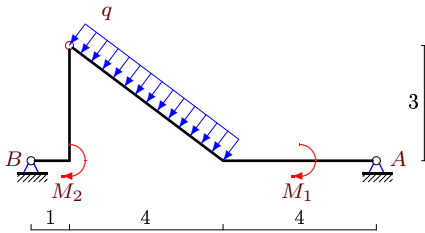
9



$q = 2, M_1 = 1, M_2 = 1.$

Задача S-33.11.

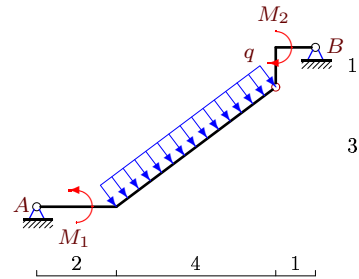
9



$q = 2, M_1 = 4, M_2 = 17.$

Задача S-33.12.

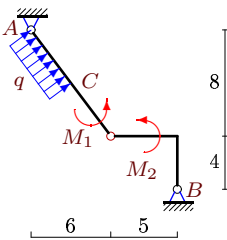
9



$q = 6, M_1 = 3, M_2 = 29.$

Задача S-33.13.

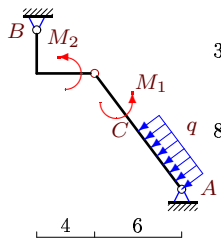
9



$AC = 5, q = 4, M_1 = 134, M_2 = 92.$

Задача S-33.14.

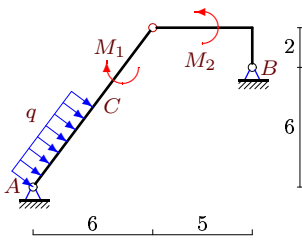
9



$AC = 5, q = 4, M_1 = 136, M_2 = 68.$

Задача S-33.15.

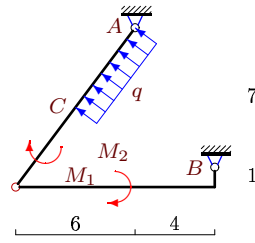
9



$AC = 5, q = 2, M_1 = 23, M_2 = 38.$

Задача S-33.16.

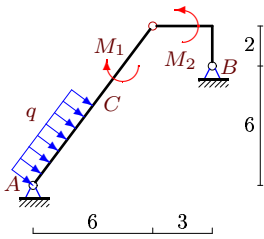
9



$AC = 5, q = 2, M_1 = 1, M_2 = 6.$

Задача S-33.17.

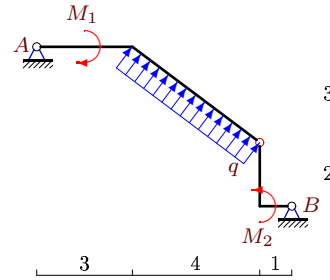
9



$AC = 5, q = 2, M_1 = 111, M_2 = 34.$

Задача S-33.18.

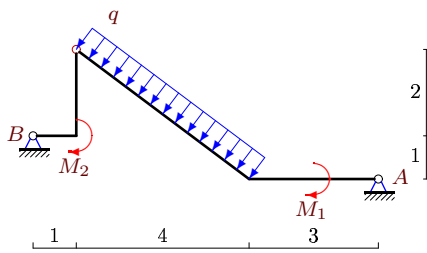
9



$q = 4, M_1 = 7, M_2 = 35.$

Задача S-33.19.

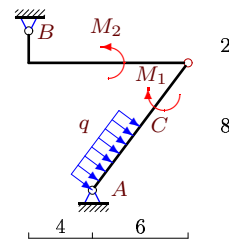
9



$q = 4, M_1 = 5, M_2 = 11.$

Задача S-33.20.

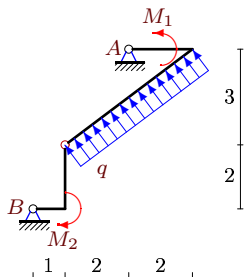
9



$AC = 5, q = 2, M_1 = 121, M_2 = 136.$

Задача S-33.21.

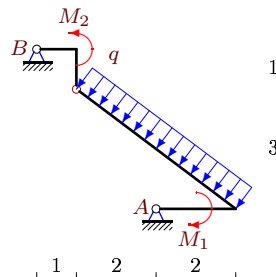
9



$q = 4, M_1 = 3, M_2 = 14.$

Задача S-33.22.

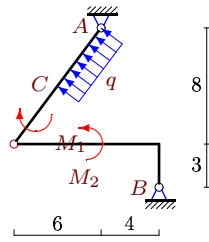
9



$q = 8, M_1 = 5, M_2 = 3.$

Задача S-33.23.

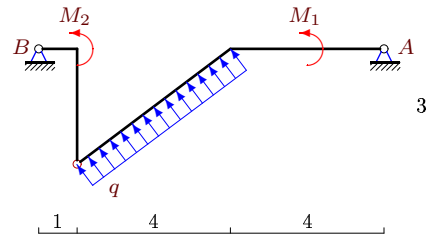
9



$AC = 5, q = 2, M_1 = 173, M_2 = 85.$

Задача S-33.24.

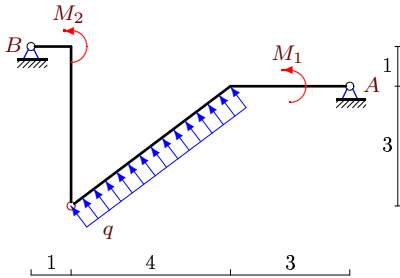
9



$q = 2, M_1 = 1, M_2 = 20.$

Задача S-33.25.

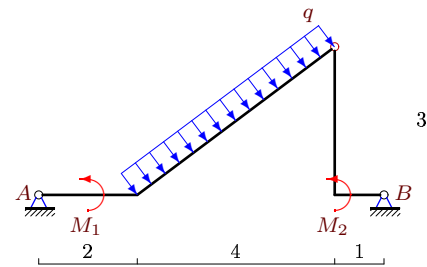
9



$q = 4, M_1 = 5, M_2 = 31.$

Задача S-33.26.

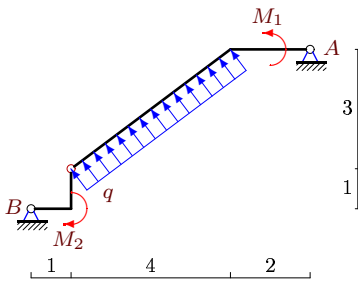
9



$q = 6, M_1 = 6, M_2 = 47.$

Задача S-33.27.

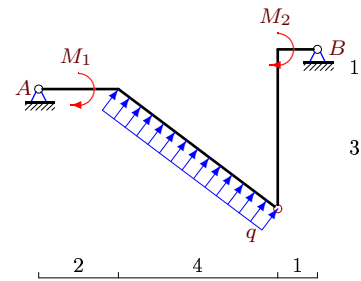
9



$q = 6, M_1 = 6, M_2 = 29.$

Задача S-33.28.

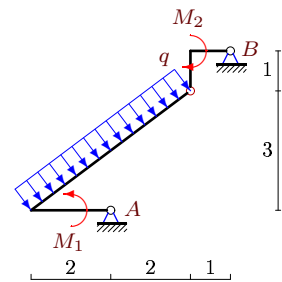
9



$q = 6, M_1 = 6, M_2 = 57.$

Задача S-33.29.

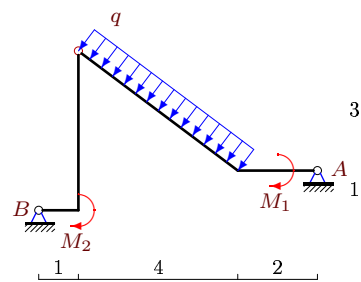
9



$q = 4, M_1 = 3, M_2 = 1.$

Задача S-33.30.

9



$q = 6, M_1 = 3, M_2 = 70.$

S-33

Ответы.

Простая составная рама с распределенной нагрузкой 12.02.2015

№	$X_A$	$Y_A$	$X_B$	$Y_B$
1	-3	-16	-13	28
2	-2	-2	-6	8
3	-2	3	-4	5
4	1	-54	-25	22
5	1	-3	5	-5
6	-12	-10	20	4
7	0	-4	6	-4
8	-1	-3	-5	-5
9	1	14	-19	10
10	0	-13	6	5
11	-1	4	7	4
12	0	13	-18	11
13	7	-12	-23	0
14	-8	13	24	-1
15	1	10	-9	-4
16	4	-7	4	1
17	9	6	-17	0
18	2	-9	-14	-7
19	2	7	10	9
20	-1	-9	-7	15
21	-1	-28	13	12
22	-1	54	25	-22
23	-7	7	15	-13
24	-2	-4	8	-4
25	2	-7	10	-9
26	1	14	-19	10
27	-1	-14	19	-10
28	-1	-13	-17	-11
29	1	28	-13	-12
30	-2	14	20	10

S-33 файл о33s9A