

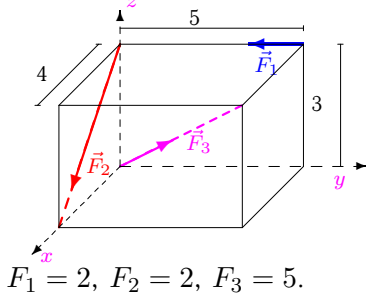
Приведение системы сил

Систему трех сил, приложенных к вершинам параллелепипеда, привести к началу координат. Найти координаты точки пересечения центральной винтовой оси с плоскостью xy . Размеры на рисунках даны в м, силы — в Н.

Кирсанов М.Н. **Решбник. Теоретическая механика**/Под ред. А. И. Кириллова.— М.: ФИЗМАТЛИТ, 2008. — 384 с. (с.111.)

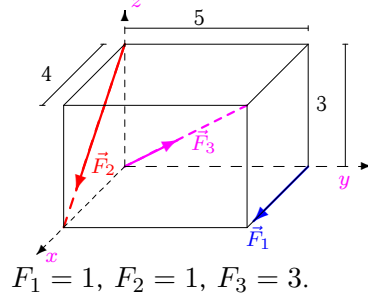
Задача 12.1.

8



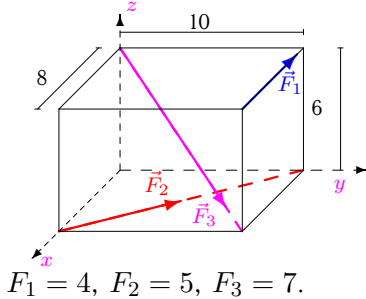
Задача 12.2.

8



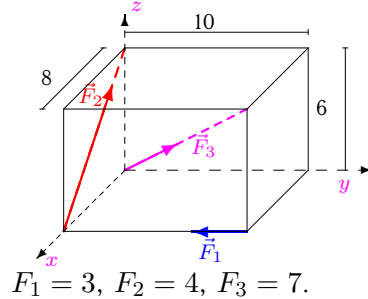
Задача 12.3.

8



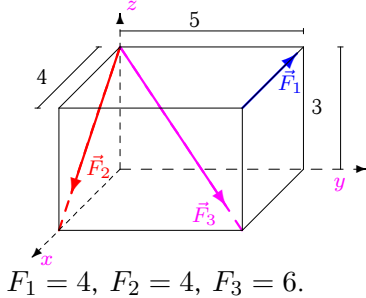
Задача 12.4.

8



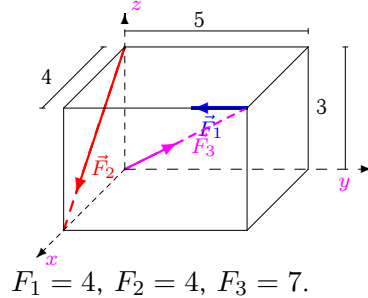
Задача 12.5.

8



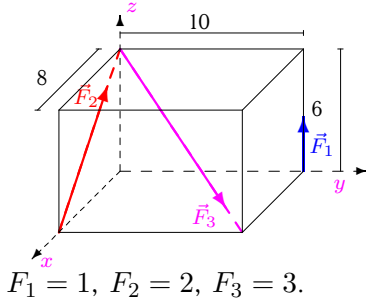
Задача 12.6.

8



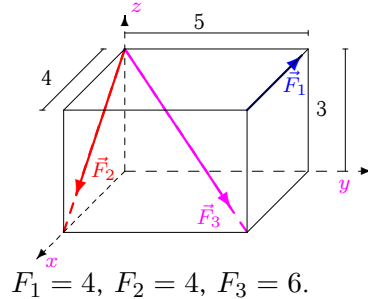
Задача 12.7.

8



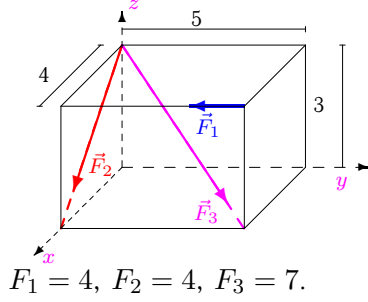
Задача 12.8.

8



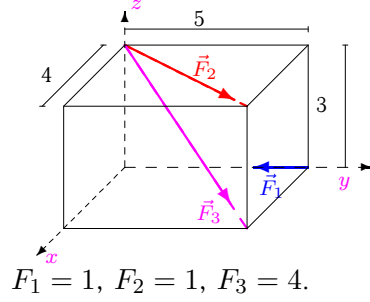
Задача 12.9.

8



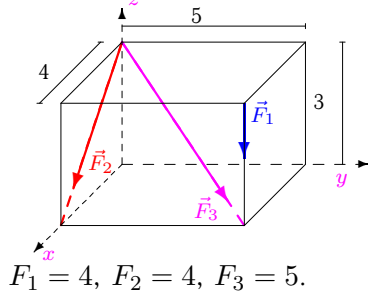
Задача 12.10.

8



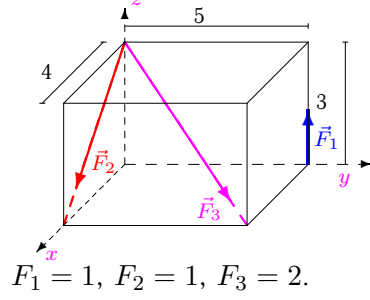
Задача 12.11.

8



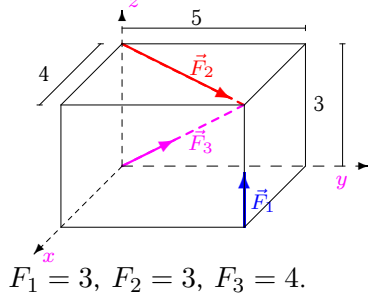
Задача 12.12.

8



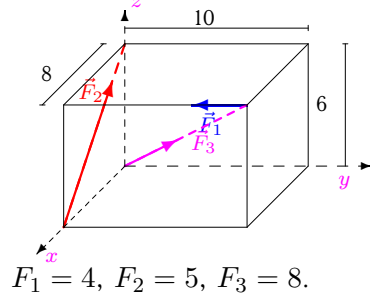
Задача 12.13.

8



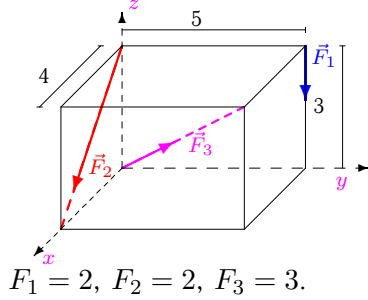
Задача 12.14.

8



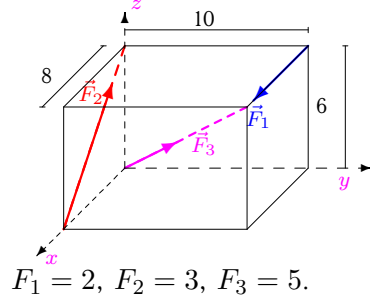
Задача 12.15.

8



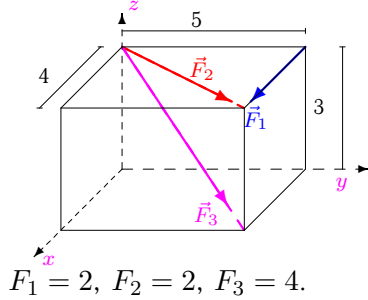
Задача 12.16.

8



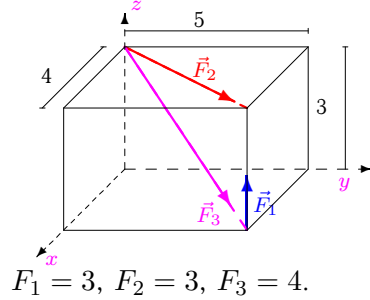
Задача 12.17.

8



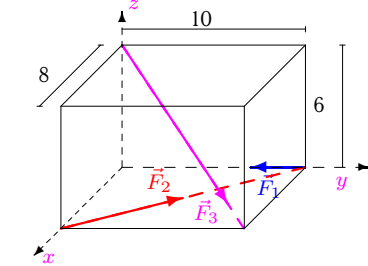
Задача 12.18.

8



Задача 12.19.

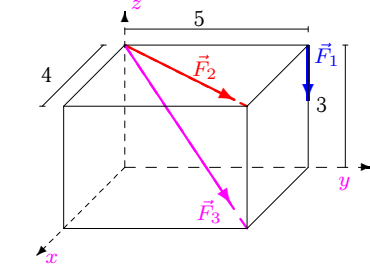
8



$F_1 = 1, F_2 = 2, F_3 = 5.$

Задача 12.20.

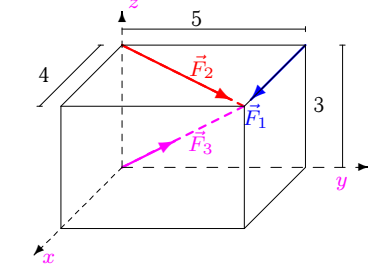
8



$F_1 = 2, F_2 = 2, F_3 = 3.$

Задача 12.21.

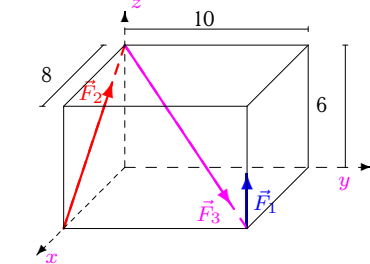
8



$F_1 = 2, F_2 = 2, F_3 = 4.$

Задача 12.22.

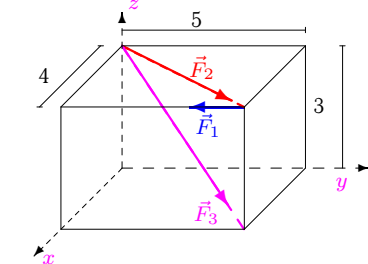
8



$F_1 = 3, F_2 = 4, F_3 = 5.$

Задача 12.23.

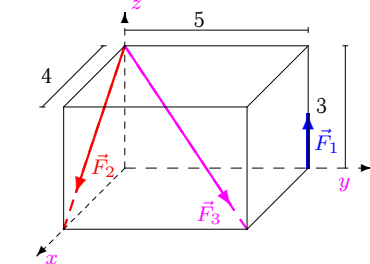
8



$F_1 = 4, F_2 = 4, F_3 = 7.$

Задача 12.24.

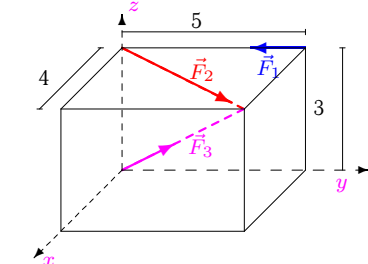
8



$F_1 = 1, F_2 = 1, F_3 = 2.$

Задача 12.25.

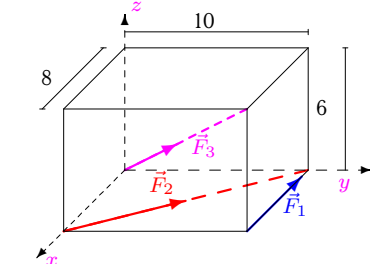
8



$F_1 = 2, F_2 = 2, F_3 = 5.$

Задача 12.26.

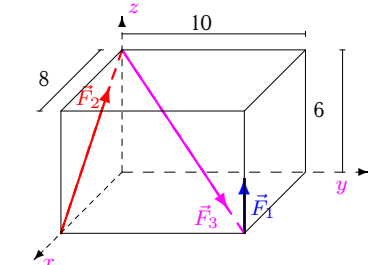
8



$F_1 = 3, F_2 = 4, F_3 = 6.$

Задача 12.27.

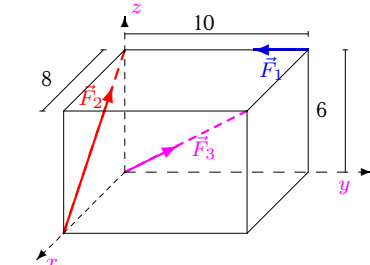
8



$F_1 = 3, F_2 = 4, F_3 = 5.$

Задача 12.28.

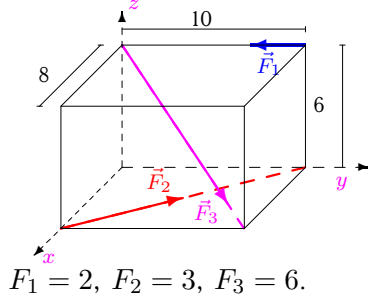
8



$F_1 = 2, F_2 = 3, F_3 = 6.$

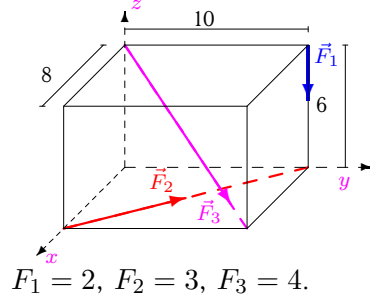
Задача 12.29.

8



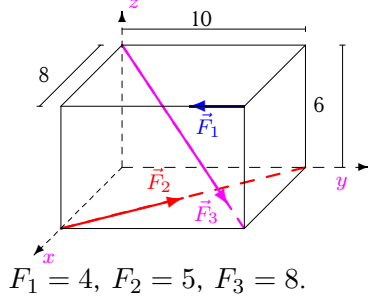
Задача 12.30.

8



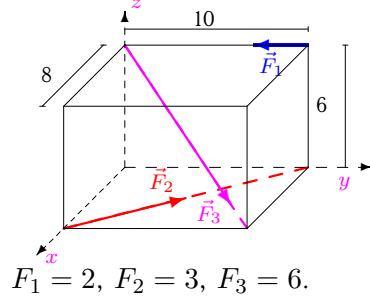
Задача 12.31.

8



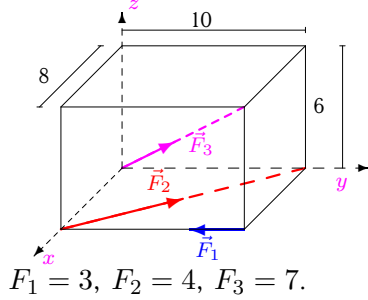
Задача 12.32.

8



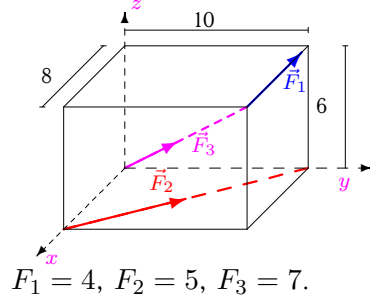
Задача 12.33.

8



Задача 12.34.

8



Приведение системы сил

	R_x	R_y	R_z	R	M_x	M_y	M_z	M	I	M_{min}	x_A	y_A
1	4.428	1.536	0.921	4.777	6.000	4.800	0.000	7.684	33.941	7.105	-2.731	-0.637
2	3.497	2.121	0.673	4.145	0.000	2.400	-5.000	5.546	1.727	0.417	-3.250	-0.523
3	-3.164	8.854	-2.970	9.860	-29.698	-0.241	71.235	77.178	-119.736	-12.143	3.590	11.312
4	0.760	1.950	5.370	5.763	0.000	-19.200	-24.000	30.735	-166.312	-28.858	1.757	0.708
5	2.594	4.243	-4.946	7.013	-12.728	7.782	20.000	24.951	-98.912	-14.103	3.299	1.519
6	7.160	0.950	0.570	7.245	12.000	9.600	-16.000	22.185	85.918	11.859	-14.118	0.492
7	0.097	2.121	0.927	2.317	-2.728	0.582	0.000	2.789	0.971	0.419	-0.214	-2.961
8	2.594	4.243	-4.946	7.013	-12.728	7.782	20.000	24.951	-98.912	-14.103	3.299	1.519
9	7.160	0.950	-5.370	9.000	-2.849	21.479	-16.000	26.935	85.918	9.546	3.812	1.945
10	2.887	2.609	-1.697	4.246	-10.828	8.662	0.000	13.866	-8.662	-2.040	5.843	5.563
11	6.028	3.536	-8.521	11.021	-30.607	34.085	0.000	45.810	-64.000	-5.807	4.219	3.219
12	1.931	1.414	-0.449	2.435	0.757	5.794	0.000	5.843	9.657	3.965	7.785	5.322
13	4.137	5.171	4.697	8.119	7.972	-6.378	0.000	10.209	-0.000	-0.000	1.358	1.697
14	0.525	1.657	6.394	6.626	24.000	-24.000	-32.000	46.648	-231.765	-34.977	2.386	4.187
15	3.297	2.121	-1.927	4.369	-10.000	4.800	0.000	11.092	-22.788	-5.216	3.805	3.146
16	2.428	3.536	3.921	5.812	0.000	-2.400	-20.000	20.143	-86.912	-14.955	-1.708	1.594
17	5.512	4.390	-1.697	7.248	-13.170	16.536	-10.000	23.386	16.971	2.341	8.909	8.810
18	4.137	5.171	1.303	6.749	-0.513	0.410	0.000	0.657	-0.000	-0.000	-0.315	-0.394
19	1.579	4.097	-2.121	4.877	-21.213	16.971	12.494	29.901	9.533	1.955	7.226	10.298
20	2.946	3.683	-3.273	5.741	-21.049	8.839	0.000	22.830	-29.464	-5.132	3.707	5.627
21	5.512	4.390	1.697	7.248	-4.685	9.748	-10.000	14.730	-0.000	-0.000	-5.744	-2.761
22	-0.372	3.536	3.279	4.836	8.787	-26.229	0.000	27.662	-96.000	-19.851	3.574	2.215
23	6.459	4.073	-2.970	8.193	-12.220	19.376	-16.000	27.942	47.518	5.800	5.553	5.654
24	1.931	1.414	-0.449	2.435	0.757	5.794	0.000	5.843	9.657	3.965	7.785	5.322
25	4.078	3.097	2.121	5.543	1.315	3.748	0.000	3.972	16.971	3.062	-0.960	-0.442
26	-2.105	7.366	2.546	8.073	0.000	0.000	54.988	54.988	139.976	17.339	6.215	1.776
27	-0.372	3.536	3.279	4.836	8.787	-26.229	0.000	27.662	-96.000	-19.851	3.574	2.215
28	0.994	2.243	4.346	4.990	12.000	-14.400	0.000	18.745	-20.365	-4.081	2.892	2.949
29	1.520	4.585	-2.546	5.460	-13.456	20.365	18.741	30.773	25.217	4.618	6.477	5.791
30	0.389	5.171	-3.697	6.369	-36.971	13.576	18.741	43.616	-13.451	-2.112	4.136	9.965
31	1.402	5.561	-3.394	6.664	-9.941	27.153	-0.765	28.926	139.662	20.957	2.848	4.228
32	1.520	4.585	-2.546	5.460	-13.456	20.365	18.741	30.773	25.217	4.618	6.477	5.791
33	1.461	5.073	2.970	6.057	0.000	0.000	0.988	0.988	2.934	0.484	0.137	-0.039
34	-3.164	8.854	2.970	9.860	0.000	-24.000	71.235	75.169	-0.942	-0.096	8.052	-0.010