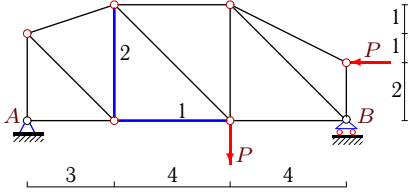


Расчет фермы

К плоской ферме приложены две одинаковые силы P . Найти усилия в стержнях 1 и 2 (выделены утолщением). Размеры даны в метрах.

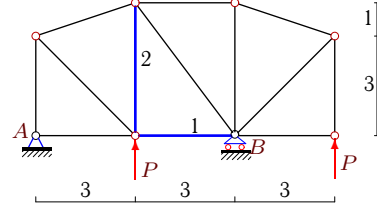
Кирсанов М.Н. **Решебник. Теоретическая механика**/Под ред. А. И. Кириллова.- М.: ФИЗМАТЛИТ, 2008. — 384 с. (с.37.)

Задача 27.1.



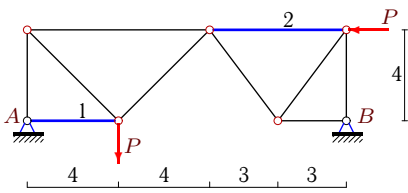
$P = 22$ кН

Задача 27.2.



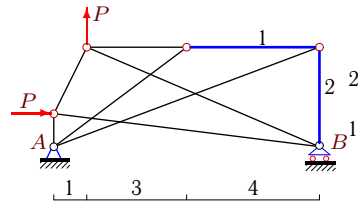
$P = 1$ кН

Задача 27.3.



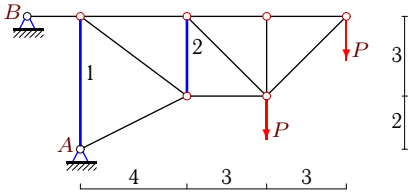
$P = 1$ кН

Задача 27.4.



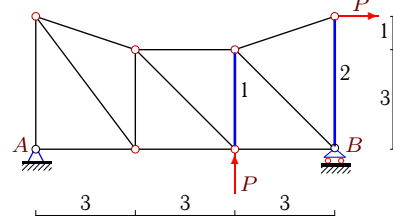
$P = 8$ кН

Задача 27.5.



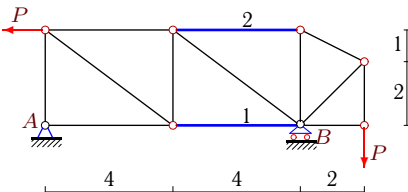
$P = 10$ кН

Задача 27.6.



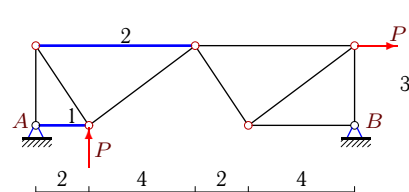
$P = 9$ кН

Задача 27.7.



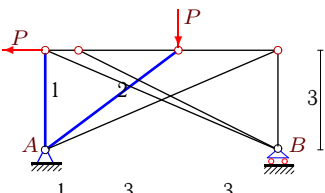
$P = 24$ кН

Задача 27.8.



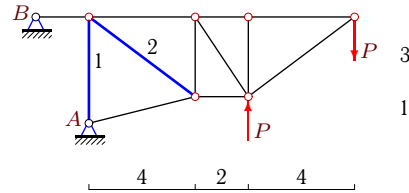
$P = 36$ кН

Задача 27.9.



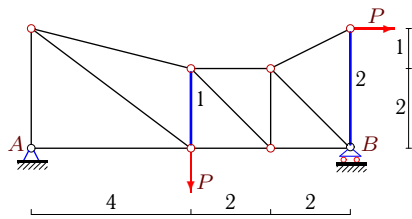
$P = 21$ кН

Задача 27.10.



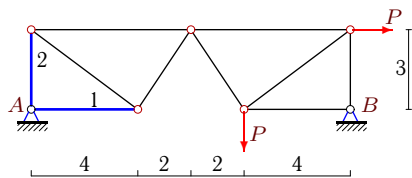
$P = 12$ кН

Задача 27.11.



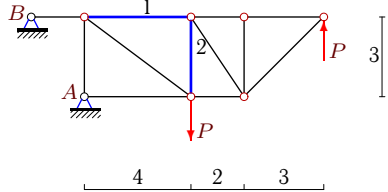
$P = 16 \text{ кН}$

Задача 27.13.



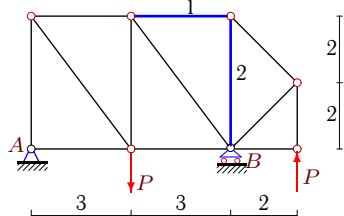
$P = 12 \text{ кН}$

Задача 27.15.



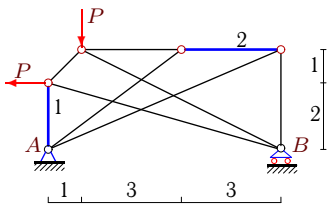
$P = 3 \text{ кН}$

Задача 27.17.



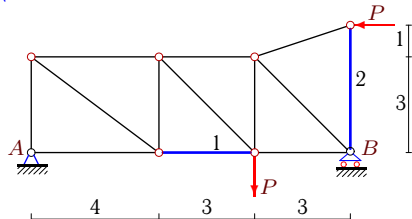
$P = 6 \text{ кН}$

Задача 27.19.



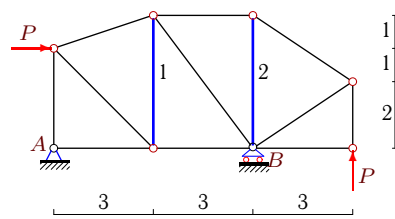
$P = 7 \text{ кН}$

Задача 27.21.



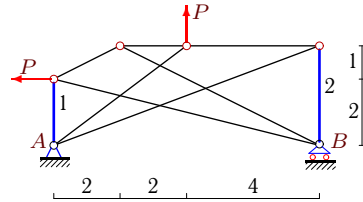
$P = 30 \text{ кН}$

Задача 27.12.



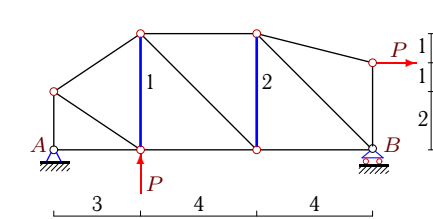
$P = 4 \text{ кН}$

Задача 27.14.



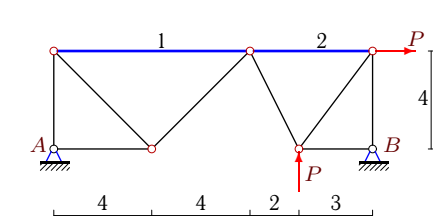
$P = 8 \text{ кН}$

Задача 27.16.



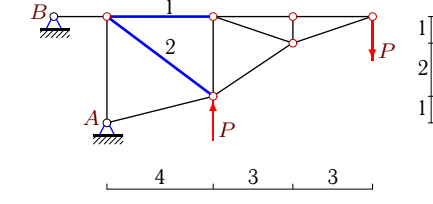
$P = 2 \text{ кН}$

Задача 27.18.



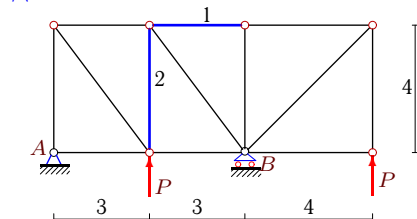
$P = 26 \text{ кН}$

Задача 27.20.



$P = 8 \text{ кН}$

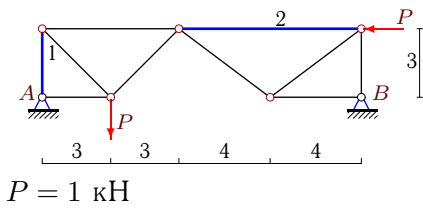
Задача 27.22.



$P = 6 \text{ кН}$

Задача 27.23.

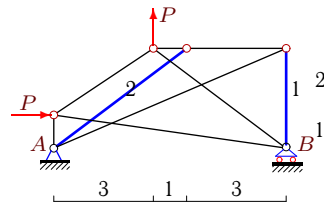
1



$P = 1 \text{ кН}$

Задача 27.24.

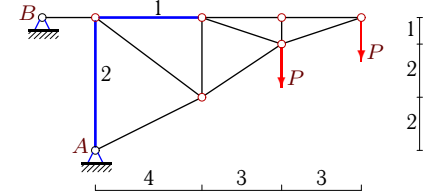
1



$P = 7 \text{ кН}$

Задача 27.25.

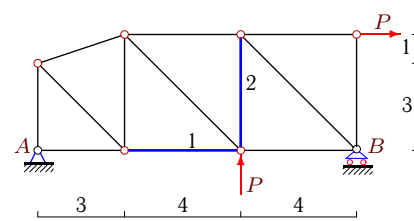
1



$P = 10 \text{ кН}$

Задача 27.26.

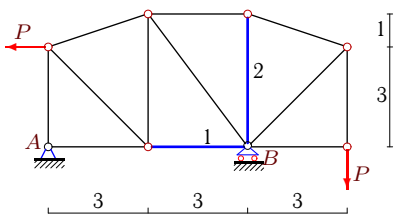
1



$P = 11 \text{ кН}$

Задача 27.27.

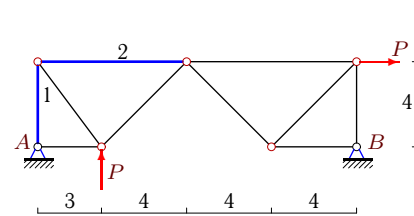
1



$P = 4 \text{ кН}$

Задача 27.28.

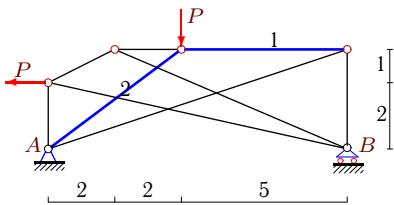
1



$P = 15 \text{ кН}$

Задача 27.29.

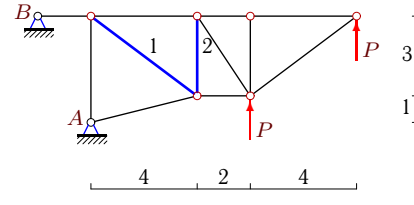
1



$P = 9 \text{ кН}$

Задача 27.30.

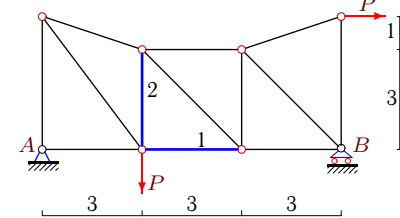
1



$P = 3 \text{ кН}$

Задача 27.31.

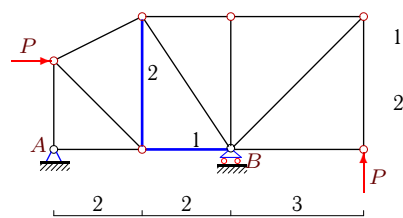
1



$P = 27 \text{ кН}$

Задача 27.32.

1



$P = 12 \text{ кН}$

№	X_A	Y_A	X_B	Y_B	S_1	S_2
1	22	12	-	10	-13	-9
2	0	0	-	-2	0	-1
3	1	1	0	0	-1	-1
4	-8	-8	-	0	-8	-3
5	34	20	-34	-	-3	-20
6	-9	-7	-	-2	-2	-3
7	24	3	-	21	-20	16
8	-30	-39	-6	3	30	26
9	21	18	-	3	0	-35
10	12	0	-12	-	3	-5
11	-16	2	-	14	13	-8
12	-4	0	-	-4	1	2
13	2	1	-14	11	-2	-1
14	8	-2	-	-6	1	7
15	-5	0	5	-	-5	3
16	-2	-2	-	0	-1	0
17	0	5	-	-5	-3	3
18	-28	-14	2	-12	14	35
19	7	8	-	-1	-5	7
20	12	0	-12	-	16	-5
21	30	21	-	9	-2	10
22	0	1	-	-13	-6	-7
23	1	1	0	0	-1	-1
24	-7	-5	-	-2	-3	0
25	34	20	-34	-	30	-3
26	-11	-8	-	-3	5	-3
27	4	0	-	4	-3	-1
28	-13	-16	-2	1	16	12
29	9	7	-	2	-3	-15
30	-12	-6	12	-	-5	6
31	-27	6	-	21	33	19
32	-12	3	-	-15	10	2