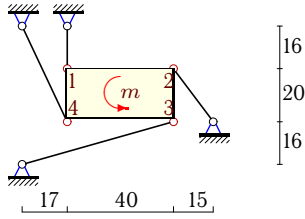


Статически неопределимая стержневая система (1)

Однородная пластина весом P удерживается в вертикальной плоскости четырьмя стержнями одинаковой жесткости. На пластину действует момент m . Размеры даны в см. Найти усилия в стержнях.

Задача 23.1.

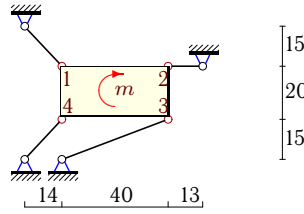
3



$P = 7 \text{ Н}$, $m = 0.1 \text{ Нм}$.

Задача 23.2.

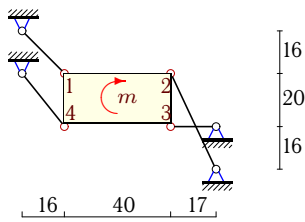
3



$P = 6 \text{ Н}$, $m = 0.11 \text{ Нм}$.

Задача 23.3.

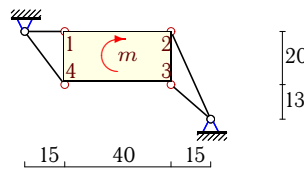
3



$P = 6 \text{ Н}$, $m = 0.15 \text{ Нм}$.

Задача 23.4.

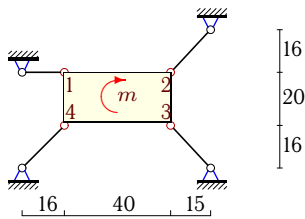
3



$P = 5 \text{ Н}$, $m = 0.3 \text{ Нм}$.

Задача 23.5.

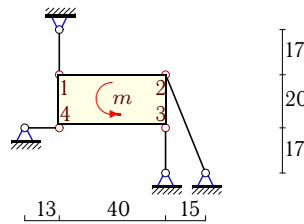
3



$P = 5 \text{ Н}$, $m = 0.18 \text{ Нм}$.

Задача 23.6.

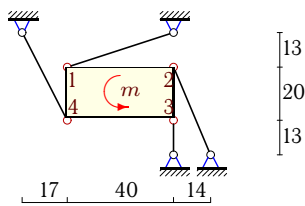
3



$P = 7 \text{ Н}$, $m = 0.1 \text{ Нм}$.

Задача 23.7.

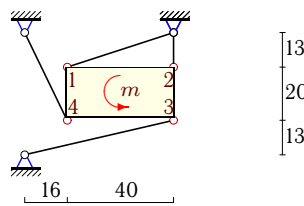
3



$P = 8 \text{ Н}$, $m = 0.15 \text{ Нм}$.

Задача 23.8.

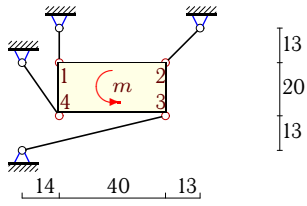
3



$P = 8 \text{ Н}$, $m = 0.07 \text{ Нм}$.

Задача 23.9.

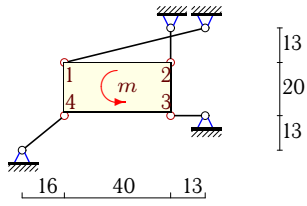
3



$$P = 7 \text{ Н}, m = 0.1 \text{ Нм.}$$

Задача 23.11.

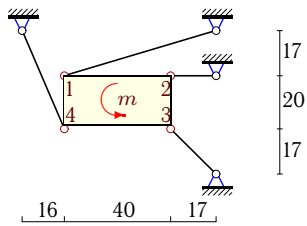
3



$$P = 9 \text{ Н}, m = 0.14 \text{ Нм.}$$

Задача 23.13.

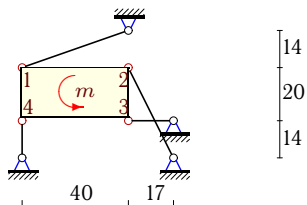
3



$$P = 9 \text{ Н}, m = 0.22 \text{ Нм.}$$

Задача 23.15.

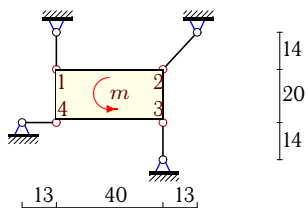
3



$$P = 8 \text{ Н}, m = 0.15 \text{ Нм.}$$

Задача 23.17.

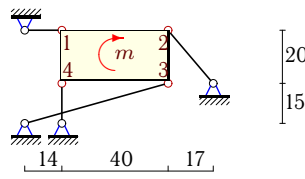
3



$$P = 7 \text{ Н}, m = 0.1 \text{ Нм.}$$

Задача 23.10.

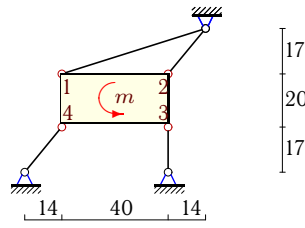
3



$$P = 5 \text{ Н}, m = 0.26 \text{ Нм.}$$

Задача 23.12.

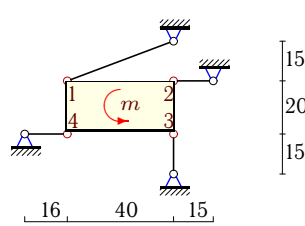
3



$$P = 9 \text{ Н}, m = 0.18 \text{ Нм.}$$

Задача 23.14.

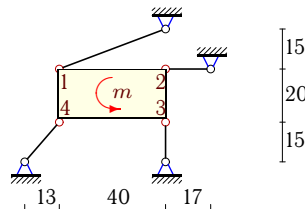
3



$$P = 8 \text{ Н}, m = 0.11 \text{ Нм.}$$

Задача 23.16.

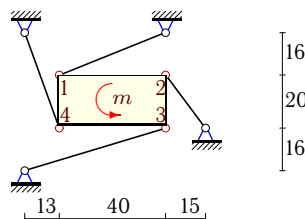
3



$$P = 8 \text{ Н}, m = 0.11 \text{ Нм.}$$

Задача 23.18.

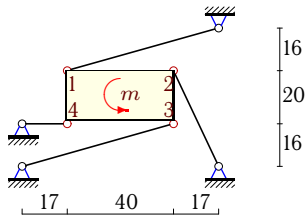
3



$$P = 8 \text{ Н}, m = 0.13 \text{ Нм.}$$

Задача 23.19.

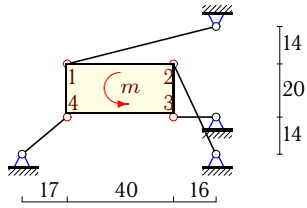
3



$P = 9 \text{ Н}, m = 0.3 \text{ Нм.}$

Задача 23.21.

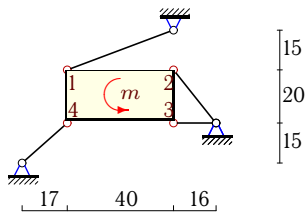
3



$P = 9 \text{ Н}, m = 0.3 \text{ Нм.}$

Задача 23.23.

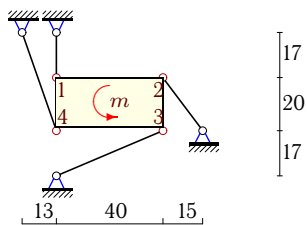
3



$P = 8 \text{ Н}, m = 0.13 \text{ Нм.}$

Задача 23.25.

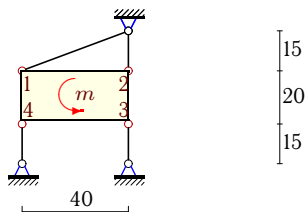
3



$P = 7 \text{ Н}, m = 0.1 \text{ Нм.}$

Задача 23.27.

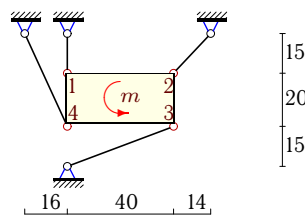
3



$P = 8 \text{ Н}, m = 0.07 \text{ Нм.}$

Задача 23.20.

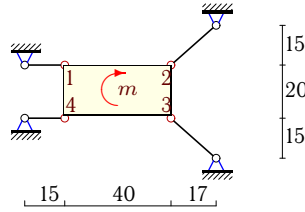
3



$P = 7 \text{ Н}, m = 0.1 \text{ Нм.}$

Задача 23.22.

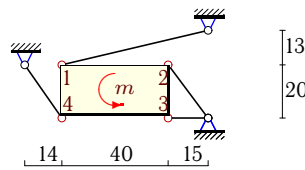
3



$P = 5 \text{ Н}, m = 0.18 \text{ Нм.}$

Задача 23.24.

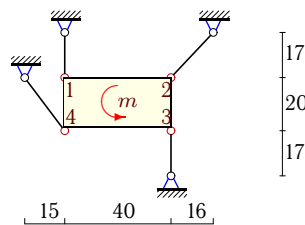
3



$P = 9 \text{ Н}, m = 0.26 \text{ Нм.}$

Задача 23.26.

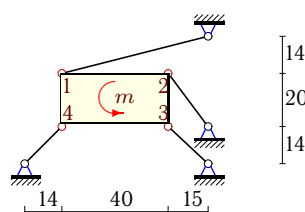
3



$P = 7 \text{ Н}, m = 0.1 \text{ Нм.}$

Задача 23.28.

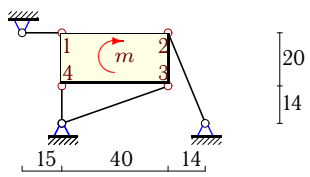
3



$P = 9 \text{ Н}, m = 0.26 \text{ Нм.}$

Задача 23.29.

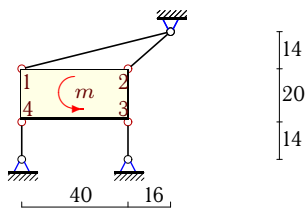
3



$P = 5 \text{ Н}, m = 0.3 \text{ Нм.}$

Задача 23.30.

3



$P = 9 \text{ Н}, m = 0.18 \text{ Нм.}$

Статически неопределимая стержневая система (1)

№	S_1	S_2	S_3	S_4
1	3.967	-2.506	-1.824	0.592
2	3.414	-2.464	-2.502	-3.592
3	2.293	-2.294	4.444	2.951
4	-3.380	-3.284	-1.941	0.924
5	0.428	1.034	-3.201	-2.702
6	3.897	-0.781	-2.379	-0.294
7	1.946	-0.781	-3.679	3.375
8	1.497	4.530	-0.032	3.335
9	-7.724	10.639	2.185	9.414
10	-0.645	-2.885	-1.270	-2.462
11	1.762	5.006	-6.111	-5.669
12	-1.845	-9.353	-7.417	-12.122
13	2.469	5.772	-11.341	0.300
14	3.756	2.395	-6.681	5.912
15	0.260	-3.352	1.254	-4.916
16	1.942	-7.314	-0.977	-8.391
17	3.329	1.236	-2.765	0.841
18	2.384	-3.954	-1.494	3.742
19	9.019	-7.162	-0.320	5.933
20	-10.027	11.758	3.800	10.738
21	1.733	-4.107	-5.838	-7.650
22	-1.267	3.779	-3.779	1.267
23	2.236	-4.319	-3.750	-5.807
24	2.171	-4.460	4.016	6.021
25	3.477	-2.293	-1.861	1.018
26	2.257	1.188	-2.792	1.357
27	0.000	1.913	-1.913	-4.175
28	1.316	0.745	-7.779	-5.606
29	0.310	-2.393	-1.293	-2.360
30	-0.301	0.388	-3.794	-5.023