

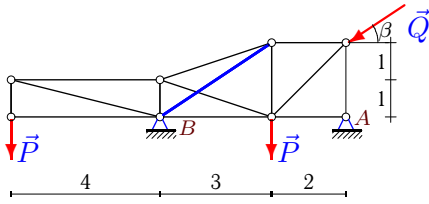
Расчет статически неопределимой фермы (2)

Найти реакции опор фермы и усилие S в дополнительном раскосе, выделенном утолщенной линией.

<p>Задача M24.1. 2</p> <p style="text-align: right;">$P = 9 \text{ кН},$ $Q = 7 \text{ кН},$ $\beta = 15^\circ.$</p>	<p>Задача M24.2. 2</p> <p style="text-align: right;">$P = 6 \text{ кН},$ $Q = 6 \text{ кН},$ $\beta = 30^\circ.$</p>
<p>Задача M24.3. 2</p> <p style="text-align: right;">$P = 12 \text{ кН},$ $Q = 7 \text{ кН},$ $\beta = 30^\circ.$</p>	<p>Задача M24.4. 2</p> <p style="text-align: right;">$P = 8 \text{ кН},$ $Q = 5 \text{ кН},$ $\beta = 15^\circ.$</p>
<p>Задача M24.5. 2</p> <p style="text-align: right;">$P = 13 \text{ кН},$ $Q = 4 \text{ кН},$ $\beta = 45^\circ.$</p>	<p>Задача M24.6. 2</p> <p style="text-align: right;">$P = 6 \text{ кН},$ $Q = 9 \text{ кН},$ $\beta = 45^\circ.$</p>
<p>Задача M24.7. 2</p> <p style="text-align: right;">$P = 9 \text{ кН},$ $Q = 5 \text{ кН},$ $\beta = 30^\circ.$</p>	<p>Задача M24.8. 2</p> <p style="text-align: right;">$P = 6 \text{ кН},$ $Q = 3 \text{ кН},$ $\beta = 30^\circ.$</p>
<p>Задача M24.9. 2</p> <p style="text-align: right;">$P = 5 \text{ кН},$ $Q = 6 \text{ кН},$ $\beta = 15^\circ.$</p>	<p>Задача M24.10. 2</p> <p style="text-align: right;">$P = 11 \text{ кН},$ $Q = 3 \text{ кН},$ $\beta = 30^\circ.$</p>

Задача M24.11.

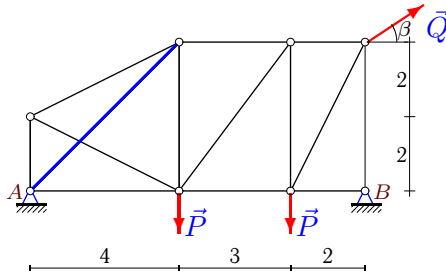
2



$P = 10 \text{ кН},$
 $Q = 9 \text{ кН},$
 $\beta = 45^\circ.$

Задача M24.12.

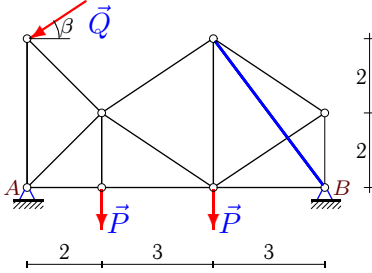
2



$P = 9 \text{ кН},$
 $Q = 7 \text{ кН},$
 $\beta = 30^\circ.$

Задача M24.13.

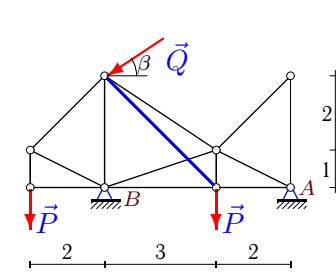
2



$P = 12 \text{ кН},$
 $Q = 8 \text{ кН},$
 $\beta = 15^\circ.$

Задача M24.14.

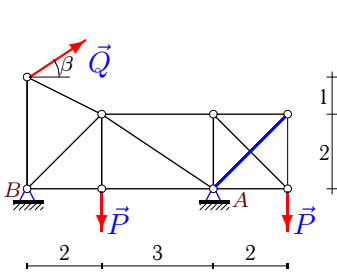
2



$P = 8 \text{ кН},$
 $Q = 5 \text{ кН},$
 $\beta = 30^\circ.$

Задача M24.15.

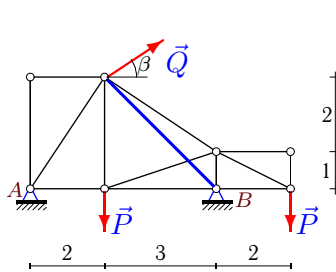
2



$P = 11 \text{ кН},$
 $Q = 8 \text{ кН},$
 $\beta = 45^\circ.$

Задача M24.16.

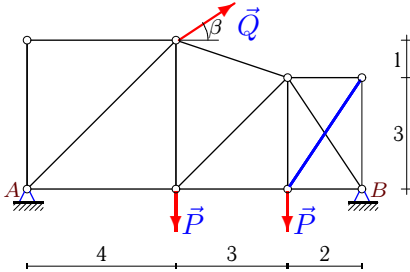
2



$P = 5 \text{ кН},$
 $Q = 7 \text{ кН},$
 $\beta = 30^\circ.$

Задача M24.17.

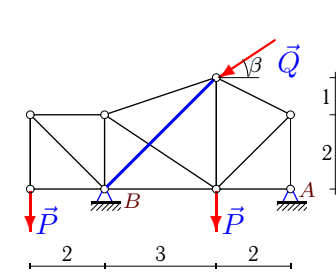
2



$P = 10 \text{ кН},$
 $Q = 7 \text{ кН},$
 $\beta = 30^\circ.$

Задача M24.18.

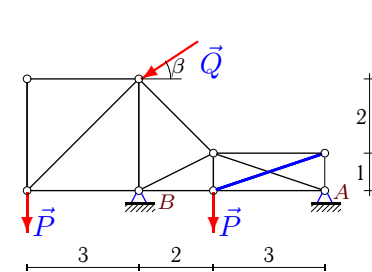
2



$P = 9 \text{ кН},$
 $Q = 3 \text{ кН},$
 $\beta = 45^\circ.$

Задача M24.19.

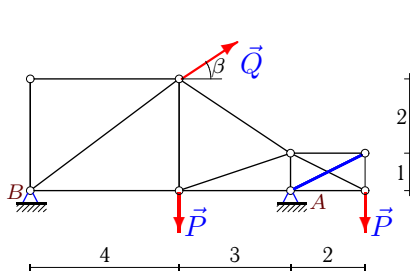
2



$P = 7 \text{ кН},$
 $Q = 8 \text{ кН},$
 $\beta = 30^\circ.$

Задача M24.20.

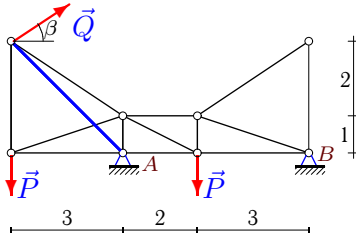
2



$P = 13 \text{ кН},$
 $Q = 9 \text{ кН},$
 $\beta = 30^\circ.$

Задача M24.21.

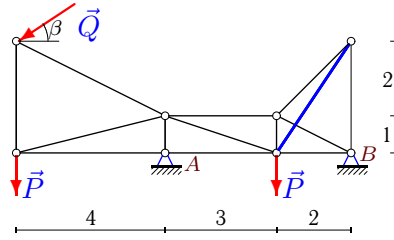
2



$P = 11 \text{ кН},$
 $Q = 5 \text{ кН},$
 $\beta = 15^\circ.$

Задача M24.22.

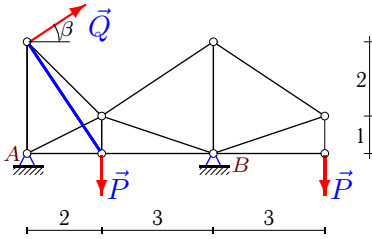
2



$P = 11 \text{ кН},$
 $Q = 8 \text{ кН},$
 $\beta = 15^\circ.$

Задача M24.23.

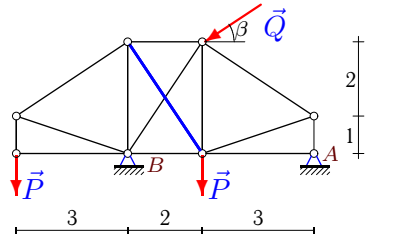
2



$P = 13 \text{ кН},$
 $Q = 9 \text{ кН},$
 $\beta = 30^\circ.$

Задача M24.24.

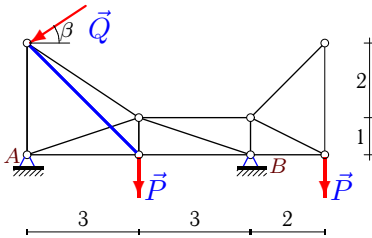
2



$P = 13 \text{ кН},$
 $Q = 9 \text{ кН},$
 $\beta = 30^\circ.$

Задача M24.25.

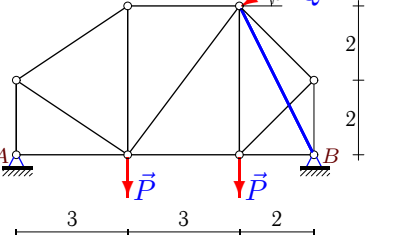
2



$P = 8 \text{ кН},$
 $Q = 5 \text{ кН},$
 $\beta = 30^\circ.$

Задача M24.26.

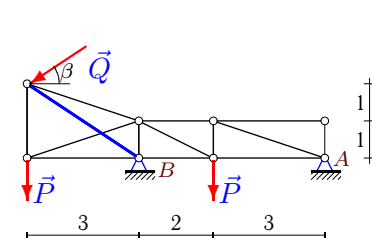
2



$P = 12 \text{ кН},$
 $Q = 7 \text{ кН},$
 $\beta = 30^\circ.$

Задача M24.27.

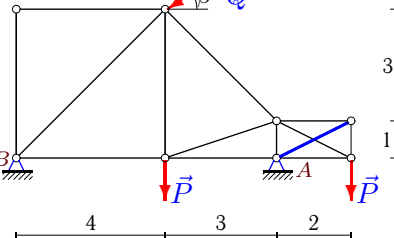
2



$P = 7 \text{ кН},$
 $Q = 3 \text{ кН},$
 $\beta = 15^\circ.$

Задача M24.28.

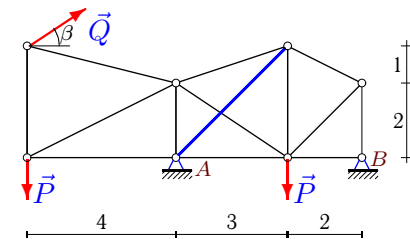
2



$P = 7 \text{ кН},$
 $Q = 3 \text{ кН},$
 $\beta = 45^\circ.$

Задача M24.29.

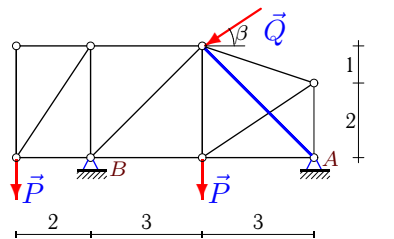
2



$P = 6 \text{ кН},$
 $Q = 5 \text{ кН},$
 $\beta = 15^\circ.$

Задача M24.30.

2



$P = 11 \text{ кН},$
 $Q = 9 \text{ кН},$
 $\beta = 15^\circ.$

М24 Ответы.**Расчет статически неопределимой фермы (2)**

16.06.2012

	δ_{11}	δ_{12}	δ_{22}	Δ_{1p}	Δ_{2p}	X_B	S	X_A	Y_A	Y_B
1	5.000	0.894	11.975	16.182	21.005	-2.962	-1.533	9.724	-3.597	23.409
2	7.000	0.000	9.535	-29.785	-11.291	4.255	1.184	0.941	3.826	11.174
3	7.000	1.800	11.750	17.813	84.951	-0.714	-7.121	6.776	20.822	6.678
4	5.000	-0.894	8.775	-40.634	-17.237	8.636	2.845	-13.465	10.536	4.170
5	8.000	1.109	9.129	-127.029	-89.586	14.767	8.019	-17.595	15.686	7.486
6	8.000	-1.789	8.072	78.637	-53.759	-8.775	4.715	2.411	-0.318	5.955
7	8.000	1.414	9.657	-90.233	5.118	11.675	-2.240	-7.345	9.335	11.165
8	6.000	-1.800	17.280	2.088	29.735	-0.892	-1.814	-1.706	7.268	3.232
9	7.000	-0.894	8.775	-32.794	-18.859	5.025	2.661	0.771	9.865	1.688
10	6.000	0.000	12.596	14.206	103.690	-2.368	-8.232	4.966	19.185	4.315
11	5.000	2.496	11.009	107.272	235.151	-12.168	-18.601	18.532	1.818	24.546
12	9.000	-2.828	14.747	44.790	19.938	-5.748	-2.454	-0.314	4.306	10.194
13	8.000	-1.800	11.750	9.544	31.106	-1.853	-2.931	9.580	19.434	6.636
14	5.000	2.121	10.770	-11.670	-55.150	0.176	5.086	4.154	-0.998	19.498
15	5.000	0.000	9.657	-8.172	75.113	1.634	-7.778	-7.291	23.194	-6.851
16	5.000	-2.121	10.770	-24.192	71.420	2.210	-6.196	-8.272	-4.737	11.237
17	9.000	-1.109	12.596	81.341	-92.741	-8.220	6.639	2.157	3.139	13.361
18	5.000	2.121	11.770	22.757	86.487	-1.553	-7.068	3.674	1.800	18.321
19	5.000	2.846	11.925	48.713	81.083	-6.795	-5.178	13.723	-5.557	23.557
20	7.000	0.000	8.072	119.579	122.651	-17.083	-15.194	9.288	24.912	-3.412
21	5.000	-0.000	10.770	-15.990	117.815	3.198	-10.939	-8.028	19.232	1.474
22	5.000	-1.109	7.745	-260.365	52.246	52.236	0.737	-44.509	32.563	-8.493
23	5.000	-1.109	7.745	70.148	-21.821	-13.844	0.834	6.050	-9.177	30.677
24	5.000	1.109	12.596	-28.018	-131.932	3.345	10.180	4.449	-5.477	35.977
25	6.000	-2.121	10.770	-14.971	-17.060	3.284	2.231	1.046	5.998	12.502
26	8.000	-0.894	9.535	1.454	46.794	-0.738	-4.977	6.800	14.406	13.094
27	5.000	-0.000	11.009	70.986	144.512	-14.197	-13.127	17.095	-3.025	17.801
28	7.000	0.000	8.072	23.151	65.858	-3.307	-8.159	5.429	13.000	3.121
29	5.000	-2.121	11.770	-6.502	32.944	0.122	-2.777	-4.952	7.973	2.733
30	6.000	2.121	11.770	-48.114	-45.494	7.105	2.585	1.588	-1.349	25.678

М24 файл о24т2В

