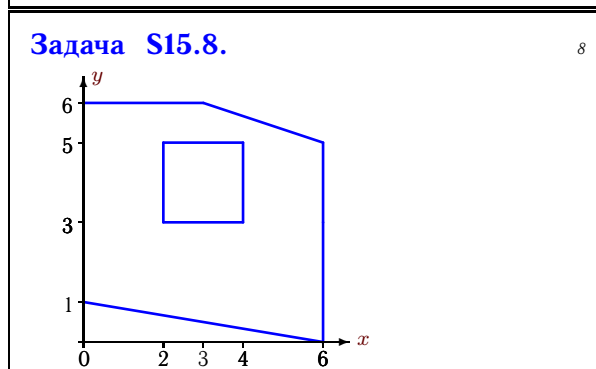
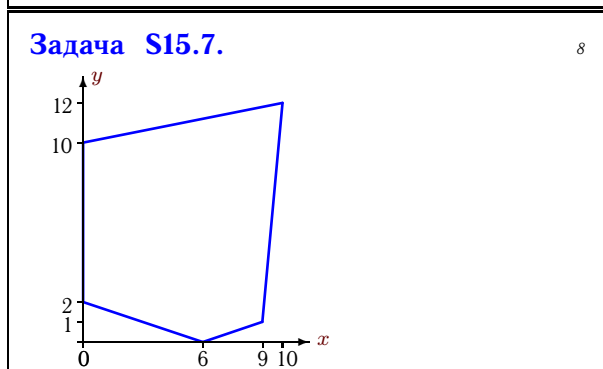
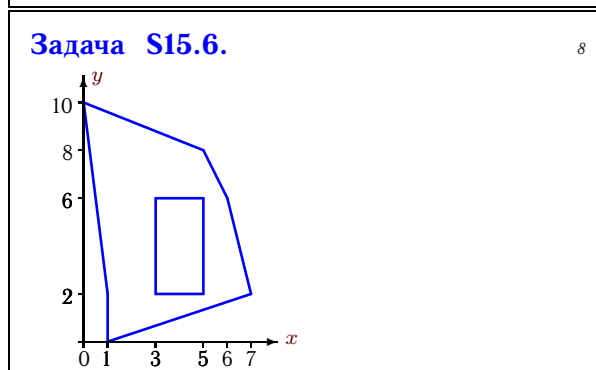
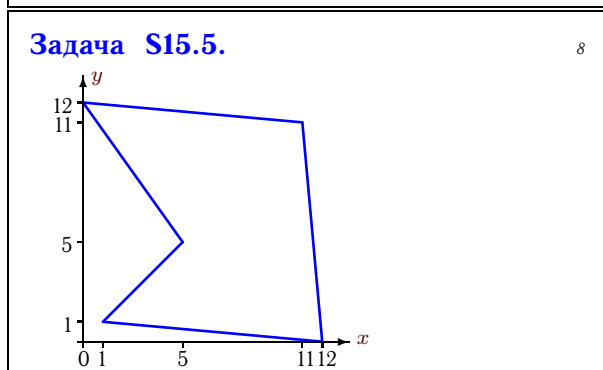
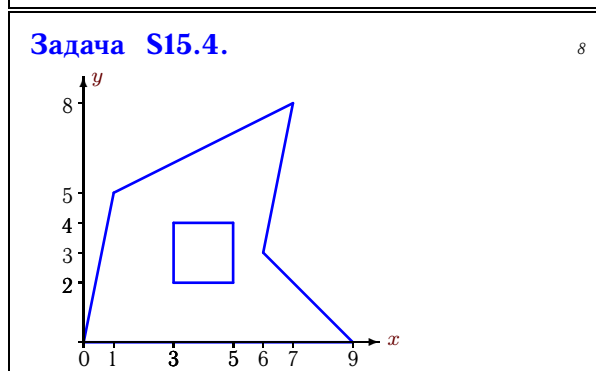
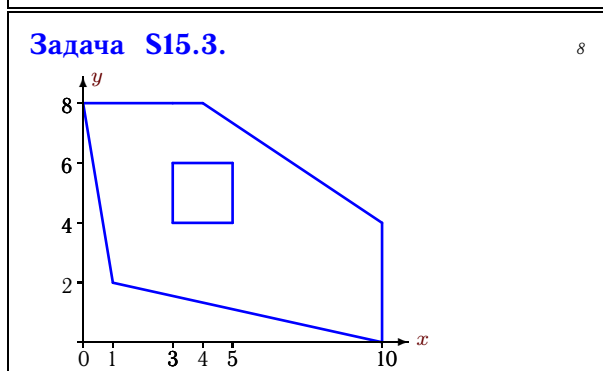
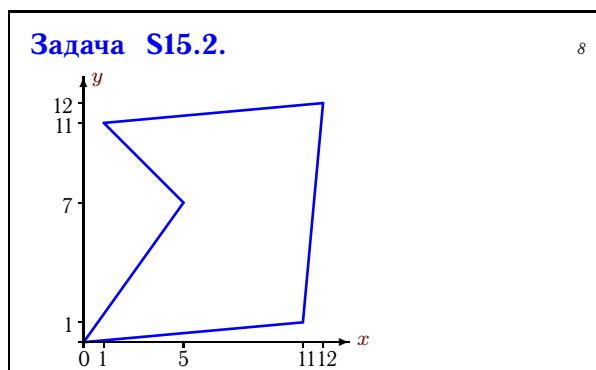
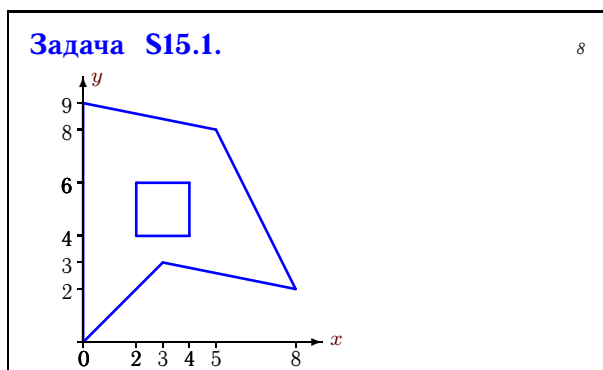


Геометрические характеристики плоской фигуры

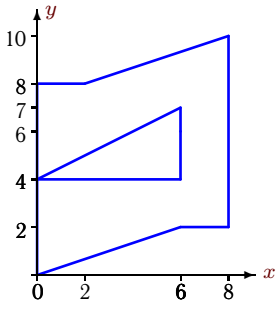
Найти площадь (в см^2) и координаты центра тяжести плоской фигуры (в см).
Отметки на осях даны в сантиметрах.

Кирсанов М.Н. **Решебник. Теоретическая механика**/Под ред. А. И. Кириллова.– М.: ФИЗМАТЛИТ, 2008. — 384 с. (с.118.)



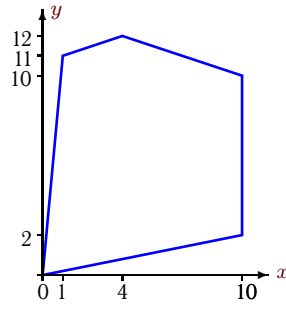
Задача S15.9.

8



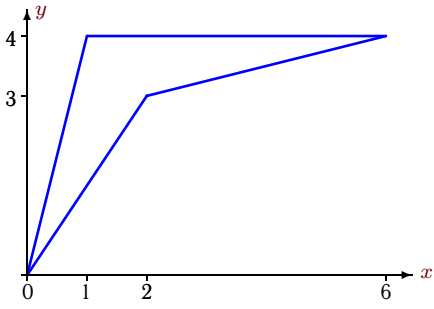
Задача S15.10.

8



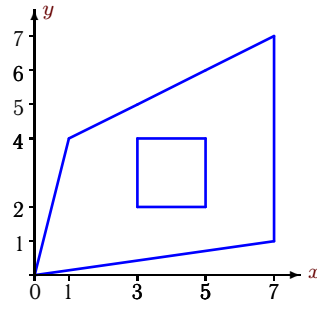
Задача S15.11.

8



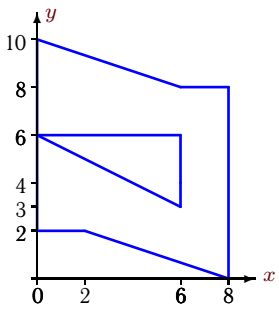
Задача S15.12.

8



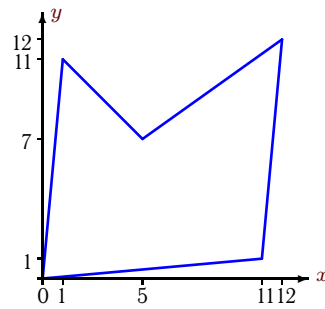
Задача S15.13.

8



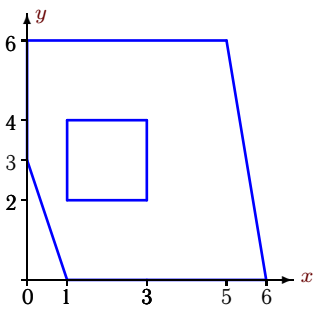
Задача S15.14.

8



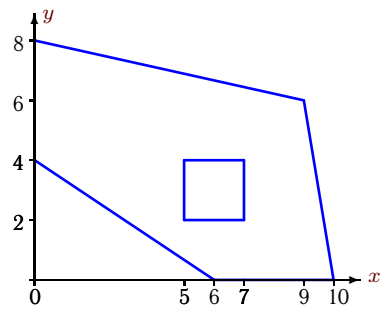
Задача S15.15.

8



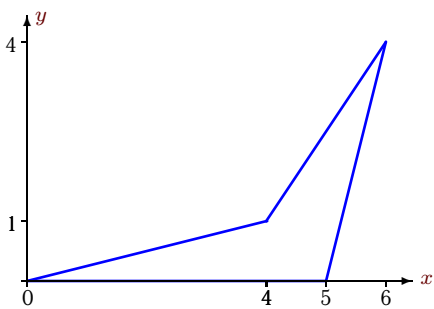
Задача S15.16.

8



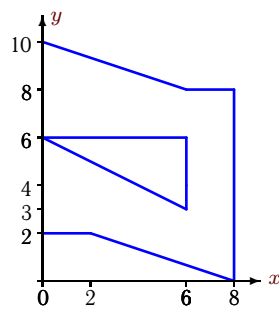
Задача S15.17.

8



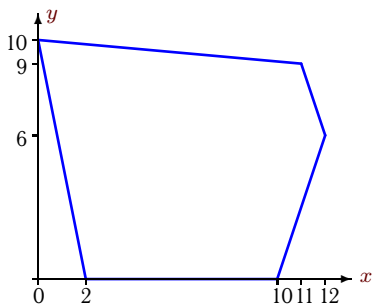
Задача S15.18.

8



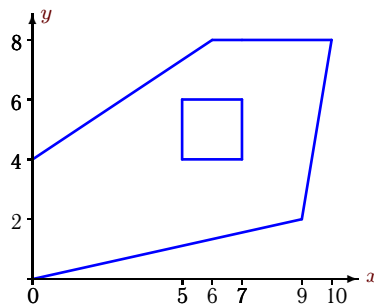
Задача S15.19.

8



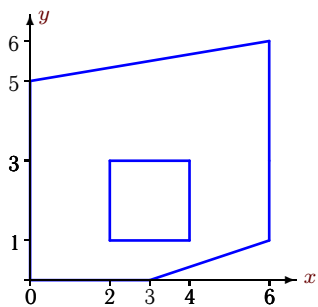
Задача S15.20.

8



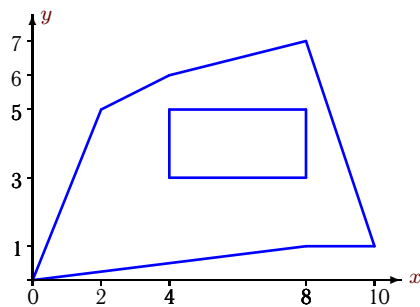
Задача S15.21.

8



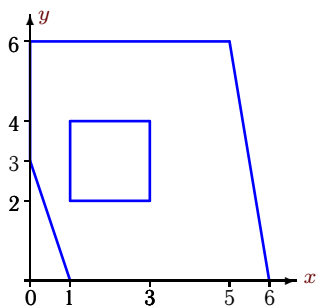
Задача S15.22.

8



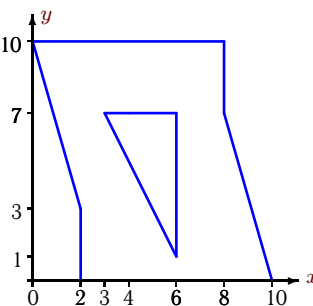
Задача S15.23.

8



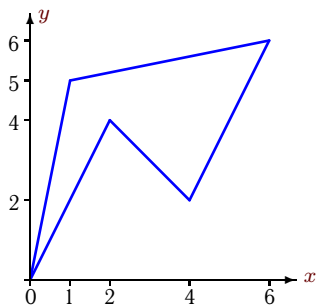
Задача S15.24.

8



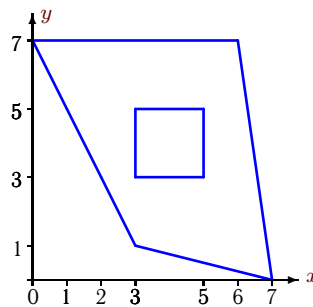
Задача S15.25.

8



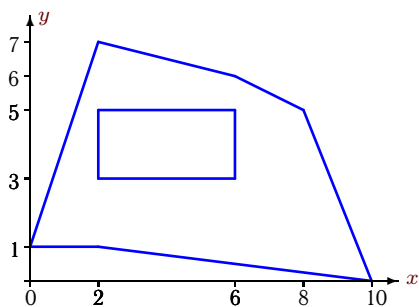
Задача S15.26.

8



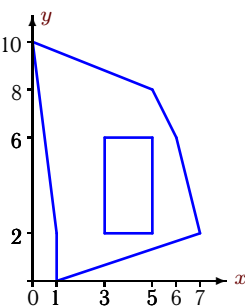
Задача S15.27.

8



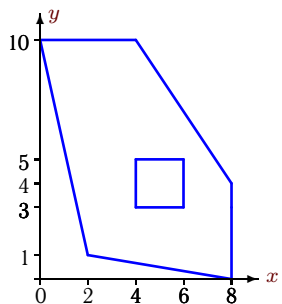
Задача S15.28.

8



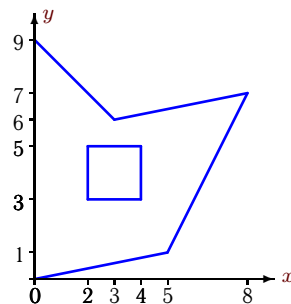
Задача S15.29.

8



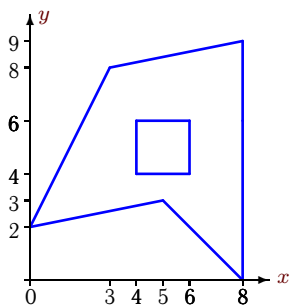
Задача S15.30.

8



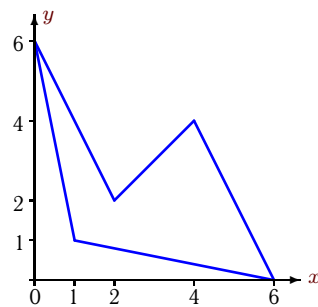
Задача S15.31.

8



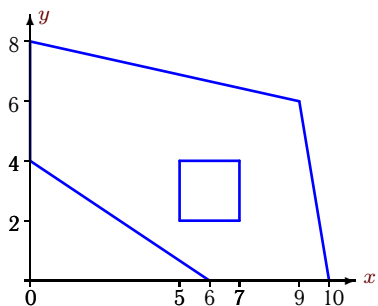
Задача S15.32.

8



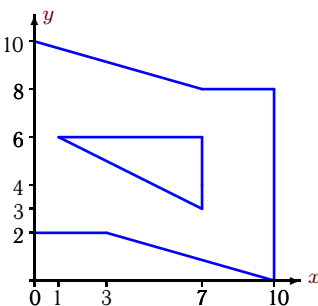
Задача S15.33.

8



Задача S15.34.

8



S15 Ответы.**Геометрические характеристики плоской фигуры**

17.07.2012

№	A	x_c	y_c
1	36.50	3.00	5.00
2	96.00	7.00	6.00
3	50.00	5.00	4.00
4	36.50	4.00	3.00
5	96.00	7.00	6.00
6	36.00	3.00	5.00
7	96.00	5.00	6.00
8	27.50	3.00	3.00
9	51.00	4.00	5.00
10	96.00	5.00	6.00
11	5.00	2.00	3.00
12	27.50	4.00	3.00
13	51.00	4.00	5.00
14	96.00	6.00	5.00
15	27.50	3.00	3.00
16	50.00	5.00	4.00
17	5.00	4.00	1.00
18	51.00	4.00	5.00
19	96.00	6.00	5.00
20	50.00	5.00	4.00
21	27.50	3.00	3.00
22	36.00	5.00	3.00
23	27.50	3.00	3.00
24	65.00	5.00	5.00
25	12.00	3.00	4.00
26	27.50	4.00	4.00
27	36.00	5.00	3.00
28	36.00	3.00	5.00
29	50.00	4.00	5.00
30	36.50	3.00	4.00
31	36.50	5.00	5.00
32	12.00	3.00	2.00
33	50.00	5.00	4.00
34	65.00	5.00	5.00

S15 файл o15s8A