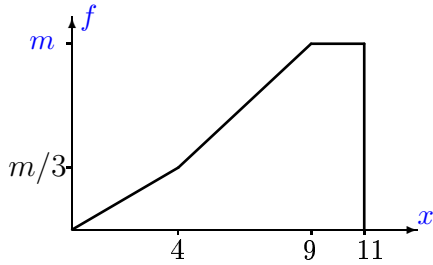


# Математическое ожидание и дисперсия непрерывной случайной величин

Найти математическое ожидание и дисперсию случайной величины плотности распределения вероятности которой задана на графике.

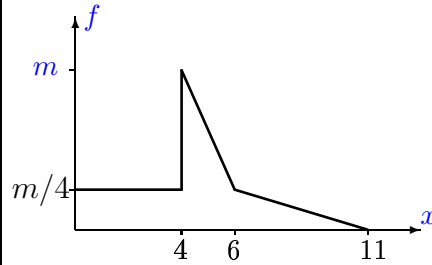
**Задача L-28.1.**

2



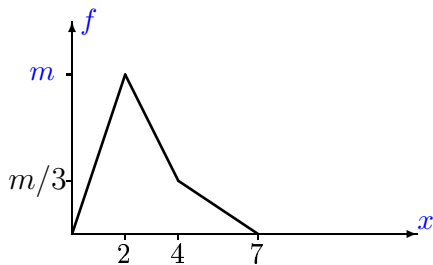
**Задача L-28.2.**

2



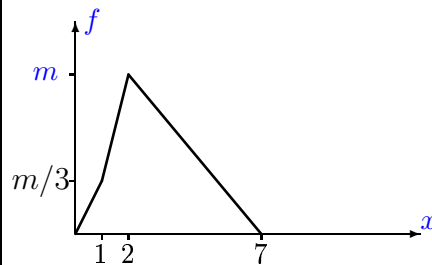
**Задача L-28.3.**

2



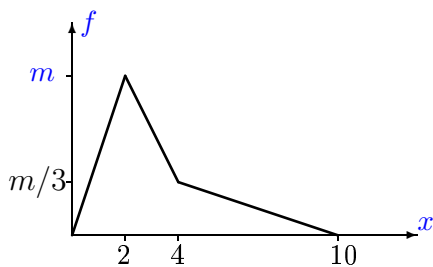
**Задача L-28.4.**

2



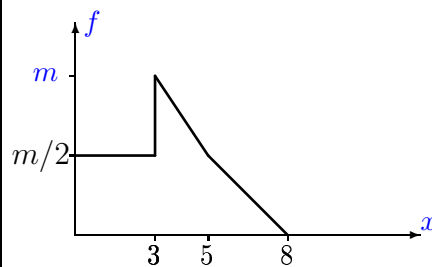
**Задача L-28.5.**

2



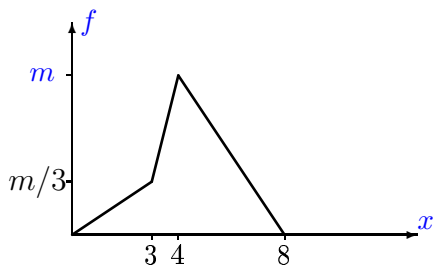
**Задача L-28.6.**

2



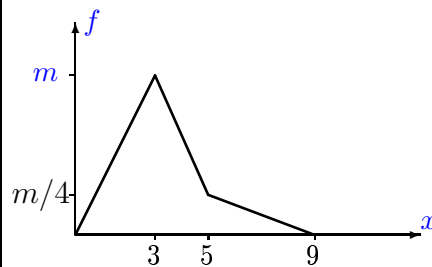
**Задача L-28.7.**

2



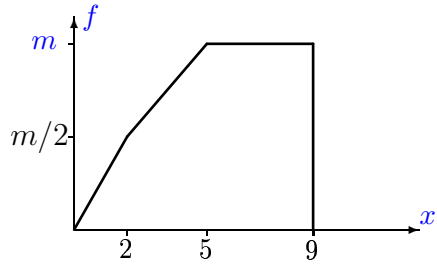
**Задача L-28.8.**

2



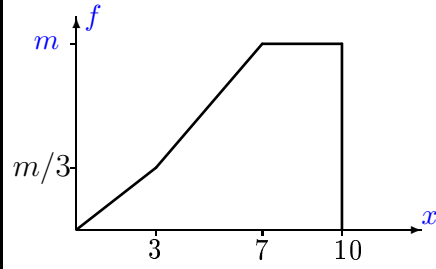
Задача L-28.9.

2



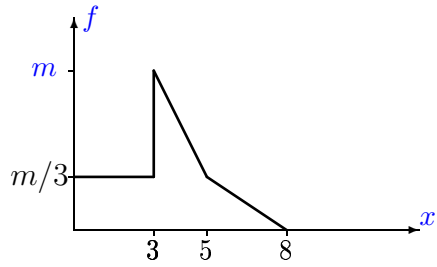
Задача L-28.10.

2



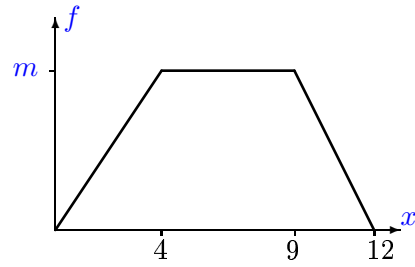
Задача L-28.11.

2



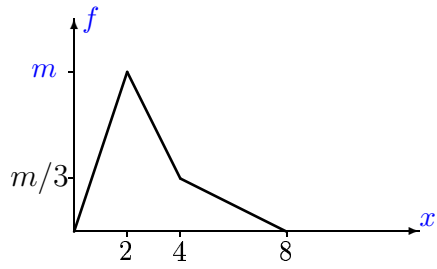
Задача L-28.12.

2



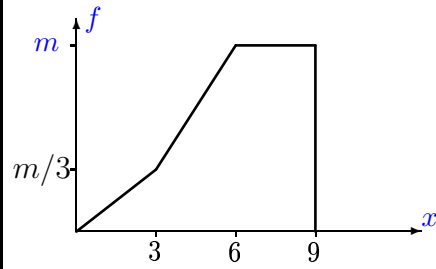
Задача L-28.13.

2



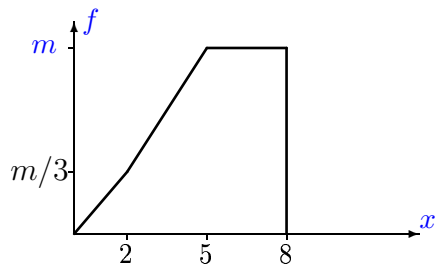
Задача L-28.14.

2



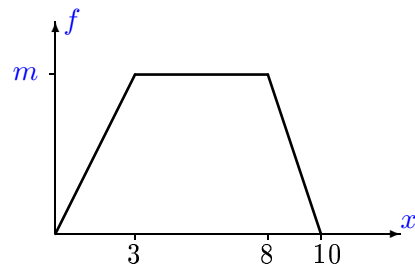
Задача L-28.15.

2



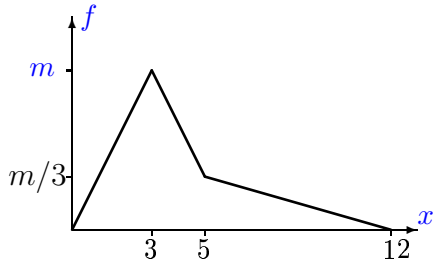
Задача L-28.16.

2



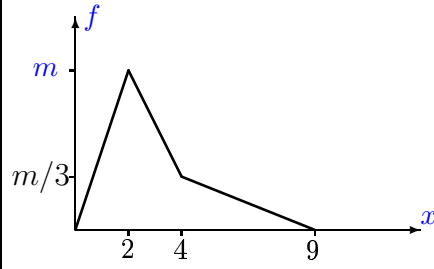
Задача L-28.17.

2



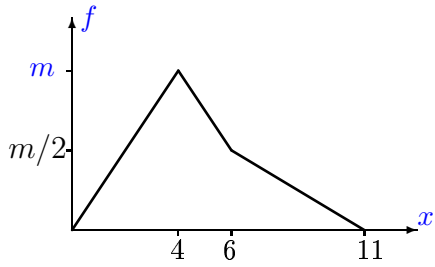
Задача L-28.18.

2



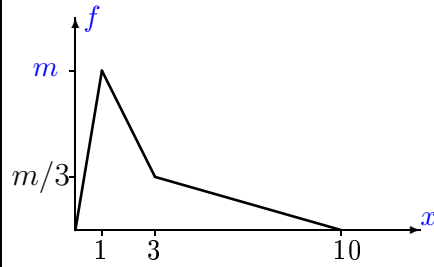
Задача L-28.19.

2



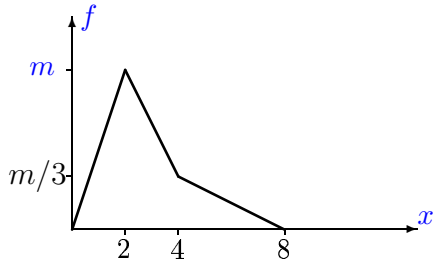
Задача L-28.20.

2



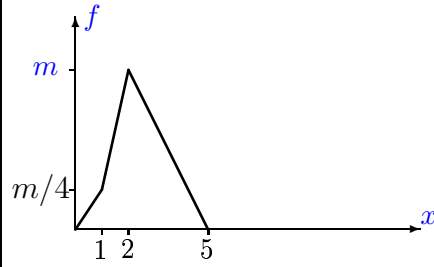
Задача L-28.21.

2



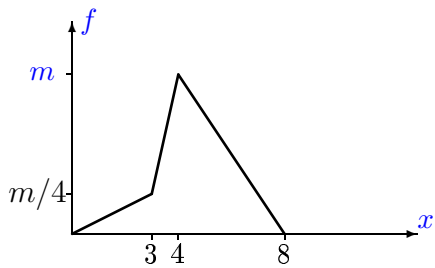
Задача L-28.22.

2



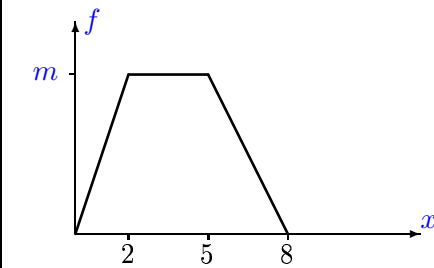
Задача L-28.23.

2



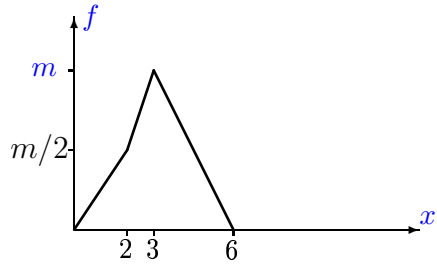
Задача L-28.24.

2



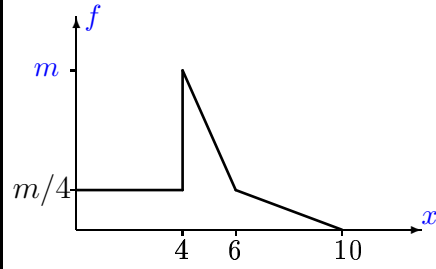
Задача L-28.25.

2



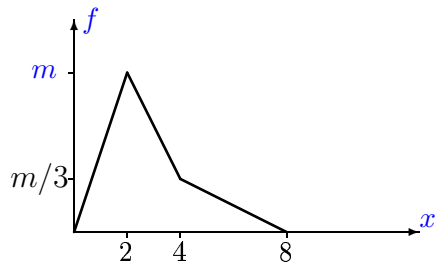
Задача L-28.26.

2



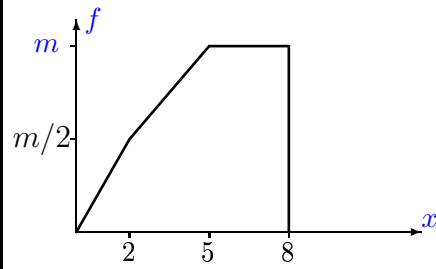
Задача L-28.27.

2



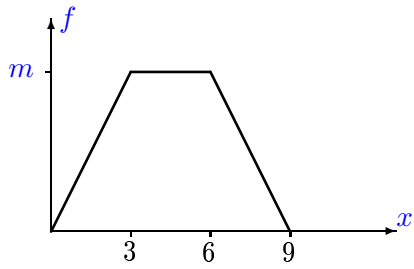
Задача L-28.28.

2



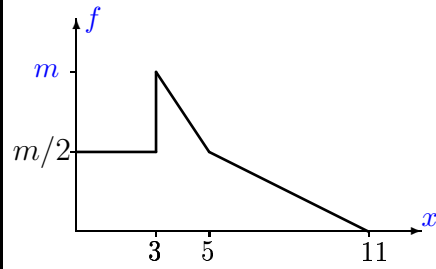
Задача L-28.29.

2



Задача L-28.30.

2



**Ответы.****Математическое ожидание и дисперсия непрерывной случайной величин**

22-Jan-16

№	$m$	$M(x)$	$D(x)$
1	0.167	7.472	6.138
2	0.348	4.449	5.284
3	0.353	2.686	1.911
4	0.300	3.100	2.057
5	0.300	3.333	4.222
6	0.267	3.356	3.418
7	0.316	4.439	2.255
8	0.308	3.359	2.769
9	0.148	5.469	4.786
10	0.162	6.604	5.100
11	0.353	3.392	3.052
12	0.118	6.216	7.061
13	0.333	2.889	2.543
14	0.182	6.000	3.955
15	0.188	5.146	3.364
16	0.133	5.222	5.228
17	0.250	4.167	5.806
18	0.316	3.105	3.313
19	0.211	4.684	4.909
20	0.333	3.000	4.833
21	0.333	2.889	2.543
22	0.444	2.481	0.935
23	0.333	4.556	2.080
24	0.182	3.788	3.061
25	0.364	3.121	1.425
26	0.364	4.242	4.487
27	0.333	2.889	2.543
28	0.174	4.942	3.729
29	0.167	4.500	3.750
30	0.222	4.130	6.094

L-28 файл о28L2A